



MACARTHUR
Strategic Waste Alliance
Camden . Campbelltown . Penrith . Wollondilly

REGIONAL WASTE STRATEGY 2023 – 2027



REGIONAL WASTE STRATEGY

2022/23 – 2026/27

Published 2023

Acknowledgements

MSWA acknowledges and extends appreciation to all contributors.

Copyright

All information, graphics and photographs are copyright of Macarthur Strategic Waste Alliance unless otherwise noted. The content is protected by Australian and International Copyright and Trademark laws.

For further information contact

Caroline Locke
Regional Waste Coordinator
Macarthur Strategic Waste Alliance



0417 274 408



caroline.locke@campbelltown.nsw.gov.au



ACKNOWLEDGEMENT OF COUNTRY

The Macarthur Strategic Waste Alliance acknowledges Aboriginal and Torres Strait Islander people as the traditional Custodians of the land. We pay our respects to all Elders past, present and emerging.

ACKNOWLEDGEMENT OF THE EPA

This project is a NSW Environment Protection Authority Waste and Sustainable Materials Strategy initiative, funded from the waste levy.

CONTENTS

ACKNOWLEDGEMENT OF COUNTRY.....	3
ACKNOWLEDGEMENT OF THE EPA.....	3
THE MACARTHUR STRATEGIC WASTE ALLIANCE.....	5
WHY WE NEED THIS STRATEGY.....	7
GUIDING PRINCIPLES	
Circular Economy.....	8
Waste Hierarchy.....	8
Net Zero Emissions.....	9
Sustainable Procurement.....	9
WHERE WE ARE TODAY & FUTURE PROJECTIONS.....	11
WHERE DO WE WANT TO GET TO.....	12
HOW ARE WE GOING TO GET THERE.....	14
ACTION PLAN (APPENDIX).....	16

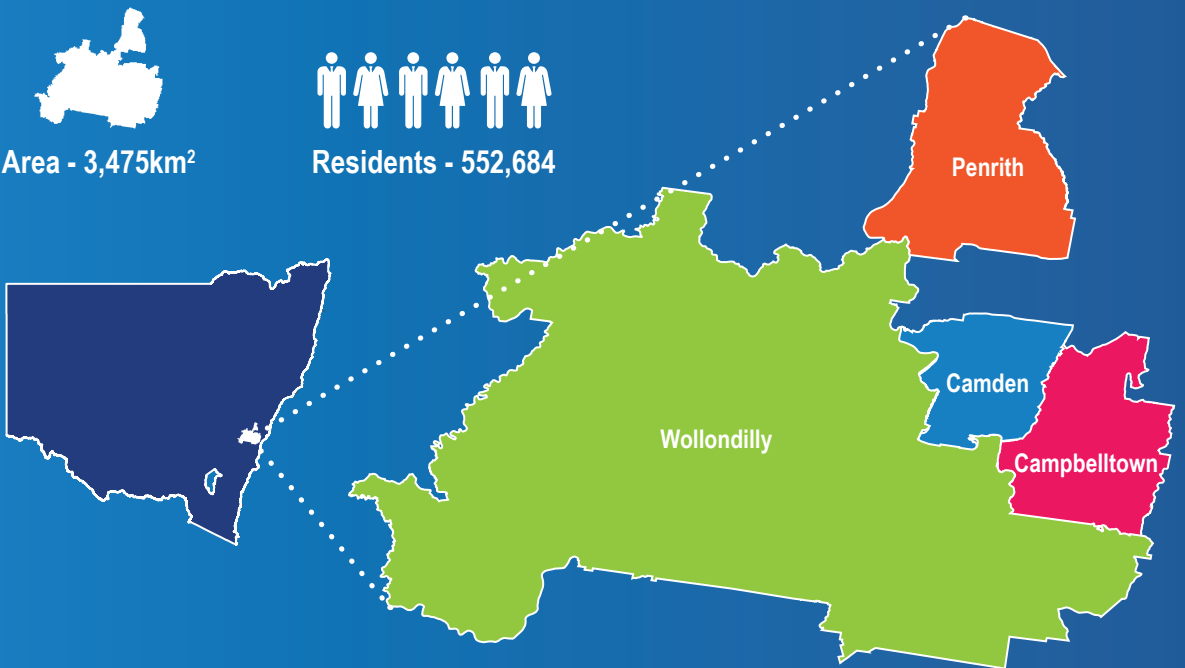


THE MACARTHUR STRATEGIC WASTE ALLIANCE

The Macarthur Strategic Waste Alliance (MSWA) was created in September 2018 to become an advocate for all member councils and to promote regional waste projects funded by the EPA.

Original member Councils consisted of Camden, Campbelltown City and Wollondilly Shire Councils. In 2022, Penrith City Council joined the MSWA. The Macarthur Strategic Waste Alliance is a successful collaborative working group of its four participating Councils.

Other external collaboration include relationships between Regional Waste groups and their member Councils, The Environment Protection Authority and Local Government NSW. The targets set in the WaSM also provide the opportunity for advocacy and collaboration with business and Commercial and Industrial (C&I) sectors within the region.



THE MACARTHUR STRATEGIC WASTE ALLIANCE

MSWA has executed key projects since 2018, including:



Regional Projects such as Garage Sale Trail has included over 8000 participants.



Recycling lid sticker.



Operation 40 a litter reduction project resulted in the number of items littered reduced by a regional average of 21% and the volume of litter reduced by 67%.



Regional information package - magnet, moving checklist.



Regional Household Battery Collection. Coordination of Waste Facility tours has provided the opportunity for staff to experience and understand waste technologies.



FOGO Feasibility Study, Community Consultation, Gap Analysis, Draft Implementation Plan and FOGO in MUD's education program, on behalf of Campbelltown, Camden, and Wollondilly Councils.



CRC education and promotional project.



Education programs on Worm Farming, Composting, Plastic Reduction, Council Waste Services, Recycling, Littering, Food waste avoidance and Illegal Dumping to over 4000 participants.



Regional Textile Diversion day and staff clothing swap.

WHY WE NEED THIS STRATEGY

NSW creates one-third of the 74+ million tonnes of waste generated across Australia each year. By 2041, this figure is forecast to increase from 21 million tonnes to nearly 37 million tonnes. Despite recovering about two-thirds of the material generated, there are looming capacity constraints to responsibly dispose of waste materials.



This Strategy is the regions response to the WaSM and it will assist the region in finding solutions for the challenges it faces, as well as contributing to the targets set out in the WaSM.

GUIDING PRINCIPLES

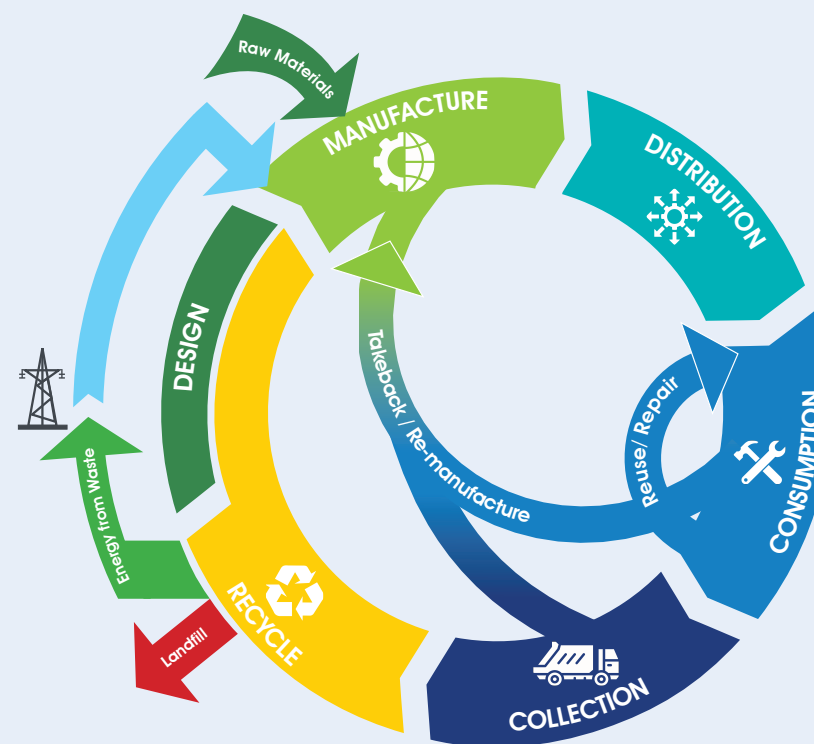
WASTE HIERARCHY

The Waste Management Hierarchy is a principle and concept which lists waste management options in order of preference according to their sustainability and environmental impacts. Options, which achieve outcomes higher up the Waste Hierarchy, are preferred over those located further down the Hierarchy.



CIRCULAR ECONOMY

NSW is transitioning to a circular economy over the next 20 years. A circular economy aims to 'close the loop on waste' by minimising what we throw away and using and reusing our resources efficiently, making them as productive as possible. It is an alternative to the traditional linear economy (take, make, use, dispose), which refers to taking resources, making goods that are then bought and used to then be disposed of as waste.





GUIDING PRINCIPLES

NET ZERO EMISSIONS

Climate change is affecting communities across Australia and across the globe.

The NSW Government's Net Zero Plan Stage 1: 2020-2030 is the foundation for the State's action on climate change and its goal to reach net zero emissions by 2050. By reducing emissions, local councils can help to increase the resilience of their communities and act as a catalyst for NSW to meet its net zero emissions goals.

SUSTAINABLE PROCUREMENT

Sustainable procurement takes into consideration the economic, environmental, social and governance impacts of any purchase with the four factors referred to as the quadruple bottom line and relate to a total purchase cost, and not just the upfront dollar expense (LGNSW, Sustainable Procurement Guide).

Approaching procurement sustainably allows councils and the waste management and resource recovery industry to meet economic, environmental, social and governance requirements, while improving opportunities for a more circular system across the entire supply chain.



WHERE WE ARE TODAY & FUTURE PROJECTIONS

POPULATION

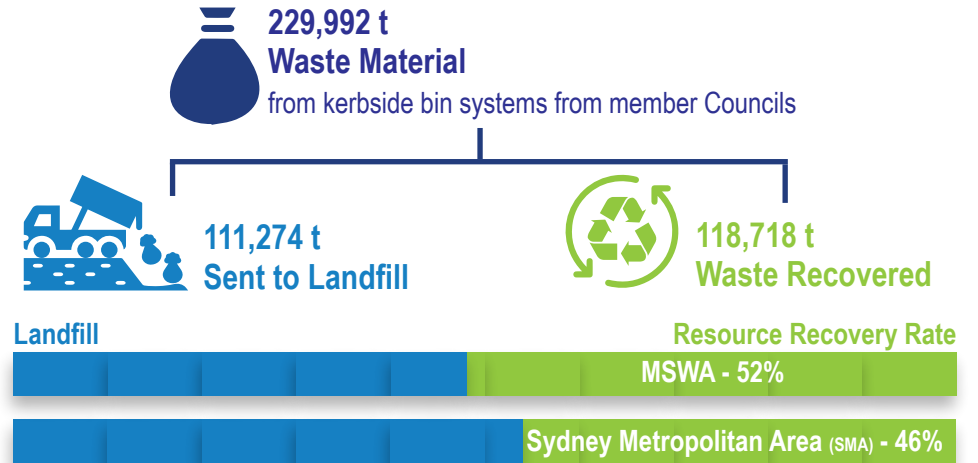


Camden and Wollondilly expected to experience the greatest levels of growth.

Council	2021	2041	Change	Annual %
Camden	107,908	197,735	89,827	3.07
Campbelltown	174,662	229,301	54,639	1.37
Penrith	216,075	270,477	54,402	1.13
Wollondilly	54,039	90,356	36,317	2.60
Total	552,684	787,869	235,185	2.13
NSW Total	8,166,757	9,872,934	1,706,176	0.95

PERFORMANCE

2021 Performance



	Red-lidded Bin	Yellow-lidded Bin	Green-lidded Bin	MSWA Total
Tonnes	109,138	42,573	78,281	229,992
Regional Average kg/hh/wk	10.96	4.32	8.78	23.79
SMA Average kg/hh/wk	12.40	3.69	5.80	21.89

2041 Forecast Performance

By 2041, the total amount of household material generated from the kerbside bin systems across the region is forecast to increase from **229,992 to 565,404** tonnes. Of which an average of **59%** will be recovered for recycling or reprocessing and the remaining **41%** will be sent to landfill. This figure is based on current service provisions, and forecast waste generation rates.

WHERE DO WE WANT TO GET TO?



VISION

“A collaborative region that promotes waste as a resource and leads the way in educating the community on waste avoidance to achieve sustainable outcomes”

In working towards this vision, the region will contribute to the targets set out in WaSM

2025 TARGETS



Phase out problematic and unnecessary plastics by 2025



Plastic litter reduction target of **30%** by 2025



Eliminate problematic and single use plastics by 2025

2030 TARGETS



Reduce total waste generated by **10%** per person by 2030



Introduce a new overall litter reduction target of **60%** by 2030



Net Zero emissions from organics to landfill by 2030



80% average recovery rate from all waste streams by 2030



Triple the plastics recycling rate by 2030



Halve the amount of organic waste sent to landfill by 2030

To achieve the WaSM targets of halving food waste to landfill and achieving net zero emissions from organics in landfill by 2030, the government will require the separate collection of:

- Food and garden organics from all NSW households by 2030; and
- Food waste from businesses that generate the highest volumes, including large supermarkets and hospitality businesses, by 2025



HOW ARE WE GOING TO GET THERE?

The Strategy and supporting actions are guided by a set of Themes and Priorities, which align with WaSM themes and priorities.



RECOVER RESOURCES

Providing improved resource recovery solutions through engagement and innovation.



PROTECT THE ENVIRONMENT

Working with partners to manage litter and illegal dumping across the region to reduce its impact on the environment.



STRATEGIC COLLABORATION

Working collaboratively with members of the MSWA and other partners to improve and deliver innovative waste services.



REDUCE OR REUSE

Providing better practice waste management that focuses on avoidance and reuse through education and engagement.



PLANNING FOR THE FUTURE

Shaping waste services and waste infrastructure to be flexible and meet the changing needs for current and future communities.

STRATEGY THEMES

HOW ARE WE GOING TO GET THERE?


To meet its Strategic Vision, the MSWA will focus on projects, programs and initiatives that achieve its Strategic Objectives, whilst aligning with the Themes and Priority Areas identified in the **WaSM**. In addition to the WaSM Themes of avoid, reduce, recover resources, protect the environment and strategic collaboration, the MSWA will also focus on the delivery of projects, programs and initiatives that focus on planning for future needs.


THEMES					STRATEGIC OBJECTIVES	WaSM PRIORITY AREAS		
Reduce or Reuse	Recover Resources	Protect the Environment	Strategic Collaboration	Planning for the Future	DESCRIPTIONS	Meeting our future infrastructure and service needs	Reducing carbon emissions through better waste and materials management	Building on our work to protect the environment and human health from waste pollution
✓	✓	✓	✓	✓	COMMUNICATION, EDUCATION AND COLLABORATION Continue to advocate and foster effective communication, education and collaboration with all relevant stakeholders	✓	✓	✓
	✓		✓		ENABLE RESOURCE RECOVERY	✓	✓	✓
	✓		✓	✓	DISASTER RECOVERY AND RESILIENCE Facilitate regional collaboration to plan for, guide the response to and manage waste from disasters to improve disaster resilience	✓		✓
✓	✓	✓	✓		PREVENT ILLEGAL DUMPING Engage the community to correctly dispose of waste to prevent Illegal Dumping across the region	✓		✓
✓	✓		✓		DIVERT ORGANICS FROM LANDFILL Promote the diversion of organics waste from landfill	✓	✓	
✓	✓		✓	✓	PLANNING FOR THE FUTURE Support Councils to include better practice waste management planning in new and existing developments		✓	✓
✓	✓	✓	✓		MANAGING LITTER Engage the community to correctly dispose of or recycle waste to prevent littering across the region		✓	✓
	✓		✓	✓	SUPPORT THE CIRCULAR ECONOMY Support the NSW government to meet its targets through better waste and materials management and support of innovative circular solutions to regional waste management		✓	✓

ACTION PLAN (APPENDIX)


KEY

Year 1	2023/24 (high priority)	Year 4 to 5	2025/26 – 2026/27 (low priority)	MC	Member Councils	C&I	Commercial and Industrial	CDS	Container Deposit Scheme
Year 2 to 3	2024/25 (medium priority)	RWC	Regional Waste Coordinator	LC	Lead Council	C&D	Construction and Demolition	RVM	Reverse Vending Machine

	Planning for the Future	Time-frame for Delivery			Responsibility
	Action	Year 1	Year 2-3	Year 4-5	
	Analyse the impact of population growth and changes in housing density on waste services				RWC & MC
	Determine the broader impacts of planning proposals and instruments, such as the Airport Metropolis and Greater Macarthur Plan, on the region's waste management				RWC & MC
	Facilitate training and networking activities to align waste management planning controls and better practice guides				RWC & MC


	Enable Resource Recovery	Time-frame for Delivery			Responsibility
	Action	Year 1	Year 2-3	Year 4-5	
	Explore options for establishing a permanent or pop-up regional reuse centre for bulky waste items				RWC
	Research and document existing and emerging resource recovery options within the region for reference and promotion (NEW)				RWC
	Investigate regional solutions for the recovery and/or recycling of existing and emerging problem wastes				RWC
	Coordinate the education programs for the region's Community Recycling Centres				RWC & MC
	Engage with peak bodies within the C&I and C&D streams in relation to regional reuse and recovery options				RWC


ACTION PLAN (APPENDIX)

	Divert Organics from Landfill	Time-frame for Delivery			Responsibility
	Action	Year 1	Year 2-3	Year 4-5	
	Action the regional FOGO implementation plan to develop, coordinate and deliver the introduction of FOGO services across member councils by 2030				RWC & MC
	Investigate opportunities for food waste prevention programs with the commercial sector				RWC & MC
	Investigate opportunities for food waste management in multi dwelling housing and residential flat buildings				RWC & LC
	Coordinate delivery of education programs to increase residents awareness of FOGO and its implementation				RWC & MC

	Support the Circular Economy	Time-frame for Delivery			Responsibility
	Action	Year 1	Year 2-3	Year 4-5	
	Provide and collate data to enable regional analysis of performance				RWC & MC
	Collate each Council's Sustainable Procurement Guidelines and create a sustainable procurement database/library				RWC & MC
	Actively promote funding opportunities available to businesses within the region to encourage circular solutions				RWC
	Continue to identify future regional procurement opportunities and showcase examples of circular economy in practice to member Councils to encourage and normalise circular economy practice				RWC & MC
	Facilitate the regional introduction of zero waste council events through the development of a Regional Towards Zero Waste Event Guideline and consider regional procurement of zero waste event services				RWC & MC


ACTION PLAN (APPENDIX)

	Prevent Illegal Dumping	Time-frame for Delivery			Responsibility
	Action	Year 1	Year 2-3	Year 4-5	
	Actively engage Real Estate Agents to assist with providing tenants with waste services education				RWC
	Continue to facilitate quarterly Regional Illegal Dumping Working Group meetings and identify and promote opportunities for collaboration				RWC
	Promote Community Recycling Centre's for disposing of household quantities of problem wastes				RWC
	Collaborate with Councils to create education and promotional materials for the community on the correct donation requirements for Charity Stores and clothing bins				RWC & MC

	Managing Litter	Time-frame for Delivery			Responsibility
	Action	Year 1	Year 2-3	Year 4-5	
	Investigate opportunities to reduce litter and increase resource recovery at sports fields, parks and recreation areas across the region, including gathering the evidence base to target locations with actions and conducting trials				RWC
	Collaborate with the Councils to assess and assist with the provision of adequate services, infrastructure and programs to manage litter				RWC & MC
	Investigate and implement opportunities to manage cigarette butt litter in public places				RWC
	Educate and Promote participation in the CDS scheme. Advocate for more refund points including RVMs requested by member Councils				RWC & LC

	Disaster Recovery & Resilience	Time-frame for Delivery			Responsibility
	Action	Year 1	Year 2-3	Year 4-5	
	Facilitate workshops to share learnings from natural disasters				RWC & MC
	Create a Regional Working Group to collate data for reference				RWC & MC
	Develop a Regional Disaster Waste Management and Resilience Plan				RWC & LC

ACTION PLAN (APPENDIX)

	Communication, Education & Collaboration	Time-frame for Delivery			Responsibility
	Action	Year 1	Year 2-3	Year 4-5	
	Facilitate Regional Waste Working Group meetings with member councils				RWC
	Develop a regional brand and a communications plan				RWC & MC
	Continue to meet with and engage with neighbouring councils, Regions of Councils (ROCs), Joint Organisations (JOs), LGNSW and the NSW EPA				RWC
	Continue to attend and participate in relevant project/program working groups, such as Waste Management and Resource Recovery Association of Australia working groups				RWC
	Keep abreast of policy and legislative changes that will impact the region from a waste perspective and advocate on behalf of the member councils where appropriate				RWC
	Collect and collate Council waste publications into a Regional Information library				RWC
	Analyse Regional Waste data to ensure accuracy for reporting purposes				RWC
	Promote and coordinate the delivery of training and education programs to facilitate development of staff				RWC
	Coordinate the delivery of waste facility tours for staff and/or residents				RWC
	Design and Coordinate the distribution of a regional waste information package				RWC & MC





MACARTHUR Strategic Waste Alliance

For further information contact



c/-
Campbelltown City Council
91 Queen street
Campbelltown NSW 2560

Caroline Locke
Regional Waste Coordinator
Macarthur Strategic Waste Alliance



0417 274 408



caroline.locke@campbelltown.nsw.gov.au

