



## E-Waste recycling at Bargo is Free

Residents are able to recycle their e-waste at Bargo Waste Management Centre for free.

Items which can be recycled include:

- CRT and LCD Televisions Monitors
- Computers
- Computer products
- Laptops, notebooks, palmtops and tablets
- Computer monitors
- Parts for personal computers eg. internal hard drives, motherboards, cards, internal power supplies, CPUs
- DVD and CD drives
- Computer peripherals eg. mice, keyboards, joysticks, game-pads, scanners, web cameras
- Printers eg. ink-jet, dot matrix, laser and multi-functional devices



For more information about the Bargo Waste Management Centre, please call **0419 490 599** or visit [www.wollondilly.nsw.gov.au](http://www.wollondilly.nsw.gov.au)

## Domestic

No eftpos facilities available. Cash or account only. Domestic charges apply to material from Wollondilly Shire residential properties.

Domestic Waste	GST incl.
up to 0.25m <sup>3</sup>	\$13.00
up to 0.5m <sup>3</sup>	\$26.00
up to 0.75m <sup>3</sup>	\$39.00
1m <sup>3</sup>	\$52.00

Domestic Garden Organics (Tree stumps exceeding 30cm in diameter are not accepted)	
up to 0.25m <sup>3</sup> (240L wheelie bin)	\$6.50
up to 0.5m <sup>3</sup>	\$13.00
up to 0.75m <sup>3</sup>	\$19.50
1m <sup>3</sup>	\$26.00

Domestic Construction and Demolition Material	
Concrete up to 0.25m <sup>3</sup>	\$9.30
Concrete up to 0.50m <sup>3</sup>	\$18.60
Concrete up to 0.75m <sup>3</sup>	\$27.90
Concrete per m <sup>3</sup>	\$37.20
Brick/Pavers/Tiles up to 0.25m <sup>3</sup>	\$9.30
Brick/Pavers/Tiles up to 0.50m <sup>3</sup>	\$18.60
Brick/Pavers/Tiles up to 0.75m <sup>3</sup>	\$27.90
Brick/Pavers/Tiles per m <sup>3</sup>	\$37.20
Clean timber for processing up to 0.25m <sup>3</sup>	\$13.00
Clean timber for processing up to 0.50m <sup>3</sup>	\$26.00
Clean timber for processing up to 0.75m <sup>3</sup>	\$39.00
Clean timber per m <sup>3</sup>	\$52.00
Non sorted (to go to landfill) up to 0.25m <sup>3</sup>	\$35.00
Non sorted (to go to landfill) up to 0.50m <sup>3</sup>	\$69.50
Non sorted (to go to landfill) up to 0.75m <sup>3</sup>	\$104.00
Non sorted (to go to landfill) per m <sup>3</sup>	\$138.50

Used Tyres (per tyre) Residential ONLY	
Passenger Car	\$12.00
Light commercial	\$12.50
4 wheel Drive	\$12.50
Truck	\$23.50

Soil /Clay	
Virgin Excavated Natural Material VENM – Clay/soil per m <sup>3</sup>	\$245.20
Non Virgin Excavated Natural Virgin Material per m <sup>3</sup>	\$245.20

Recycling	
Mattresses	\$26.00
Computers, TV's, small appliances – General E-Waste	FREE
Gas Bottles	\$12.50

## Commercial

Commercial fees and charges apply to material from sources other than residential properties. These include businesses, government agencies, charities and not for profit organisations.

Commercial Waste	GST incl.
up to 0.25m <sup>3</sup>	\$25.90
up to 0.5m <sup>3</sup>	\$51.80
up to 0.75m <sup>3</sup>	\$77.70
1m <sup>3</sup>	\$103.60

Commercial Garden Organics (Tree stumps exceeding 30cm in diameter are not accepted)	
up to 0.25m <sup>3</sup>	\$13.00
up to 0.5m <sup>3</sup>	\$26.00
up to 0.75m <sup>3</sup>	\$39.00
1m <sup>3</sup>	\$52.00

Commercial Construction and Demolition Material	
Concrete up to 0.25m <sup>3</sup>	\$18.60
Concrete up to 0.50m <sup>3</sup>	\$37.20
Concrete up to 0.75m <sup>3</sup>	\$55.80
Concrete per m <sup>3</sup>	\$74.40
Brick/Pavers/Tiles up to 0.25m <sup>3</sup>	\$18.60
Brick/Pavers/Tiles up to 0.50m <sup>3</sup>	\$37.20
Brick/Pavers/Tiles up to 0.75m <sup>3</sup>	\$55.80
Brick/Pavers/Tiles per m <sup>3</sup>	\$74.40
Clean timber for processing up to 0.25m <sup>3</sup>	\$13.00
Clean timber for processing up to 0.50m <sup>3</sup>	\$26.00
Clean timber for processing up to 0.75m <sup>3</sup>	\$39.00
Clean timber per m <sup>3</sup>	\$52.00
Non sorted (to go to landfill) up to 0.25m <sup>3</sup>	\$69.50
Non sorted (to go to landfill) up to 0.50m <sup>3</sup>	\$139.00
Non sorted (to go to landfill) up to 0.75m <sup>3</sup>	\$208.50
Non sorted (to go to landfill) per m <sup>3</sup>	\$278.00

Soil /Clay	
Virgin Excavated Natural Material VENM – Clay/soil per m <sup>3</sup>	\$245.20
Non Virgin Excavated Natural Virgin Material per m <sup>3</sup>	\$245.20

Waste generated outside of the Wollondilly Shire can not be lawfully transported to, or deposited, at this facility. Proof you reside in, and/or that the waste is from the Wollondilly Shire must be shown to the site attendant. Maximum penalty exceeds \$115,000 for individuals and \$240,000 for corporations.

### WARNING

Hazards may exist on this landfill site.  
Persons enter site at own risk



# BARGO WASTE MANAGEMENT CENTRE FEES AND CHARGES 2017/18



**CASH OR ACCOUNT ONLY.  
NO EFTPOS.**

Anthony Road, Bargo  
Phone: **0419 490 599**

Open 7 Days\* – 8.30am to 4.15pm

\*Closed Christmas Day and Good Friday

The Bargo Waste Management Centre is available for the receipt of waste that is free of putrescible material, dead animals and food scraps.

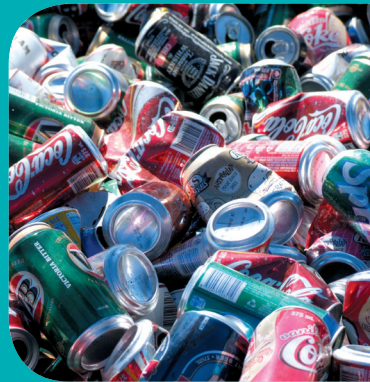
## Sort and Save

Wollondilly Shire residents are encouraged to sort their waste as they pack it into their vehicles ready for when they arrive at the Waste Management Centre.

This will save you time and money as you will be able to unload the different materials for recycling or reprocessing at the different stockpiles, without having to dig through your waste when you get there.

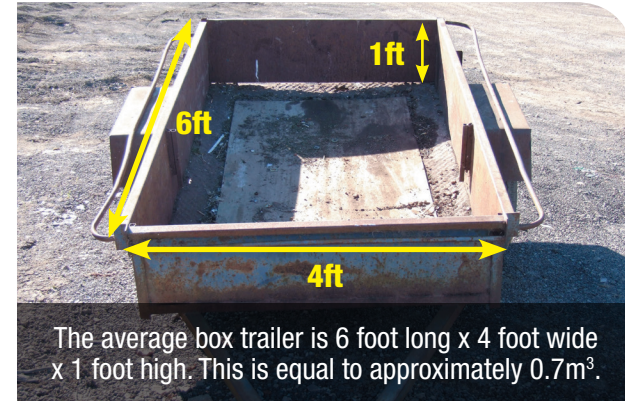
Remember, some items are free, so not only will you reduce the amount of waste you send to landfill, you can also save money at the same time!

The fees and charges at Bargo Waste Management Centre are based on the different stockpiles, so you can work out how you need to load your waste to save money.



## How are the fees and charges applied?

The Bargo Waste Management Centre doesn't have a weighbridge, so they calculate the charges based on volume. The rates are calculated based on a cubic metre (m<sup>3</sup>). 1m<sup>3</sup> is equal to 1 metre x 1 metre x 1 metre.



The charges are calculated up to the nearest 0.25m<sup>3</sup> for waste and garden organics, and to the nearest 0.25m<sup>3</sup>, 0.50m<sup>3</sup>, 0.75m<sup>3</sup> and per m<sup>3</sup> for construction and demolition material accepted for reprocessing.

The State Government Section 88 Waste and Environment Levy is based on vehicle type and is levied as part of disposal costs.

**Fees and charges for domestic and commercial customers are listed over the page.**

## Payment Options

Payment must be made at the time of disposal, unless an alternative arrangement has been approved by Wollondilly Shire Council.

Cheques are not accepted at this facility. Account application forms can be obtained from the site attendant.

Please note: Account customers will be subject to approval by Wollondilly Shire Council. Accounts will only be considered for disposal costs exceeding \$500 per annum. A monthly account keeping fee of \$11.35 applies and is payable whilst the account is active. EFTPOS facilities are not available at the Bargo Waste Management Centre.

## Free Mulch

Residents can pick up mulch free of charge from the Bargo Waste Management Centre.

Quantities of processed organics stored onsite may vary, so it is best to see how much is available by calling 0419 490 599 to avoid disappointment.



## Delivery of Mulch

Delivery of bulk loads of processed organics can be organised through the site attendant. Delivery costs are at the discretion of the contractor delivering the material.

## Resource Recovery Area

To help reduce the amount of waste we put into landfill, the site attendant has set up an undercover 'Resource Recovery Area'.

Items that are selected by the contractor for the 'Resource Recovery Area' will not attract a disposal cost, as they will be put on display for sale.

Materials selected for the 'Resource Recovery Area' are at the discretion of the site attendant, as are the sale prices for purchasing items on display.

Please see the site attendant for assistance. Closed footwear must be worn on site to reduce the risk of injury.

## Free Recycling

The following items are accepted free of charge. However, they must be sorted and placed in the appropriate container or stockpile as directed by the site attendant.

Normal waste disposal charges will apply for any unsorted material or items that are not placed in their designated area.



Scrap Metal



Glass Bottles and Jars  
(colours must be kept separate)



Paper and Cardboard



Milk and Juice Cartons



Plastic Containers



Aluminium Cans



Motor Oil



Car Batteries