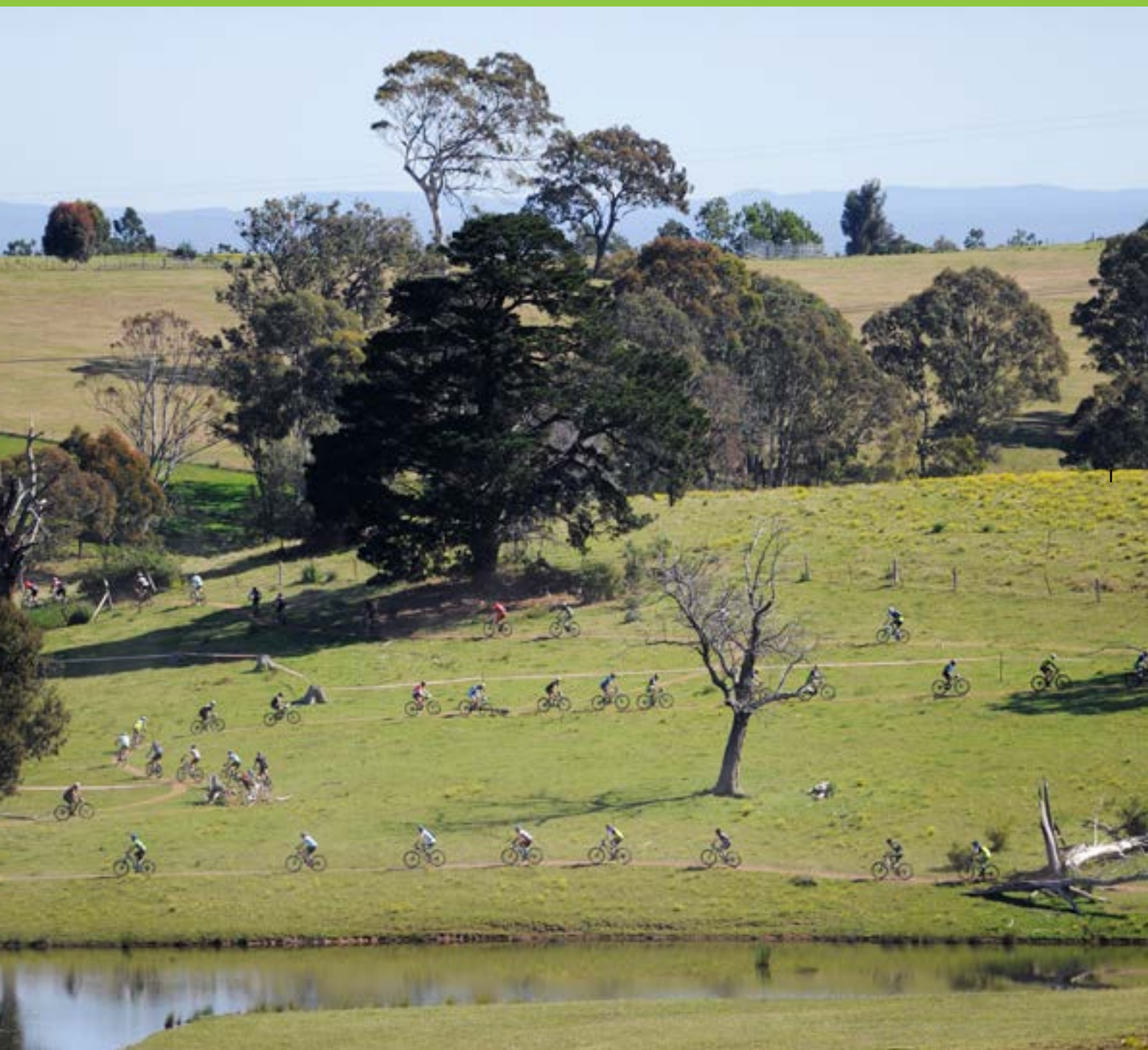


# State and Federal Issues Paper 2016







# advocacy.

**“Never doubt that a small group of thoughtful citizens can change the world. Indeed, it is the only thing that ever has”**

Margaret Mead Cultural Anthropologist 1901-1978

The Wollondilly Federal/State Issues Paper advocates for key issues that impact upon the Wollondilly community not under the direct control of Council.

### **What is Advocacy?**

To stand beside, support and speak out on behalf of our communities, so their voice is heard and their views are genuinely considered when decisions are being made about their lives

## **Our Aim is to**

- ✓ Maximise opportunities for our Community
- ✓ Explore choices and options
- ✓ Have appropriate access to information and services.
- ✓ Promote rights and responsibilities.
- ✓ Be responsive and oriented towards outcomes for our community not under the direct control of Council
- ✓ Challenge stereotypes and stigma



advocate for

# Wilton Junction



## Premier's Priorities:

- ✓ Creating jobs
- ✓ Building infrastructure
- ✓ Reducing domestic violence
- ✓ Tackling childhood obesity
- ✓ Protecting our kids
- ✓ Faster housing approvals

## State Priorities:

- ✓ Increasing housing supply
- ✓ Improving reliability of public transport services
- ✓ Stable or falling reported crime rates

# We want Wilton Junction to be a vibrant, connected & smart community.



---

**Implementation of High Speed Rail with a station near Wilton**



---

**Adequate funding for development contributions**



---

**Healthy communities framework embedded in planning for new communities**



---

**Coexistence between urban development and underground coal mining**



advocate for

# PERI URBAN

and Growth Management issues

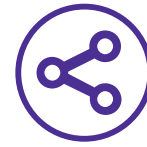
6

## Premier's Priorities:

- ✓ Faster housing approvals
- ✓ Improving government services
- ✓ Keeping our environment clean

## State Priorities:

- ✓ Halving the time taken to assess planning applications
- ✓ Increasing housing supply



# We want Wollondilly to be acknowledged as a centre for excellence in PeriUrban solutions

Innovative co-existence solutions between environmental, agricultural and urban activities



**Endorsement of Council's Growth Management Strategy**



**Acknowledgement of the PeriUrban area.**

Classification of PeriUrban areas as a unique category in District Plans



**Innovative policy and consent conditions in a PeriUrban area**



**Sound planning controls and incentives -**

For the retention of agriculture/food security and the protection of natural habitats, air and water quality.



**Waste management improvements and illegal dumping solutions**



**Bargo/Nepean National Park**





advocate for

# Infrastructure

**We want safe, maintained and effective infrastructure and transport options that are accessible to our communities.**

**Premier's Priorities:**

- ✓ Creating Jobs
- ✓ Building Infrastructure

**State Priorities:**

- ✓ Peak travel on key road routes is on time
- ✓ Reducing road fatalities
- ✓ Reliability of public transport services





---

**Sound infrastructure planning for Silverdale and Warragamba and a social procurement strategy in the delivery of the 2nd Sydney Airport**



---

**Movement and connectivity around the Shire and into bordering areas including the certainty of the route of the M9**



---

**Inclusion in the Resources for Regions program**



---

**Appropriate funding to address asset management requirements**



---

**Balancing provision of needs for release areas with providing facilities and infrastructure for Wollondilly's 17 rural villages**



---

**Appin Road improvements  
Picton and Appin By-passes**



---

**Completion of the Maldon-Domabarton rail line**



---

**Increase passenger capacity and rail services and electrification of the rail services in our Shire**



---

**Regional All Abilities playground in Wollondilly**

advocate for

# Resilient Stronger Communities

## Premier's Priorities:

- ✓ Creating jobs
- ✓ Building infrastructure
- ✓ Reducing domestic violence
- ✓ Improving service levels in hospitals
- ✓ Tackling childhood obesity
- ✓ Improving education results
- ✓ Reducing youth homelessness
- ✓ Improving Government Services

## State Priorities:

- ✓ Making NSW the easiest state to start business
- ✓ People completing apprenticeships and traineeships
- ✓ Households successfully transitioning out of social housing
- ✓ On-time admissions for planned surgery
- ✓ Government transactions via digital channels
- ✓ Reducing road fatalities
- ✓ Reliability of public transport services

Appin Township  
Photo Credit:  
Adam Hollingworth WATER NSW





---

**Innovative approaches to tertiary education**

# We want to provide sound lifelong opportunities to our communities within our Shire



---

**Innovative health provision – Ongoing support for the Wollondilly Health Alliance**



---

**Appropriate transport infrastructure**



---

**Improved telecommunication, online services and access to information**



---

**Affordable housing opportunities**



---

**Jobs creation and economic development initiatives**



---

**Reduction in domestic violence and increased community connectedness**





Advocate for

# Local Government Reform



# We want to be accountable and transparent and deliver services which are responsive to our communities' aspirations



Less red tape and more legislative reform



Integrated and shared service provision



Diverse and flexible workforce facilitated by sound industrial relations reform



Support and financial resourcing of growth impacts



Engaged, informed and connected communities

## Premier's Priorities:

- ✓ Driving public sector diversity
- ✓ Faster housing approvals
- ✓ Improving government services

## State Priorities:

- ✓ Halving time taken to assess planning applications
- ✓ Increasing Housing supply
- ✓ Government transactions via digital channels
- ✓ Attendance at cultural events



Frank McKay Building  
62-64 Menangle Street  
P O Box 21 PICTON NSW 2571  
**T** 02 4677 1100  
**F** 0246 772339  
**E** [council@wollondilly.nsw.gov.au](mailto:council@wollondilly.nsw.gov.au)  
**W** [wollondilly.nsw.gov.au](http://wollondilly.nsw.gov.au)