



Candidate Information Seminar 2016

**The Nuts and Bolts of
Local Government**

AGENDA

General Manager – Luke Johnson

Commence 6:30pm

- ✓ Welcome – Introduce Executive
- ✓ The Nuts and Bolts of Local Government
- ✓ Local Issues
- ✓ Key Focus Areas
- ✓ Questions

Conclude 8:00pm

Understanding Government

Federal Government

- Defence
- Trade Relations
- Education
- Communications
- Immigration
- Pensions
- Foreign Affairs

State Government

- Public Hospitals
- Public Schools
- Police, Ambulance and Fire Services
- State Roads

Local Government

- Town Planning
- Social Planning
- Cultural Development
- Public Libraries
- Waste Collection
- Community Services
- Local Roads

What is expected of a Councillor

- ✓ **Community advocacy and representation; input into what happens in Wollondilly**
- ✓ **Strategic policy development**
- ✓ **Oversight of Councils Delivery Program**
- ✓ **Input into service delivery priorities**
- ✓ **Input into Council projects**
- ✓ **Oversight of regulatory and statutory obligations**
- ✓ **Performance review of General Manager**

Time Commitment

- ✓ **Community Forums**
- ✓ **Council meetings**
- ✓ **Site Inspections**
- ✓ **Councillor Workshops**
- ✓ **Consideration of Council Reports**
- ✓ **Induction Program**

Governing Body

Mayor

- ✓ Chair Council meetings
- ✓ Carry out civic and ceremonial functions
- ✓ In the event of an emergency situation exercise decision-making functions on behalf of the Council
- ✓ Lead the team of Councillors
- ✓ Set the strategy (Phase 1 of reforms)

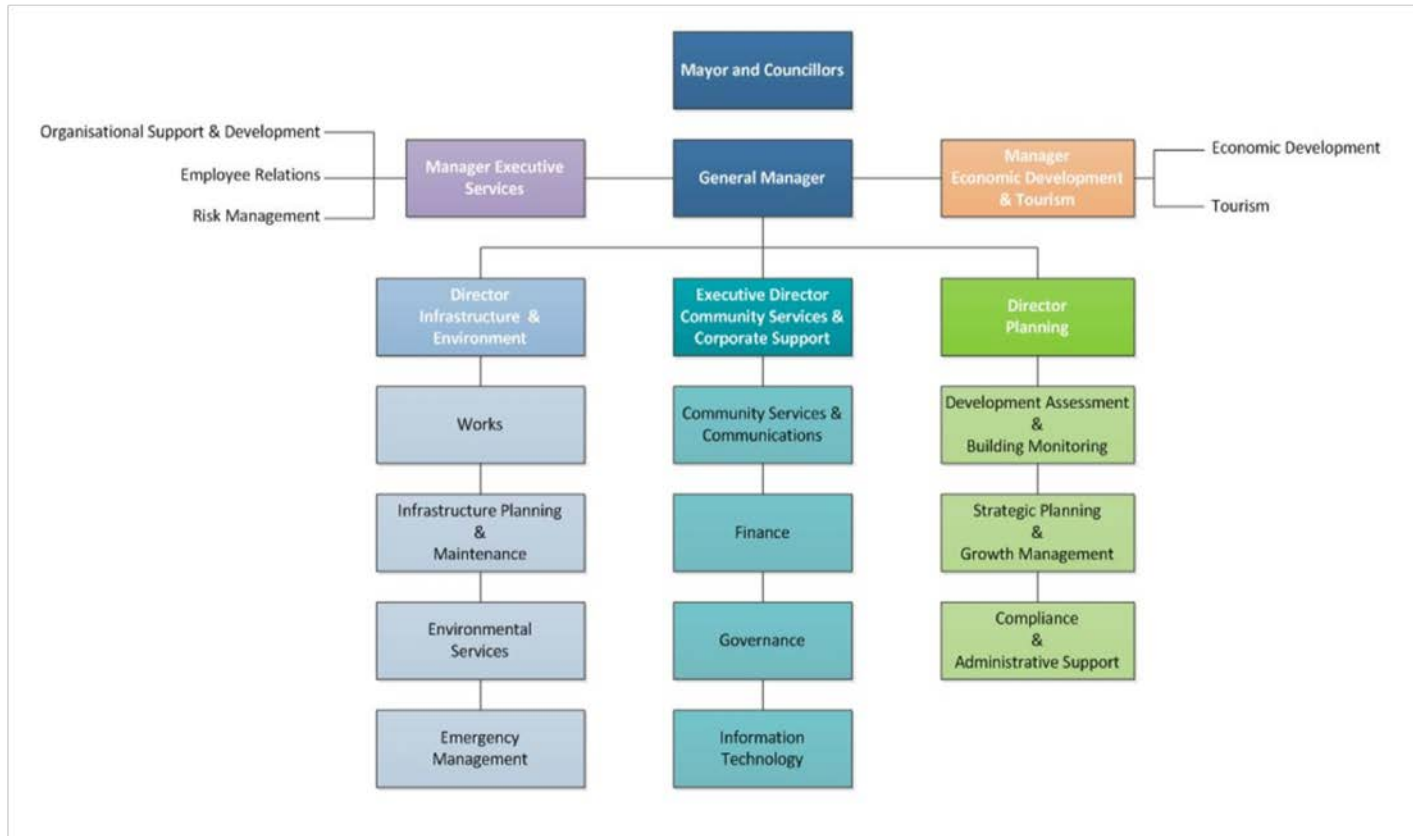
General Manager

- ✓ Efficient management of Council's operations
- ✓ Implementation of Council decisions
- ✓ Management of Council Staff
- ✓ Responsible for embedding EEO and gender equity principles into management of Council
- ✓ Exercise other functions as delegated by the Council.

Ethical Standards & Accountability to Community

- ✓ Consulting on major issues/proposals
- ✓ Making open and transparent decisions
- ✓ Councillors not protected by Parliamentary Privilege
- ✓ Regular Reporting
- ✓ Compliance to Ethical obligation
- ✓ Declaration of Interests
- ✓ Compliance with the Council's agreed Code of Conduct (Model Code)
- ✓ Reporting to Electoral Funding Authority on expenditure on campaigning activities
- ✓ Breaches/misconduct

Organisational Structure



Legislative Reform – Fit for Future

Reform – What does it mean for Local Government ?

- ✓ Currently in NSW there are 130 Councils with further reductions expected due to proposed amalgamations.
- ✓ Local Government in NSW employs over 50,000 people and spends more than \$5 billion/year
- ✓ Fit for the Future Reforms
- ✓ LG ACT and proposed Phase One amendments

Referendum

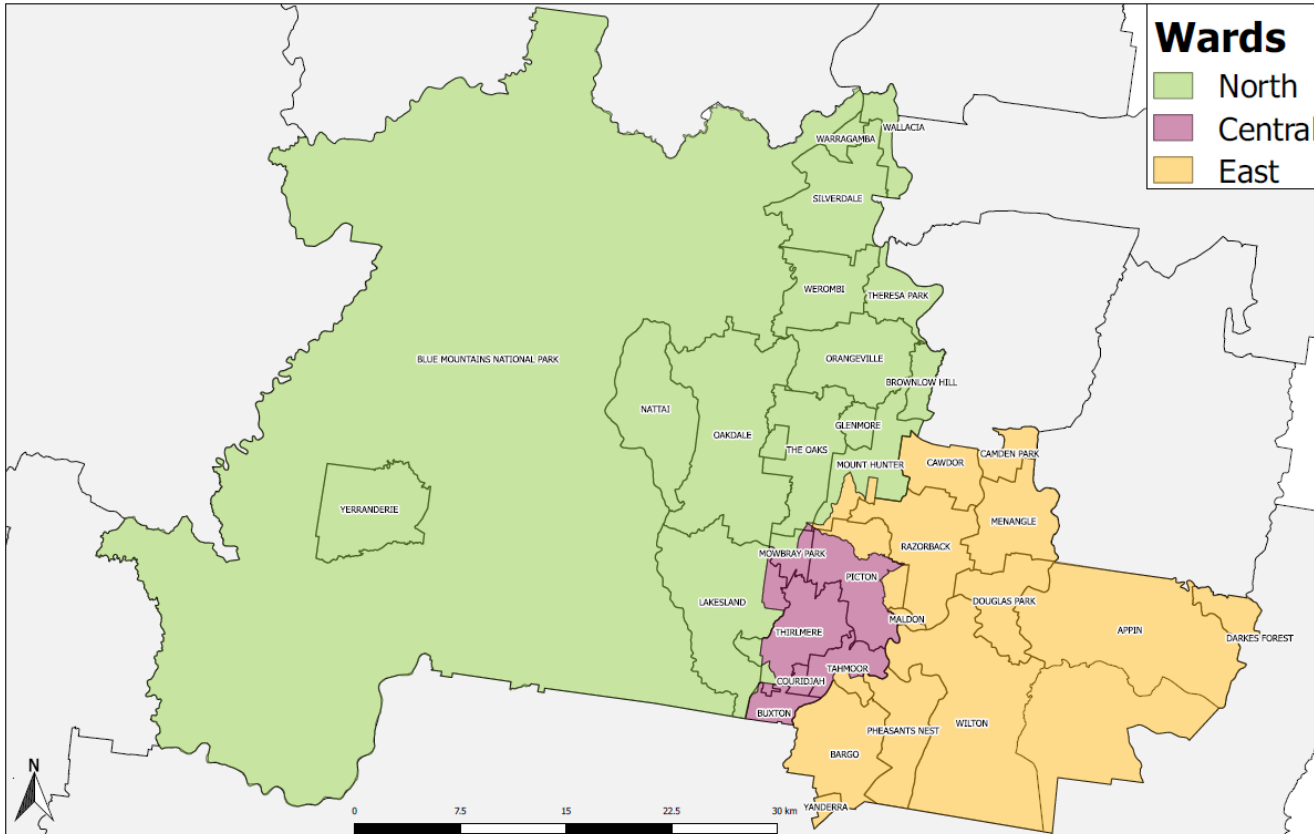
In conjunction with the Council elections on 10 September 2016, a constitutional referendum will be conducted to determine if Wollondilly wants to have a Popularly Elected Mayor and change to ward numbers.

The 'Yes' Case

- ✓ Popular election of the Mayor excludes internal politics from the Mayoral Election.
- ✓ A popularly elected Mayor can lead Council with considerable independence.
- ✓ A reduction in Wards will help to better manage any imbalance of elector numbers between Wards.

The 'No' Case

- ✓ The elected Council should not have a leader imposed upon them with whom they may not be able to work cooperatively or constructively.
- ✓ Councillors are closest to their fellow Councillors and therefore have a greater appreciation of their capabilities and credentials to fulfil the role of Mayor.
- ✓ Councillors' workloads would increase with a reduction in Ward numbers.



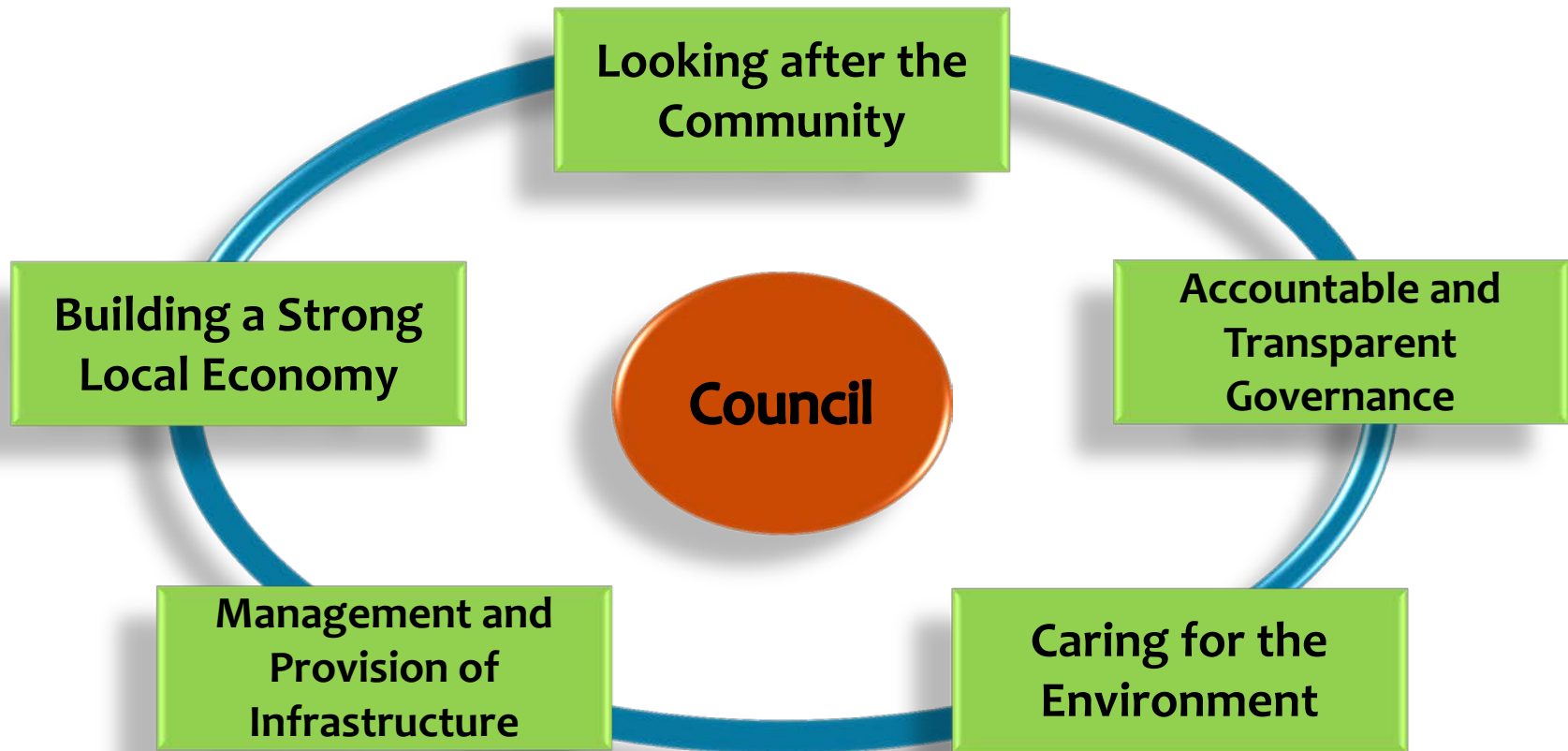
Wollondilly Shire Wards

Projection: GDA94/ MGA56

© Wollondilly Shire Council.
 © US Department of Finance and Services, Panorama Avenue, Bathurst, 2795.
 www.landscape.gov.au.
 While every care is taken to ensure the accuracy of this product, Wollondilly Shire Council and the Local / State / Federal Government departments and Non-Government organisations whom supply datasets, make no representations or warranties about its accuracy, reliability, completeness or suitability for any particular purpose and disclaims all responsibility and all liability (including without limitation, liability in negligence) for all expenses, losses, damages (including indirect or consequential damages) and costs which you might incur as a result of the product being inaccurate or incomplete in any way and for any reason.



Council Services and Functions



Integrated Planning and Reporting

- ✓ **Community Strategic Plan (10 years or longer)**
- ✓ **Resourcing Strategy (10 years or longer)**
- ✓ **Delivery Program (4 years)**
- ✓ **Operational Plan (1 year)**
- ✓ **Annual Report**

Strategic Projects

- ✓ **Wilton Junction**
- ✓ **Peri Urban**
- ✓ **WHA – Wollondilly Health Alliance**
- ✓ **5 Ways to Wollondilly**
- ✓ **NGAA – National Growth Areas Alliance**

Some Key Focus Areas

- ✓ **Picton Revitalisation**
- ✓ **Peri Urban**
- ✓ **Wilton Junction**
- ✓ **Broughton Pass**
- ✓ **Infrastructure – Maintenance & Renewal**
- ✓ **Health Issues & Community Well-Being**

NSW Electoral Commission

- ✓ NSW Electoral Commission local government event website www.votensw.info
- ✓ The candidate helpdesk 1300 088 942 for any enquiries
- ✓ NSW Electoral Commission is where information regarding their funding & disclosure obligations, or enquiries regarding the election timing and process can be sourced from.
- ✓ ECNSW Fact Sheet Local Government Election Laws

Councillor Fees, Expenses & Facilities

- ✓ Allowance
- ✓ Conferences
- ✓ Training
- ✓ Travel, accommodation, meals (Council business)
- ✓ Phone, internet, computer
- ✓ Stationary to support Council related duties
- ✓ Carer's expenses whilst performing Council Duties

QUESTIONS ?