



ASSET MAPPING & COMMUNITY PROFILES PROJECT

OAKDALE | NATTAI | YERRANDERIE

2023



Acknowledgement^{*}

Wollondilly Shire Council acknowledges the traditional custodians of the land in Wollondilly, the Dharawal and Gundungurra peoples.

We acknowledge the living culture and spiritual connections to the land for the Dharawal and Gundungurra people and all Aboriginal Nation Groups that may have connections to the area; and that Wollondilly is remarkably placed as the intersection of many tribal lands.

We recognise the traditional Custodians who have occupied and cared for this Country over countless generations and celebrate their continuing contributions to the Shire.

We also acknowledge and remember the Dharawal and Gundungurra peoples who were killed in the Appin Massacre on 17 April 1816.

**We acknowledge our continuing collaboration with the Tharawal Local Aboriginal Land Council*

CONTENTS

| | |
|---|-----------|
| Acknowledgement of Country | 3 |
| About Wollondilly Shire | 7 |
| Population Data | 9 |
| Wollondilly Shire Map | 10 |
| Emergency Services | 13 |
| Council Assets | 13 |
| Public Transport | 14 |
| Medical Facilities & Pharmacies | 14 |
| Neighbourhood Safer Spaces | 15 |
| About Oakdale, Nattai & Yerranderie | 16 |
| Population Data | 19 |
| Area Map | 20 |
| Areas & Information | 22 |
| Disaster Services | 24 |
| Schools | 24 |
| Childcare Services & Preschools | 24 |
| Sports Associations | 25 |
| Community Associations | 25 |
| Prominent Businesses | 26 |
| Private Animal Boarding Facilities | 27 |
| Online Facebook Community Forums & Pages | 28 |
| Council Assets | 29 |
| Neighbourhood Safer Spaces | 29 |

A map of Wollondilly Shire, Australia, showing various towns and villages. The map is overlaid on a green-to-teal gradient background. The towns labeled include Wallactia, Warragamba, Silverdale, Werombi, Theresa Park, Orangeville, Brownlow Hill, Glenmore, The Oaks, Mount Hunter, Cawdor, Camden Park, Menangle, Razorback, Mowbray Park, Picton, Douglas Park, Appin, Lakesland, Thirlmere, Maldon, Tahmoor, Couridjah, Buxton, Pheasants Nest, Wilton, Bargo, and Yanderra. The title 'WOLLONDILLY SHIRE' is written in large, white, sans-serif capital letters across the top half of the map.

WOLLONDILLY SHIRE

WOLLONDILLY

The Wollondilly Shire Local Government Area (LGA) has many unique towns and villages, ranging from Warragamba in the north to Yanderra in the south. The Shire is a large rural area that offers beautiful landscapes and has a strong sense of community spirit.

In 2019/20, the community of Wollondilly was significantly impacted by the Green Wattle Creek bushfire, resulting in the loss of private homes, wildlife, facilities, and hectares of National Park bushland. Following this tragic event, the community faced additional challenges with storm events and flood damage, exacerbating the strain on the community.

In consultation with residents, response agencies, and key stakeholders, Wollondilly Shire Council developed the Activate Wollondilly 2021: Long-Term Recovery and Resilience Plan. This plan aims to assist the community through recovery and resilience building, and it identifies key strategies to support and guide the recovery process.

Asset Mapping was identified as a key strategy to support the implementation of the plan. This document is designed to highlight and inform the community about the facilities and groups available in their local area that can provide help in times of need.

Please Note:

- It is the responsibility of the RFS to identify and communicate evacuation points accordingly during an emergency. These points are often Community Assets and Council will work with the RFS to support accurate communication to the community.
- Evacuation Routes can change during an emergency. It is important to seek current RFS information before taking action.

Population Data

WOLLONDILLY



A population of
54,176 people
in total

27,032
Male (50.1%)



26,931
Female (49.9%)



2,364
Indigenous (4.4%)



5,552
Seniors (70+ Years)
(10.3%)



3,165
Employed
(97.6%)

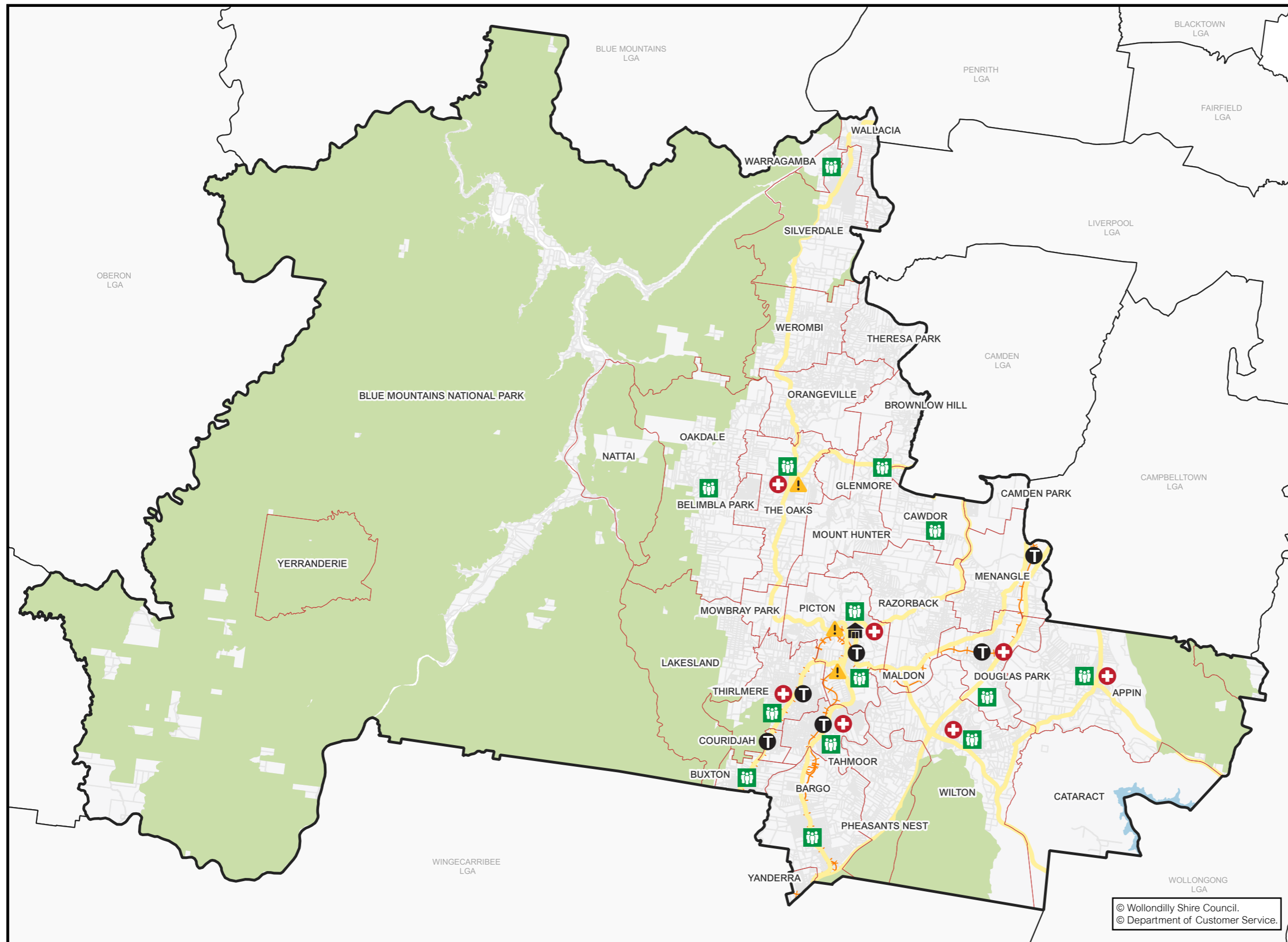


5,992
Born Overseas
(11.1%)



322
Non-English
Speaking (0.6%)

WOLLONDILLY SHIRE MAP





EMERGENCY SERVICES

| Area | Information |
|--------------------|---|
| Wollondilly | <p>Rural Fire Service - Bushfire Information Line - Ph: 1800 679 737</p> <p>Rural Fire Service Wollondilly District Office - Ph: (02) 4677 7000</p> |
| | <p>Wollondilly State Emergency Service (SES) 65 Bridge Street, Picton, 2571 Ph: 132 500 Fb: https://www.facebook.com/NSWSESWDY</p> |
| | <p>Picton Police Station 86 Argyle St, Picton NSW 2571 Ph: (02) 4677 8999</p> |
| | <p>The Oaks Police Station 57 Merlin St, The Oaks NSW 2570 Ph: (02) 4657 1142</p> |
| | <p>Picton Ambulance Station 79/81 Old Hume Hwy, Picton NSW 2571</p> |
| | <p>Camden PAC Office 278 Camden Valley Way NARELLAN 2567 Ph: (02) 4632 4499</p> |
| | <p>Warragamba Police Station 4 Third St, Warragamba NSW 2752 Ph: (02) 4774 1105</p> |

COUNCIL ASSETS

| Area | Information |
|--------------------|--|
| Wollondilly | <p>The Wollondilly Shire Hall 44-60 Menangle Street, Picton NSW 2571 Ph: (02) 4677 1100 E: council@wollondilly.nsw.gov.au</p> |
| | <p>Wollondilly Library 42 Menangle Street, Picton NSW 2571 Ph: (02) 4677 8300 E: library@wollondilly.nsw.gov.au Fb: https://www.facebook.com/WollondillyLibrary W: http://www.library.wollondilly.nsw.gov.au/home</p> |
| | <p>Wollondilly Shire Council Frank McKay Building, 62-64 Menangle Street, Picton NSW 2571 Ph: (02) 4677 1100 E: council@wollondilly.nsw.gov.au Fb: https://www.facebook.com/wollondilly W: https://www.wollondilly.nsw.gov.au</p> |

| PUBLIC TRANSPORT | |
|------------------|--|
| Area | Information |
| Wollondilly | Train Stations: Menangle Park Douglas Park Picton Thirlmere Tahmoor Bargo Yerrinbool |

| MEDICAL FACILITIES & PHARMACIES | |
|---------------------------------|--|
| Area | Information |
| Wollondilly | Wollondilly Medical Centre Centre, Shop 16/117 Remembrance Driveway, Tahmoor NSW 2573 Ph: (02) 4607 2905 W: hotdoc.com.au Wollondilly Specialist Medical Centre Shop 15, Tahmoor Shopping Village (next to Foodworks), Cnr Remembrance Dr & Bronzewing St, Tahmoor NSW 2573 Ph: (02) 4683 0070 Thirlmere Pharmacy 29 Oak St, Thirlmere Ph: 4683 2866 Wilton Pharmacy 1 Greenbridge Drive, Wilton Ph: (02) 4630 9333 Priceline Pharmacy Tahmoor Shop 12 Tahmoor Town Centre, 117 Remembrance Driveway, Tahmoor NSW 2573 Ph: (02) 4681 8713 Picton Discount Drug Store Shop T25-T27/9 Margaret St, Picton NSW 2571 Ph: 4677 1294 Pharmacy 4 Less Tahmoor Tahmoor Shopping Village 5&6, 161-173 Remembrance Driveway, Tahmoor NSW 2573 Ph: (02) 4681 0224 The Oaks Village Pharmacy 67 John St, The Oaks NSW 2570 Ph: (02) 4657 1387 Appin Compounding Pharmacy Shop 2/75 Appin Rd, Appin NSW 2560 Ph: (02) 4631 1488 Douglas Park Pharmacy Shop 2A/147 Camden Rd, Douglas Park NSW 2569 Ph: (02) 4632 8554 |

| NEIGHBOURHOOD SAFER SPACES | |
|----------------------------|--|
| Area | Information |
| Wollondilly | St Mary's Towers 415 Douglas Park Drive, Douglas Park Wilton Community Centre Broughton Street, Wilton Main Street Appin Appin Road, Appin Land adjacent to Bargo Hotel 225-227 Great Southern Road, Bargo Bargo Shops Remembrance Drive, Bargo Hall within Bargo Showground Radnor Road, Bargo Buxton Fire Shed West Parade, Buxton The Oaks Public School John Street, The Oaks The Oaks Hall Russell Street, The Oaks Warragamba Public School Hall Weir Road, Warragamba Oakdale Shops Burraborang Road, Oakdale Oakdale Community Hall Cnr Egans Road and Burraborang Road, Oakdale Mt Hunter Community Hall Corner of Burraborang Rd and Clyde Place, Mt Hunter Cawdor Public School 685 Cawdor Road, Cawdor Picton High School 480 Argyle Street, Picton Picton Bowling Club 55-56 Argyle Street, Picton Carpark between Coles & Council Admin Building Margaret Street, Picton Tahmoor Town Centre Carpark Cnr of Thirlmere Way and Remembrance Drive, Tahmoor Wollondilly Youth Hub/ Community Centre Harper Close, Tahmoor Thirlmere Public School Oaks Street, Thirlmere Thirlmere Memorial Park Oaks Street, Thirlmere |



OAKDALE NATTAI YERRANDERIE

Oakdale, Nattai, and Yerranderie encompass a stunning array of natural landscapes such as the Burragorang lookout, cherished and safeguarded by the dedicated volunteer Fire Brigade in Oakdale. Residents in this area often utilise Oakdale's businesses and services, for more specific services they travel outside the area. Nattai locals affectionately label it a 'quiet and peaceful place,' praising the close-knit community, where 'you know just about everybody'.

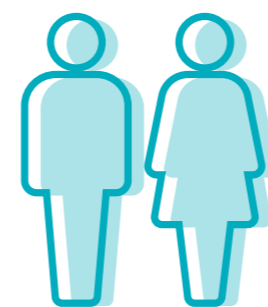
Information contained in this document is derived from Wollondilly Shire Council's Community Strengths and Resources Questionnaire 2023 and is a documentation of community thoughts and opinions. Statistical data is sourced from id.community and is supported by ABS Census data 2021. <https://profile.id.com.au/wollondilly/about?WebID=220>

Population Data

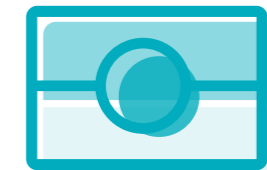
OAKDALE | NATTAI | YERRANDERIE



A population of
2,150 people
in total



1,087
Male (51.5%)
1,023
Female (48.5%)



121
Indigenous
(5.7%)



200
Seniors
(>70 Years)
(9.4%)

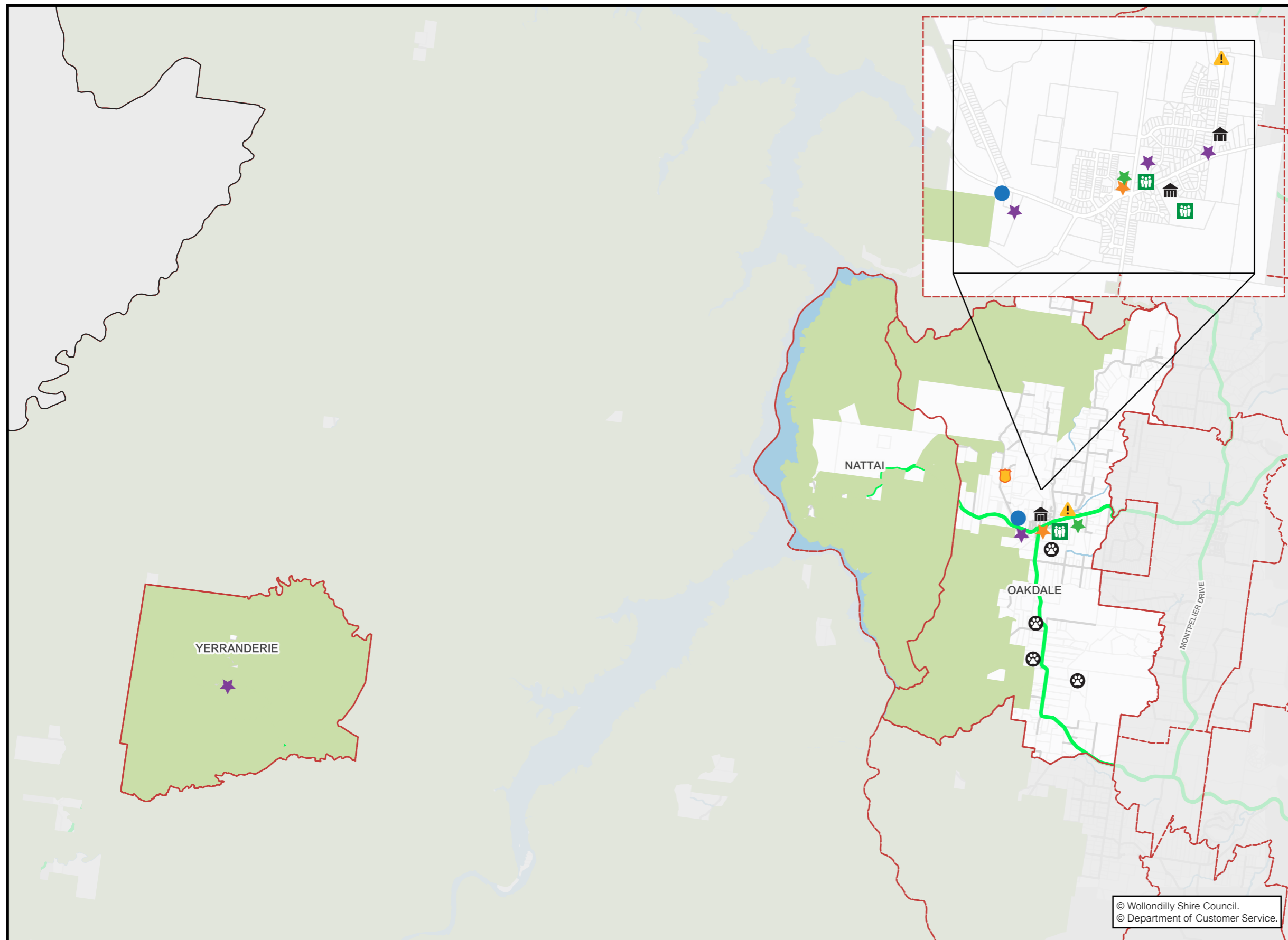


193
Born Overseas
(9.1%)













21
Non-English
Speaking
(1%)

AREA MAP



Legend

-  Childcare Centres & Preschools
-  Community Associations
-  Council Assets
-  Disaster/Emergency Services
-  Private Animal Boarding Facilities
-  Prominent Businesses
-  Schools
-  Sports Associations
-  Evacuation Route
-  Neighbourhood Safer Spaces

© Wollondilly Shire Council.
© Department of Customer Service.

AREAS & INFORMATION

| DISASTER SERVICES | |
|--------------------|---|
| Area | Information |
| All Areas | <p>Rural Fire Service - Bushfire Information Line - Ph: 1800 679 737</p> <p>Rural Fire Service Wollondilly District Office - Ph: 4677 7000</p> <p>Wollondilly State Emergency Service (SES) 65 Bridge Street, Picton, 2571 Ph: 132 500 Fb: https://www.facebook.com/NSWSESWDY</p> |
| Oakdale | <p>Oakdale Rural Fire Brigade 50-56 Egans Road, Oakdale NSW 2570 Fb: https://www.facebook.com/OakdaleRuralFireBrigade</p> |
| Nattai | NIL |
| Yerranderie | NIL |

| SCHOOLS | |
|--------------------|---|
| Area | Information |
| Oakdale | <p>Oakdale Public School Burraborang Road, Oakdale NSW 2570 Ph: (02) 4659 6251 E: oakdale-p.school@det.nsw.edu.au</p> |
| Nattai | NIL |
| Yerranderie | NIL |

| CHILDCARE SERVICES & PRESCHOOLS | |
|---------------------------------|---|
| Area | Information |
| Oakdale | <p>Oakdale Public School Burraborang Road, Oakdale NSW 2570 Ph: 1300 665 275 E: info@inspireme.com.au</p> |
| Nattai | NIL |
| Yerranderie | NIL |

| SPORTS ASSOCIATIONS | |
|---------------------|--|
| Area | Information |
| Oakdale | <p>Burraborang District Soccer Club E: burrasoccersecretary@gmail.com W: https://www.burraborang-soccer.org.au</p> <p>Oakdale Workers Rugby League Football Club Ph: 0414 896 195 E: oakdaleworkers@outlook.com Fb: https://www.facebook.com/OWRLFC/</p> <p>Oakdale Junior Motocross Club 190 Steveys Forest Road, Oakdale NSW 2570 Ph: 0416 081 104 E: enquiries@oakdalemx.com.au Fb: https://www.facebook.com/oakdale.jmcc/?ref=page_internal</p> |
| Nattai | NIL |
| Yerranderie | NIL |

| COMMUNITY ASSOCIATIONS | |
|------------------------|--|
| Area | Information |
| Oakdale | <p>Oakdale Men's Shed 1605 Burraborang Road, Oakdale NSW 2570 Ph: 0412 683 179 (Frank Bashford) Ph: 1300 550 009 E: amsa@mensshed.net – Head Office email contact W: https://mensshed.org</p> |
| Nattai | NIL |
| Yerranderie | <p>Yerranderie Community Group Fb: https://www.facebook.com/groups/228407613839351</p> |

| PROMINENT BUSINESSES | |
|----------------------|---|
| Area | Information |
| All Areas | <p>Picton Chamber of Commerce (incl surrounding suburbs) W: https://www.facebook.com/PictonChamberofCommerce</p> <p>Wollondilly Local Business Directory Fb: https://www.facebook.com/groups/1305777129542823/</p> |
| Oakdale | <p>Australia Post Office LPO 1480 Burragorang Road, Oakdale NSW 2570 Ph: (02) 4659 6240</p> <p>Oakdale Convenience and Bottle Shop Shop 6-8/1520 Burragorang Road, Oakdale NSW 2570 Fb: https://www.facebook.com/OakdaleCBS/</p> <p>Oakdale Diner 1520 Burragorang Road, Oakdale NSW 2570 Ph: (02) 4603 3801 Fb: https://www.facebook.com/oakdalediner/</p> <p>Oakdale Workers Sport & Recreation Club 1605 Burragorang Road, Oakdale NSW 2570 Ph: (02) 4604 0963 Fb: https://www.facebook.com/oakdaleworkers W: http://oakdaleworkers.com.au</p> |
| Nattai | NIL |
| Yerranderie | <p>The Bank Room Yerranderie Regional Park Ph: 1300 072 757 E: Parks.info@environment.nsw.gov.au W: https://www.nationalparks.nsw.gov.au/camping-and-accommodation/accommodation/the-bank-room</p> <p>Post Office Lodge Yerranderie Regional Park Ph: 1300 072 757 E: Parks.info@environment.nsw.gov.au W: https://www.nationalparks.nsw.gov.au/camping-and-accommodation/accommodation/post-office-lodge</p> <p>Slippery Norris Cottage Yerranderie Regional Park Ph: 1300 072 757 E: Parks.info@environment.nsw.gov.au W: https://www.nationalparks.nsw.gov.au/camping-and-accommodation/accommodation/slippery-norris-cottage</p> <p>Yerranderie Regional Park – Private town Campground Yerranderie Regional Park Ph: 1300 072 757 E: Parks.info@environment.nsw.gov.au W: https://www.nationalparks.nsw.gov.au/camping-and-accommodation/campgrounds/private-town-campground</p> <p>Yerranderie Regional Park – Government Town Campground Yerranderie Regional Park Ph: 1300 072 757 E: Parks.info@environment.nsw.gov.au W: https://www.nationalparks.nsw.gov.au/camping-and-accommodation/campgrounds/government-town-campground</p> |

| PRIVATE ANIMAL BOARDING FACILITIES | |
|------------------------------------|--|
| Area | Information |
| Oakdale | <p>Cavaleira Agistment Ph: 0406 147 002 E: sineads@outlook.com Fb: https://www.facebook.com/cavaleiraagistment</p> <p>Endeavour Park Equestrian Centre 1435 Barkers Lodge Road, Oakdale NSW 2570 Ph: (02) 4659 7033 E: bookings@endeavourpark.com.au Fb: https://www.facebook.com/Endeavour-Park-Equestrian-Centre-217284478284607/</p> <p>Heritage Park 1370 Barkers Lodge Road, Oakdale NSW 2570 Ph: (02) 4680 9496 / 0417 650 874 E: timmartinracing966@gmail.com Fb: https://www.facebook.com/HorseSpellingBreaking/</p> <p>Silver Hills Horse Agistment Centre 1830 Barkers Lodge Road, Oakdale NSW 2570 Ph: (02) 4659 6538</p> <p>Whispering Pines Thoroughbreds 1565 Barkers Lodge Road, Oakdale NSW 2570 Ph: (02) 4659 7353 E: whisperingpinest@activ8.net.au W: https://whisperingpinesthoroughbreds.com.au/about/</p> |
| Nattai | NIL |
| Yerranderie | NIL |

| ONLINE FACEBOOK COMMUNITY FORUMS & PAGES | |
|--|--|
| Area | Information |
| All Areas | Macarthur-Wollondilly Community Noticeboard Fb: https://www.facebook.com/groups/1653921468167893/ |
| | Mayor Matt Gould Fb: https://www.facebook.com/CrMattGould |
| | Picton, Camden and surrounding suburbs Community Page Fb: https://www.facebook.com/groups/861602960581170 |
| | Picton Wollondilly and Macarthur Community Noticeboard Fb: https://www.facebook.com/groups/745054278934576/ |
| | What's Happening in Wollondilly Fb: https://www.facebook.com/groups/2853710421546044/ |
| | Wollondilly Living Fb: https://www.facebook.com/groups/wollondillyliving/about/ |
| | Wollondilly Community Living Fb: https://www.facebook.com/groups/973623299396093/ |
| | Wollondilly Incidents & Alerts Fb: https://www.facebook.com/groups/wollondilly/ |
| | Wollondilly Community Noticeboard Fb: https://www.facebook.com/groups/945217202158492/ |
| | Wollondilly Life Fb: https://www.facebook.com/groups/200220494140376/ |
| | Wollondilly Shire Council Fb: https://www.facebook.com/wollondilly |
| Oakdale | All things important in Oakdale 2570 NSW Fb: https://www.facebook.com/groups/848585211881336 |
| | What's happening in The Oaks, Mount Hunter, Belimbla Park & Oakdale Fb: https://www.facebook.com/groups/1698370250413710/ |
| | Our Community The Oaks, Mount Hunter, Oakdale, Belimbla Park, Glenmore and Surrounding towns Fb: https://www.facebook.com/groups/TheOaksBelimblaOakdale |
| Nattai | NIL |
| Yerranderie | NIL |

| COUNCIL ASSETS | |
|----------------|---|
| Area | Information |
| Oakdale | Oakdale Community Hall Willis Park 1515 Burragorang Road, Oakdale NSW 2570 Ph: (02) 4677 1100 E: council@wollondilly.nsw.gov.au |
| | Oakdale Tennis Courts Egans Rd, Oakdale NSW 2570 Ph: (02) 4677 1100 E: council@wollondilly.nsw.gov.au |
| Nattai | NIL |
| Yerranderie | NIL |

| NEIGHBOURHOOD SAFER SPACES | |
|----------------------------|---|
| Area | Information |
| Oakdale | Oakdale Shops Burragorang Road, Oakdale |
| | Oakdale Community Hall Cnr Egans Road and Burragorang Road, Oakdale |
| Nattai | NIL |
| Yerranderie | NIL |



Wollondilly
Shire Council

www.wollondilly.nsw.gov.au