



ASSET MAPPING & COMMUNITY PROFILES PROJECT

BUXTON | COURIDJAH

2023



Acknowledgement^{*}

Wollondilly Shire Council acknowledges the traditional custodians of the land in Wollondilly, the Dharawal and Gundungurra peoples.

We acknowledge the living culture and spiritual connections to the land for the Dharawal and Gundungurra people and all Aboriginal Nation Groups that may have connections to the area; and that Wollondilly is remarkably placed as the intersection of many tribal lands.

We recognise the traditional Custodians who have occupied and cared for this Country over countless generations and celebrate their continuing contributions to the Shire.

We also acknowledge and remember the Dharawal and Gundungurra peoples who were killed in the Appin Massacre on 17 April 1816.

**We acknowledge our continuing collaboration with the Tharawal Local Aboriginal Land Council*

CONTENTS

Acknowledgement of Country	3
About Wollondilly Shire	7
Population Data	9
Wollondilly Shire Map	10
Emergency Services	13
Council Assets	13
Public Transport	14
Medical Facilities & Pharmacies	14
Neighbourhood Safer Spaces	15
About Buxton & Couridjah	16
Population Data	19
Area Map	20
Areas & Information	22
Disaster Services	24
Schools	24
Childcare Services & Preschools	24
Sports Associations	25
Community Associations	25
Prominent Businesses	26
Private Animal Boarding Facilities	26
Online Facebook Community Forums & Pages	27
Council Assets	27
Neighbourhood Safer Spaces	27

A map of Wollondilly Shire, Australia, showing various towns and villages. The map is overlaid with a green-to-teal gradient. The title 'WOLLONDILLY SHIRE' is written in large, white, sans-serif capital letters across the top half of the map. The towns labeled on the map include: WALLACTIA, WARRAGAMBA, SILVERDALE, WEROMBI, THERESA PARK, ORANGEVILLE, BROWNLOW HILL, NATTAI, OAKDALE, GLENMORE, THE OAKS, MOUNT HUNTER, CAWDOR, CAMDEN PARK, MENANGLE, RAZORBACK, MOWBRAY PARK, PICTON, DOUGLAS PARK, LAKESLAND, THIRLMERE, MALDON, APPIN, THAHMOOR, COURIDJAH, BUXTON, PHEASANTS NEST, WILTON, BARGO, and YANDERRA.

WOLLONDILLY SHIRE

WOLLONDILLY

The Wollondilly Shire Local Government Area (LGA) has many unique towns and villages, ranging from Warragamba in the north to Yanderra in the south. The Shire is a large rural area that offers beautiful landscapes and has a strong sense of community spirit.

In 2019/20, the community of Wollondilly was significantly impacted by the Green Wattle Creek bushfire, resulting in the loss of private homes, wildlife, facilities, and hectares of National Park bushland. Following this tragic event, the community faced additional challenges with storm events and flood damage, exacerbating the strain on the community.

In consultation with residents, response agencies, and key stakeholders, Wollondilly Shire Council developed the Activate Wollondilly 2021: Long-Term Recovery and Resilience Plan. This plan aims to assist the community through recovery and resilience building, and it identifies key strategies to support and guide the recovery process.

Asset Mapping was identified as a key strategy to support the implementation of the plan. This document is designed to highlight and inform the community about the facilities and groups available in their local area that can provide help in times of need.

Please Note:

- It is the responsibility of the RFS to identify and communicate evacuation points accordingly during an emergency. These points are often Community Assets and Council will work with the RFS to support accurate communication to the community.
- Evacuation Routes can change during an emergency. It is important to seek current RFS information before taking action.

Population Data

WOLLONDILLY



A population of
54,176 people
in total

27,032
Male (50.1%)



26,931
Female (49.9%)



2,364
Indigenous (4.4%)



5,552
Seniors (70+ Years)
(10.3%)



3,165
Employed
(97.6%)

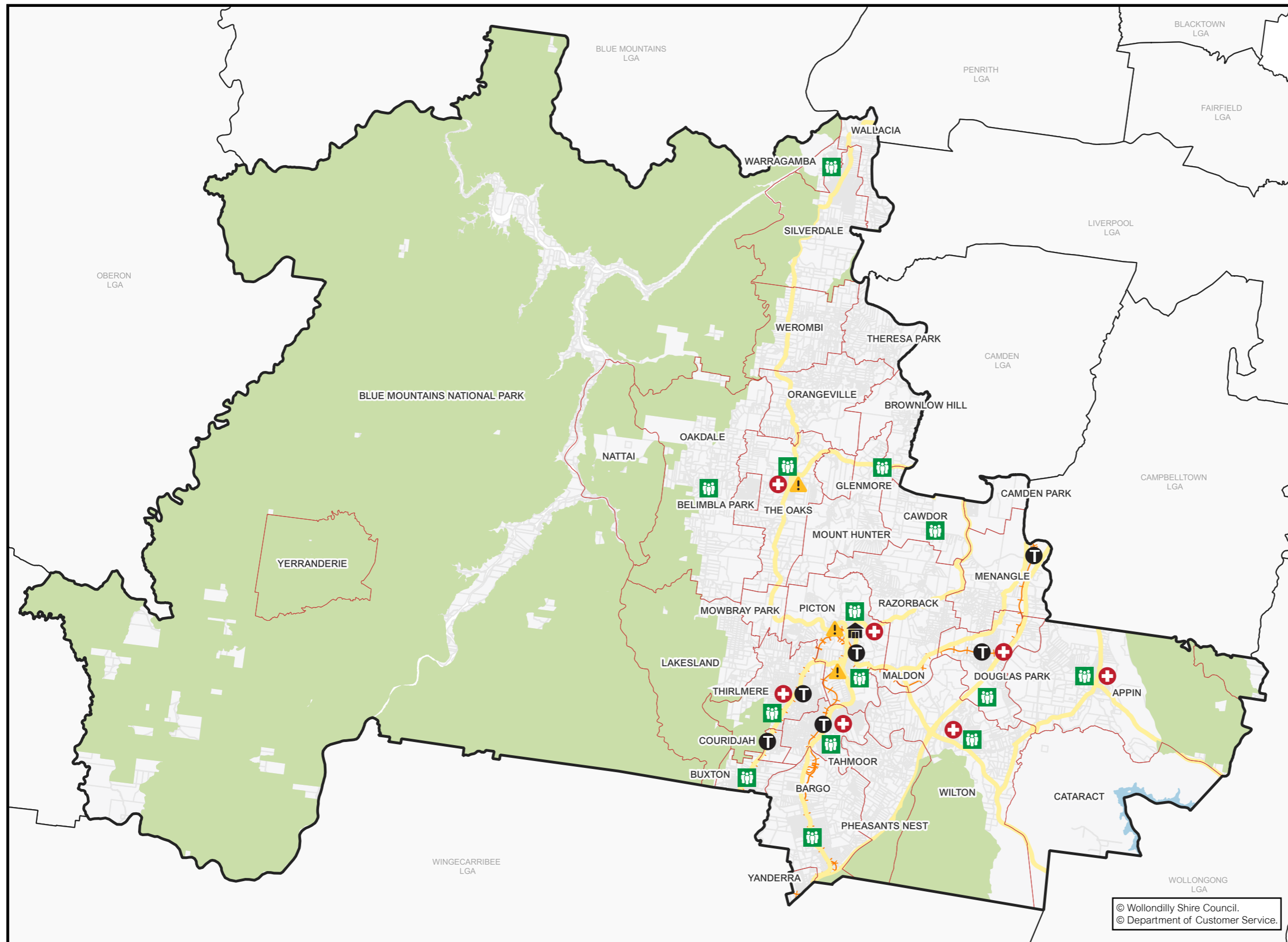


5,992
Born Overseas
(11.1%)



322
Non-English
Speaking (0.6%)

WOLLONDILLY SHIRE MAP



Legend

- Disaster/Emergency Services
- Council Assets
- Public Transport
- Medical Facilities & Pharmacies
- Neighbourhood Safer Spaces

© Wollondilly Shire Council.
© Department of Customer Service.



EMERGENCY SERVICES	
Area	Information
Wollondilly	<p>Rural Fire Service - Bushfire Information Line - Ph: 1800 679 737</p> <p>Rural Fire Service Wollondilly District Office - Ph: (02) 4677 7000</p> <p>Wollondilly State Emergency Service (SES) 65 Bridge Street, Picton, 2571 Ph: 132 500 Fb: https://www.facebook.com/NSWSESWDY</p> <p>Picton Police Station 86 Argyle St, Picton NSW 2571 Ph: (02) 4677 8999</p> <p>The Oaks Police Station 57 Merlin St, The Oaks NSW 2570 Ph: (02) 4657 1142</p> <p>Picton Ambulance Station 79/81 Old Hume Hwy, Picton NSW 2571</p> <p>Camden PAC Office 278 Camden Valley Way NARELLAN 2567 Ph: (02) 4632 4499</p> <p>Warragamba Police Station 4 Third St, Warragamba NSW 2752 Ph: (02) 4774 1105</p>

COUNCIL ASSETS	
Area	Information
Wollondilly	<p>The Wollondilly Shire Hall 44-60 Menangle Street, Picton NSW 2571 Ph: (02) 4677 1100 E: council@wollondilly.nsw.gov.au</p> <p>Wollondilly Library 42 Menangle Street, Picton NSW 2571 Ph: (02) 4677 8300 E: library@wollondilly.nsw.gov.au Fb: https://www.facebook.com/WollondillyLibrary W: http://www.library.wollondilly.nsw.gov.au/home</p> <p>Wollondilly Shire Council Frank McKay Building, 62-64 Menangle Street, Picton NSW 2571 Ph: (02) 4677 1100 E: council@wollondilly.nsw.gov.au Fb: https://www.facebook.com/wollondilly W: https://www.wollondilly.nsw.gov.au</p>

PUBLIC TRANSPORT	
Area	Information
Wollondilly	Train Stations: Menangle Park Douglas Park Picton Thirlmere Tahmoor Bargo Yerrinbool

MEDICAL FACILITIES & PHARMACIES	
Area	Information
Wollondilly	Wollondilly Medical Centre Centre, Shop 16/117 Remembrance Driveway, Tahmoor NSW 2573 Ph: (02) 4607 2905 W: hotdoc.com.au Wollondilly Specialist Medical Centre Shop 15, Tahmoor Shopping Village (next to Foodworks), Cnr Remembrance Dr & Bronzewing St, Tahmoor NSW 2573 Ph: (02) 4683 0070 Thirlmere Pharmacy 29 Oak St, Thirlmere Ph: (02) 4683 2866 Wilton Pharmacy 1 Greenbridge Drive, Wilton Ph: (02) 4630 9333 Priceline Pharmacy Tahmoor Shop 12 Tahmoor Town Centre, 117 Remembrance Driveway, Tahmoor NSW 2573 Ph: (02) 4681 8713 Picton Discount Drug Store Shop T25-T27/9 Margaret St, Picton NSW 2571 Ph: 4677 1294 Pharmacy 4 Less Tahmoor Tahmoor Shopping Village 5&6, 161-173 Remembrance Driveway, Tahmoor NSW 2573 Ph: (02) 4681 0224 The Oaks Village Pharmacy 67 John St, The Oaks NSW 2570 Ph: (02) 4657 1387 Appin Compounding Pharmacy Shop 2/75 Appin Rd, Appin NSW 2560 Ph: (02) 4631 1488 Douglas Park Pharmacy Shop 2A/147 Camden Rd, Douglas Park NSW 2569 Ph: (02) 4632 8554

NEIGHBOURHOOD SAFER SPACES	
Area	Information
Wollondilly	St Mary's Towers 415 Douglas Park Drive, Douglas Park Wilton Community Centre Broughton Street, Wilton Main Street Appin Appin Road, Appin Land adjacent to Bargo Hotel 225-227 Great Southern Road, Bargo Bargo Shops Remembrance Drive, Bargo Hall within Bargo Showground Radnor Road, Bargo Buxton Fire Shed West Parade, Buxton The Oaks Public School John Street, The Oaks The Oaks Hall Russell Street, The Oaks Warragamba Public School Hall Weir Road, Warragamba Oakdale Shops Burraborang Road, Oakdale Oakdale Community Hall Cnr Egans Road and Burraborang Road, Oakdale Mt Hunter Community Hall Corner of Burraborang Rd and Clyde Place, Mt Hunter Cawdor Public School 685 Cawdor Road, Cawdor Picton High School 480 Argyle Street, Picton Picton Bowling Club 55-56 Argyle Street, Picton Carpark between Coles & Council Admin Building Margaret Street, Picton Tahmoor Town Centre Carpark Cnr of Thirlmere Way and Remembrance Drive, Tahmoor Wollondilly Youth Hub/ Community Centre Harper Close, Tahmoor Thirlmere Public School Oaks Street, Thirlmere Thirlmere Memorial Park Oaks Street, Thirlmere



BUXTON COURIDJAH

Buxton and Couridjah are two small towns located in a bushland setting on the southern edge of the Wollondilly Shire. Buxton residents value their tight knit neighbourhood through their access and support of the local community association and Memorial Playground at Telopea Park. Couridjah captivates with its old-world charm, preserving historic buildings and offering breathtaking countryside views.

Both towns share a deep connection with their local volunteer community, particularly with the dedicated RFS brigade, safeguarding their natural beauty and safety.

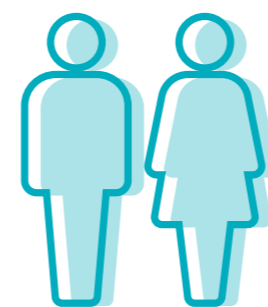
Information contained in this document is derived from Wollondilly Shire Council's Community Strengths and Resources Questionnaire 2023 and is a documentation of community thoughts and opinions. Statistical data is sourced from id.community and is supported by ABS Census data 2021. <https://profile.id.com.au/wollondilly/about?WebID=220>

Population Data

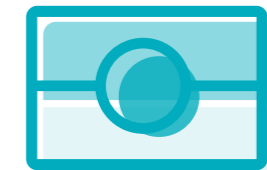
BUXTON | COURIDJAH



A population of **2,246** people in total



1,132
Male (50.5%)
1,109
Female (49.5%)



125
Indigenous
(5.6%)



129
Seniors
(>70 Years)
(5.7%)

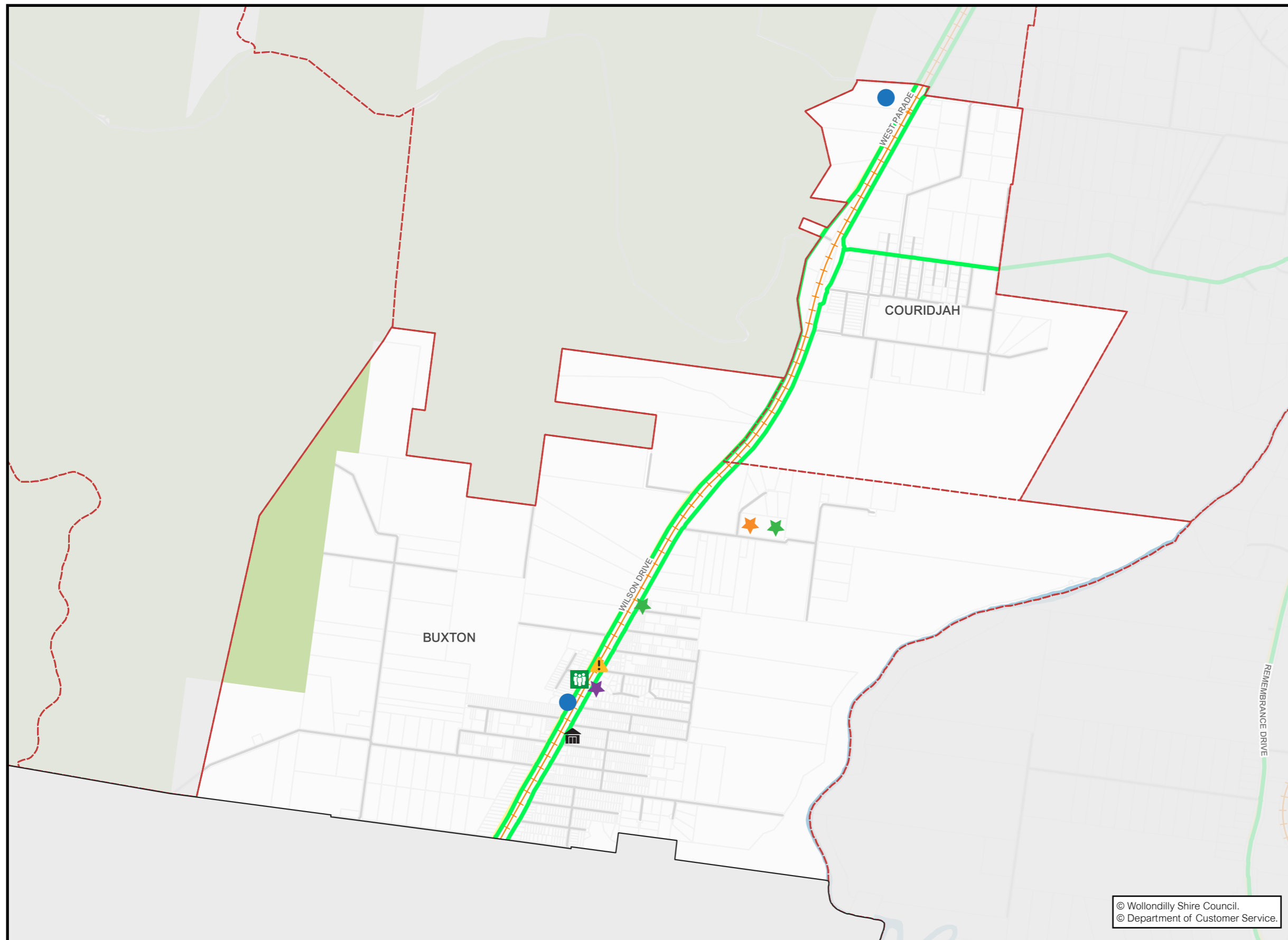


207
Born Overseas
(9.3%)



6
Non-English
Speaking
(0.3%)

AREA MAP



Legend

- Childcare Centres & Preschools
- Community Associations
- Council Assets
- Disaster/Emergency Services
- Private Animal Boarding Facilities
- Prominent Businesses
- Schools
- Sports Associations
- Evacuation Route
- Neighbourhood Safer Spaces

© Wollondilly Shire Council.
© Department of Customer Service.

A child wearing a floral hat is seen from behind, painting a large smiley face on a wall. The scene is overlaid with a teal-to-green gradient. The text 'AREAS & INFORMATION' is written in large, white, outlined letters across the center of the image.

AREAS & INFORMATION

DISASTER SERVICES	
Area	Information
All Areas	<p>Rural Fire Service - Bushfire Information Line - Ph: 1800 679 737</p> <p>Rural Fire Service Wollondilly District Office - Ph: 4677 7000</p> <p>Wollondilly State Emergency Service (SES) 65 Bridge Street, Picton, 2571 Ph: 132 500 Fb: https://www.facebook.com/NSWSESWDY</p>
Buxton	<p>Buxton Rural Fire Brigade West Parade, Buxton NSW 2571 Contact: Captain Peter Fenning - hfen@bigpond.com Fb: https://www.facebook.com/BuxtonRuralFireBrigade</p>
Couridjah	NIL

SCHOOLS	
Area	Information
Buxton	<p>Buxton Public School 31 Hassall Rd, Buxton NSW 2571 Ph: (02) 4681 8229 E: buxton-p.school@det.nsw.edu.au</p>
Couridjah	NIL

CHILDCARE SERVICES & PRESCHOOLS	
Area	Information
Buxton	<p>Little Possums Early Learning Centre 5 East Parade Buxton NSW 2571 Ph: (02) 4681 9759</p> <p>Big Childcare – Buxton Public School OSHC Buxton Primary School, 31 Hassall Road, Buxton NSW 2571 Ph: (03) 8682 9400 / 0492 275 842 E: buxton@bigchildcare.com</p>
Couridjah	NIL

SPORTS ASSOCIATIONS	
Area	Information
Buxton	<p>Buxton Netball Club Tahmoor Sports Ground, Thirlmere Way Tahmoor, NSW 2573 Ph: 0414 347 954 E: buxtonnetballclub@gmail.com Fb: https://www.facebook.com/BuxtonNetballClub/</p>
Couridjah	NIL

COMMUNITY ASSOCIATIONS	
Area	Information
Buxton	<p>Buxton Community Association 24 West Parade Buxton NSW 2571 (Community Hall) E: buxtoncommunityassociation@gmail.com Fb: http://www.facebook.com/BuxtonCommunityAssociation</p> <p>Buxton Community Garden 24 West Parade Buxton NSW 2571 (located behind Community Hall) Ph: 0415 748 590 E: buxtoncommunityassociation@gmail.com Fb: https://www.facebook.com/BuxtonCommunityGarden/</p> <p>Buxton Play Group 24 West Parade Buxton NSW 2571 (Community Hall) Ph: Nicole 0433 859 558 Fb: https://www.facebook.com/buxtonplaygroup/</p>
Couridjah	<p>Tharawal Local Aboriginal Land Council 220 West Parade, Couridjah NSW 2571 Ph: (02) 4681 0059 E: reception@tharawal.com.au Fb: https://www.facebook.com/TharawalLALC/</p>

PROMINENT BUSINESSES	
Area	Information
Buxton	<p>IGA Xpress Buxton 4/47-49 East Parade Buxton NSW 2571 Ph: (02) 4681 8663</p> <p>Australia Post 1/49 East Parade Buxton NSW 2571 Ph: (02) 46818922</p>
Couridjah	<p>Strawberry farm</p> <p>Picton Chamber of Commerce (incl surrounding suburbs) Fb: https://www.facebook.com/PictonChamberofCommerce</p> <p>Wollondilly Local Business Directory Fb: https://www.facebook.com/groups/1305777129542823/</p>

PRIVATE ANIMAL BOARDING FACILITIES	
Area	Information
Buxton	NIL
Couridjah	NIL

ONLINE FACEBOOK COMMUNITY FORUMS & PAGES	
Area	Information
All Areas	<p>Macarthur-Wollondilly Community Noticeboard Fb: https://www.facebook.com/groups/1653921468167893/</p> <p>Mayor Matt Gould Fb: https://www.facebook.com/CrMattGould</p> <p>Picton, Camden and surrounding suburbs Community Page Fb: https://www.facebook.com/groups/861602960581170</p> <p>Picton Wollondilly and Macarthur Community Noticeboard Fb: https://www.facebook.com/groups/745054278934576/</p> <p>What's Happening in Wollondilly Fb: https://www.facebook.com/groups/2853710421546044/</p> <p>Wollondilly Living Fb: https://www.facebook.com/groups/wollondillyliving/about/</p> <p>Wollondilly Community Living Fb: https://www.facebook.com/groups/973623299396093/</p> <p>Wollondilly Incidents & Alerts Fb: https://www.facebook.com/groups/wollondilly/</p> <p>Wollondilly Community Noticeboard Fb: https://www.facebook.com/groups/945217202158492/</p> <p>Wollondilly Life Fb: https://www.facebook.com/groups/200220494140376/</p> <p>Wollondilly Shire Council Fb: https://www.facebook.com/wollondilly</p>

COUNCIL ASSETS	
Area	Information
Buxton	<p>Telopea Park 57 Buxton Ave, Buxton NSW 2571</p>
Couridjah	NIL

NEIGHBOURHOOD SAFER SPACES	
Area	Information
Buxton	<p>Buxton Fire Shed West Parade, Buxton</p>
Couridjah	NIL



Wollondilly
Shire Council

www.wollondilly.nsw.gov.au