

Woolondilly Shire Council
 PO Box 21
 PICTON NSW 2571
 Ph: (02) 4677 1100
 Fax: (02) 4677 2339
 Web:
www.woolondilly.nsw.gov.au

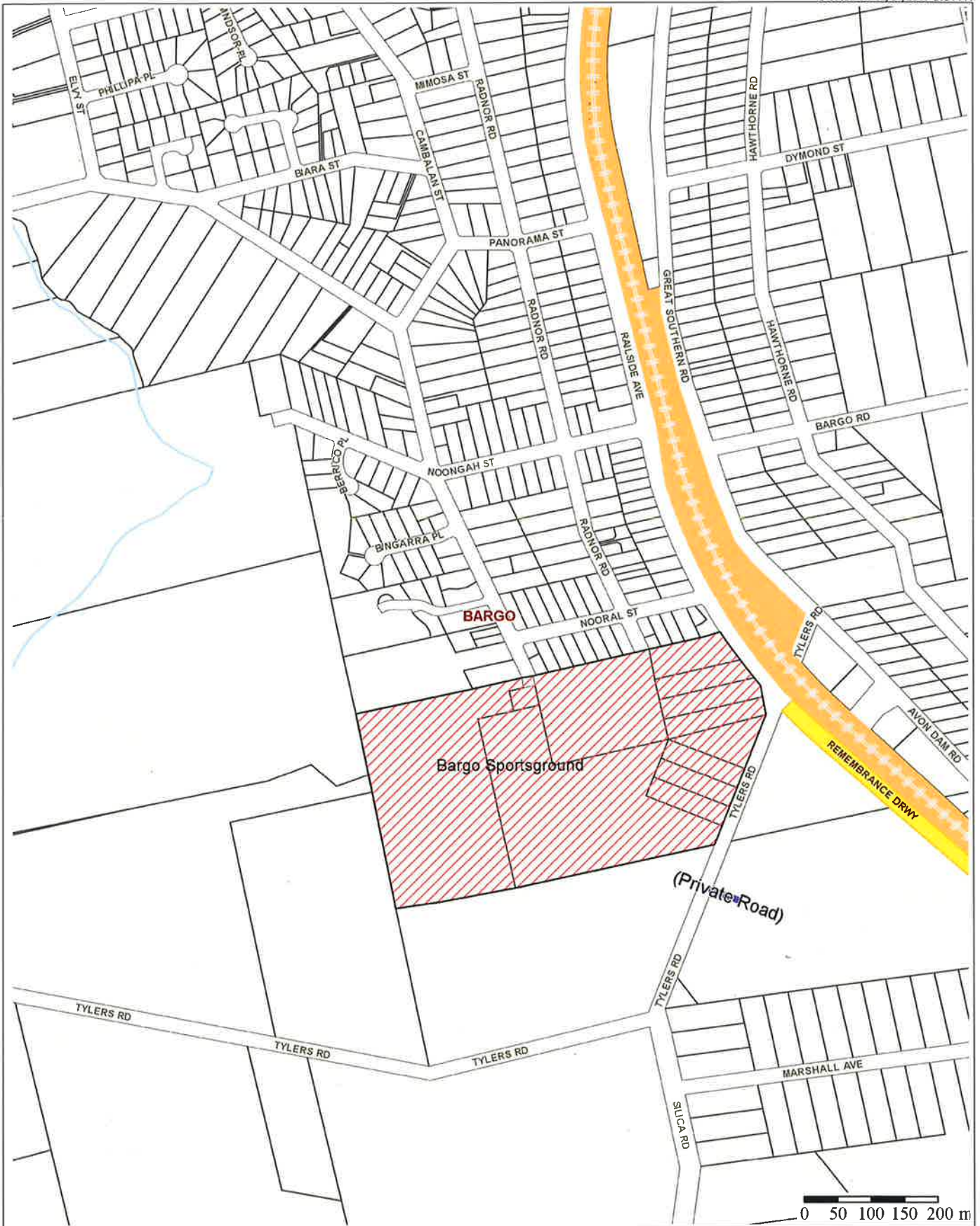
© Woolondilly Shire Council.
 © LPI Department of Finance and Services, Panorama Avenue, Bathurst, 2795. www.lpi.nsw.gov.au.
 While every care is taken to ensure the accuracy of this product, Woolondilly Shire Council and the Local / State / Federal Government departments and Non-Government organisations whom supply datasets, make no representations or warranties about its accuracy, reliability, completeness or suitability for any particular purpose and disclaims all responsibility and all liability (including without limitation, liability in negligence) for all expenses, losses, damages (including indirect or consequential damage) and costs which you might incur as a result of the product being inaccurate or incomplete in any way and for any reason.

Created By: Sharon Harbrett

Projection: GDA94 / MGA zone 56

Date: 12/04/2017 3:06 PM

Alcohol Prohibited Areas- Appin



Wollondilly Shire Council
 PO Box 21
 PKTON NSW 2571
 Ph: (02) 4677 1100
 Fax: (02) 4677 2539
 Web:
www.wollondilly.nsw.gov.au

© Wollondilly Shire Council
 © LPI Department of Finance and Services, Panorama Avenue, Bathurst, 2795. www.lpi.nsw.gov.au.
 While every care is taken to ensure the accuracy of this product, Wollondilly Shire Council and the Local / State / Federal Government departments and Non-Government organisations whom supply datasets, make no representations or warranties about its accuracy, reliability, completeness or suitability for any particular purpose and disclaims all responsibility and all liability (including without limitation, liability in negligence) for all expenses, losses, damages (including indirect or consequential damage) and costs which you might incur as a result of the product being inaccurate or incomplete in any way and for any reason.

Created By: Sharon Harbrett

Projection: GDA94 / MGA zone 56

Date: 12/04/2017 3:14 PM

Alcohol Prohibited Areas- Bargo



Wollondilly Shire Council
 PO Box 21
 PICTON NSW 2571
 Ph: (02) 4677 1100
 Fax: (02) 4677 2339
 Web: www.wollondilly.nsw.gov.au

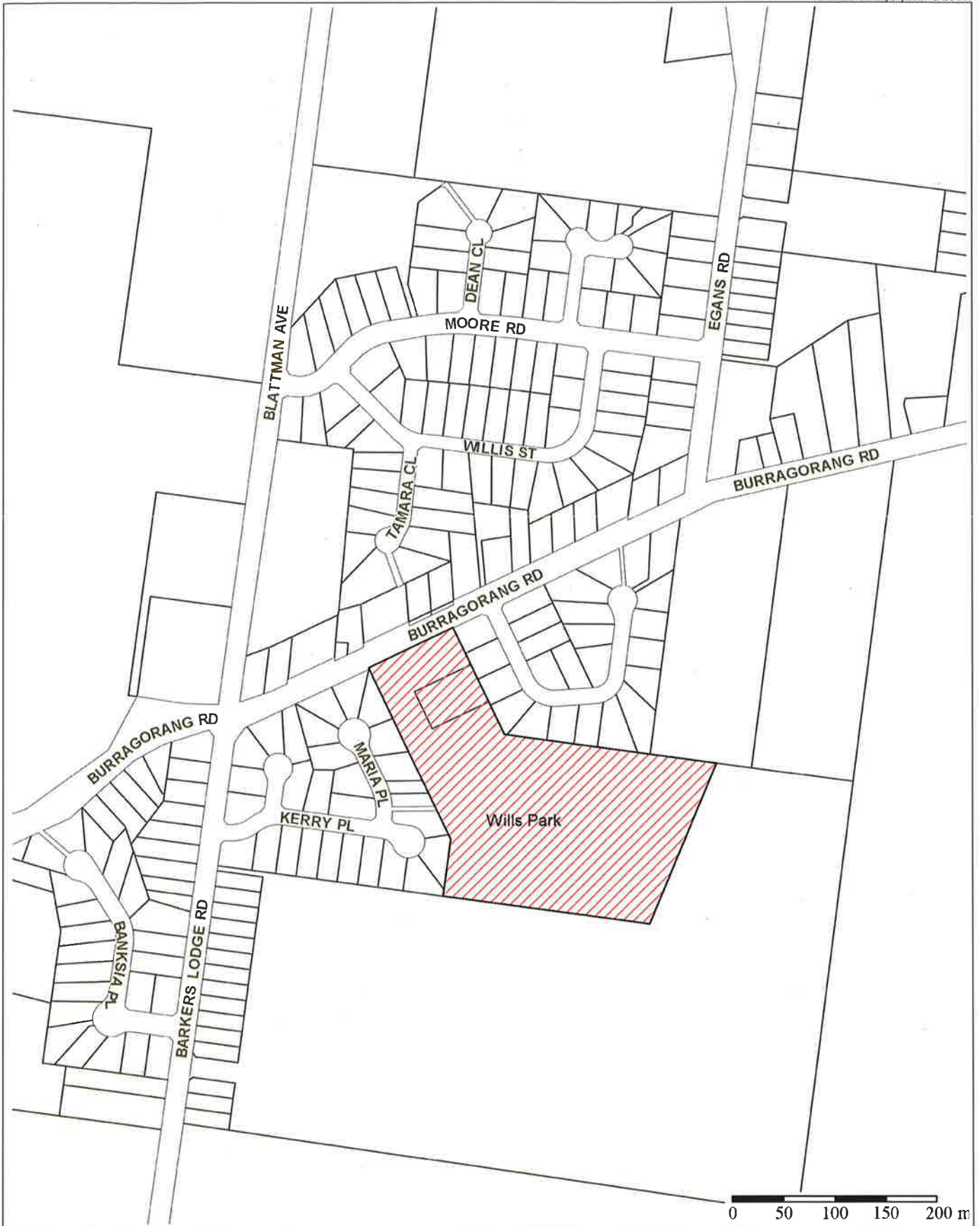
© Wollondilly Shire Council.
 © LPI Department of Finance and Services, Panorama Avenue, Bathurst, 2795. www.lpi.nsw.gov.au.
 While every care is taken to ensure the accuracy of this product, Wollondilly Shire Council and the Local / State / Federal Government departments and Non-Government organisations whom supply datasets, make no representations or warranties about its accuracy, reliability, completeness or suitability for any particular purpose and disclaims all responsibility and all liability (including without limitation, liability in negligence) for all expenses, losses, damages (including indirect or consequential damage) and costs which you might incur as a result of the product being inaccurate or incomplete in any way and for any reason.

Created By: Sharon Harbott

Projection: GDA94 / MGA zone 56

Date: 12/04/2017 3:17 PM

Alcohol Prohibited Areas- Douglas Park



Wollondilly Shire Council
 PO Box 21
 PICTON NSW 2571
 Ph: (02) 4677 1100
 Fax: (02) 4677 2339
 Web: www.wollondilly.nsw.gov.au

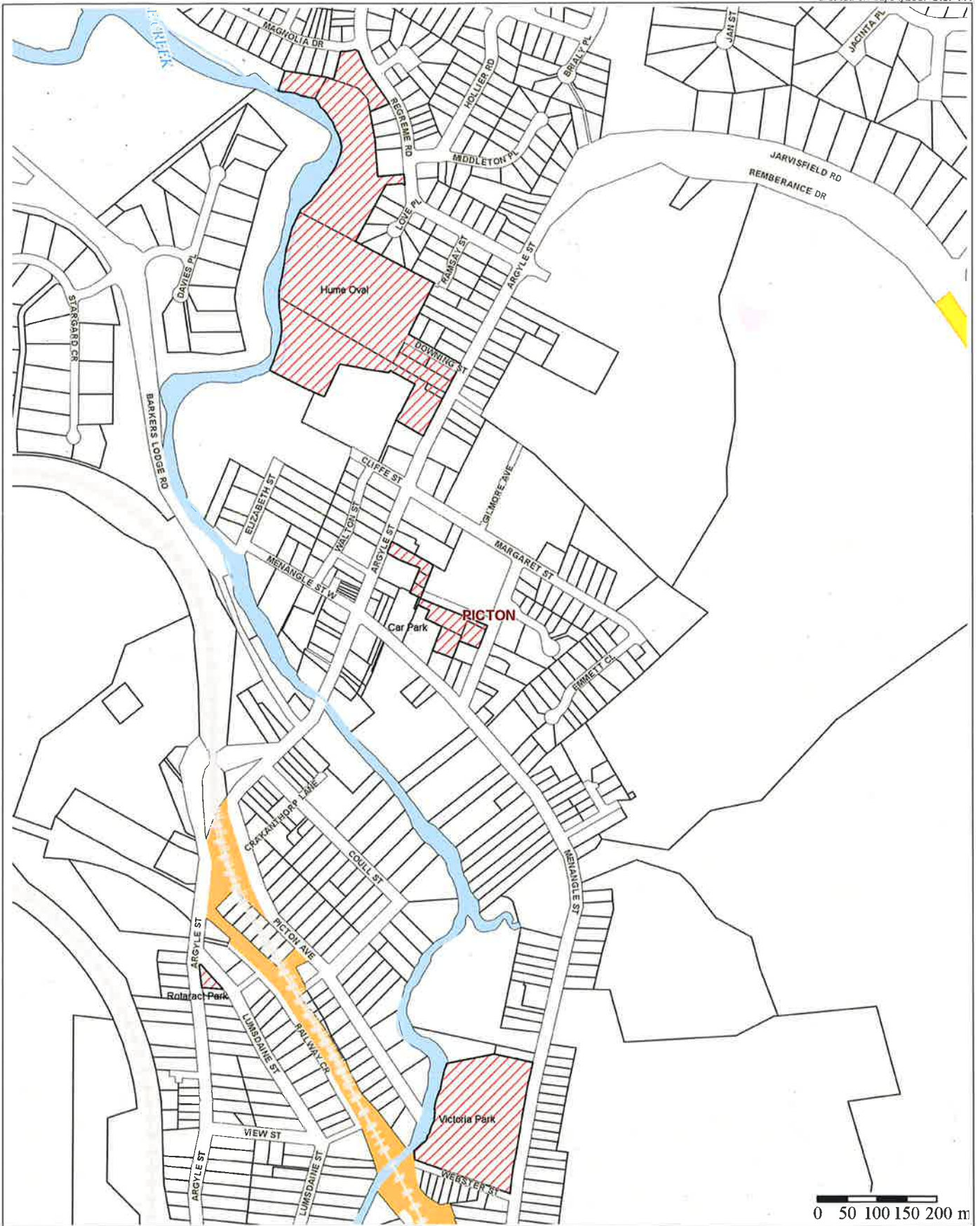
© Wollondilly Shire Council.
 © LPI Department of Finance and Services, Panorama Avenue, Bathurst, 2795. www.lpi.nsw.gov.au
 While every care is taken to ensure the accuracy of this product, Wollondilly Shire Council and the Local / State / Federal Government departments and Non-Government organisations whom supply datasets, make no representations or warranties about its accuracy, reliability, completeness or suitability for any particular purpose and disclaims all responsibility and all liability (including without limitation, liability in negligence) for all expenses, losses, damages (including indirect or consequential damage) and costs which you might incur as a result of the product being inaccurate or incomplete in any way and for any reason.

Created By: Sharon Martrell

Projection: GDA94 / MGA zone 56

Date: 12/04/2017 3:21 PM

Alcohol Prohibited Areas- Oakdale



Wollondilly Shire Council
 PO Box 21
 PICTON NSW 2571
 Ph: (02) 4677 1100
 Fax: (02) 4677 2339
 Web:
www.wollondilly.nsw.gov.au

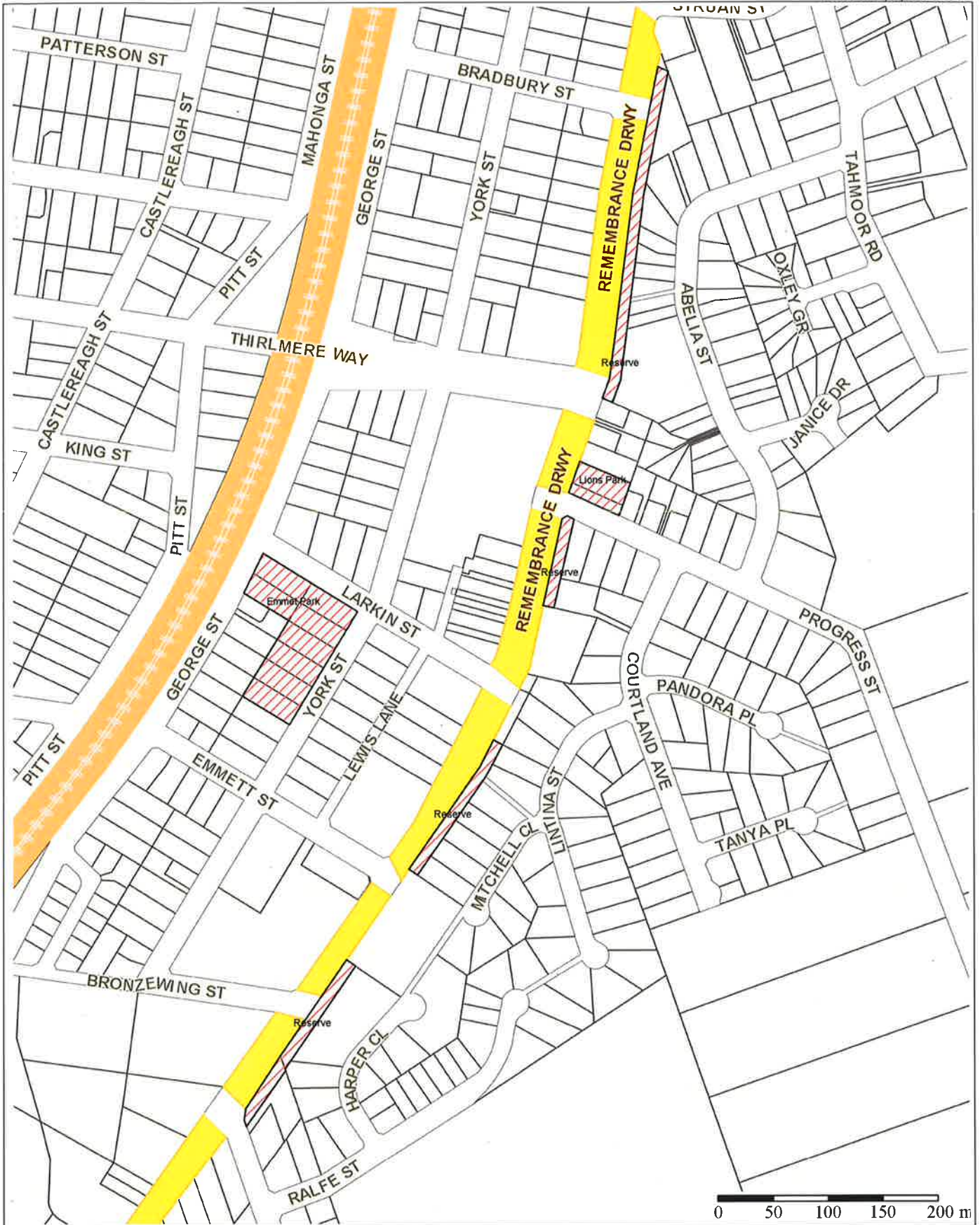
© Wollondilly Shire Council.
 © LPI Department of Finance and Services, Panorama Avenue, Bathurst, 2795. www.lpi.nsw.gov.au.
 While every care is taken to ensure the accuracy of this product, Wollondilly Shire Council and the Local / State / Federal Government departments and Non-Government organisations whom supply datasets, make no representations or warranties about its accuracy, reliability, completeness or suitability for any particular purpose and disclaims all responsibility and all liability (including without limitation, liability in negligence) for all expenses, losses, damages (including indirect or consequential damage) and costs which you might incur as a result of the product being inaccurate or incomplete in any way and for any reason.

Created By: Sharon Harbott

Projection: GDA94 / MGA zone 56

Date: 12/04/2017 3:07 PM

Alcohol Prohibited Areas- Picton



Wollondilly Shire Council
 PO Box 21
 PICTON NSW 2591
 Ph: (02) 4672 1100
 Fax: (02) 4672 2339
 Web:
www.wollondilly.nsw.gov.au

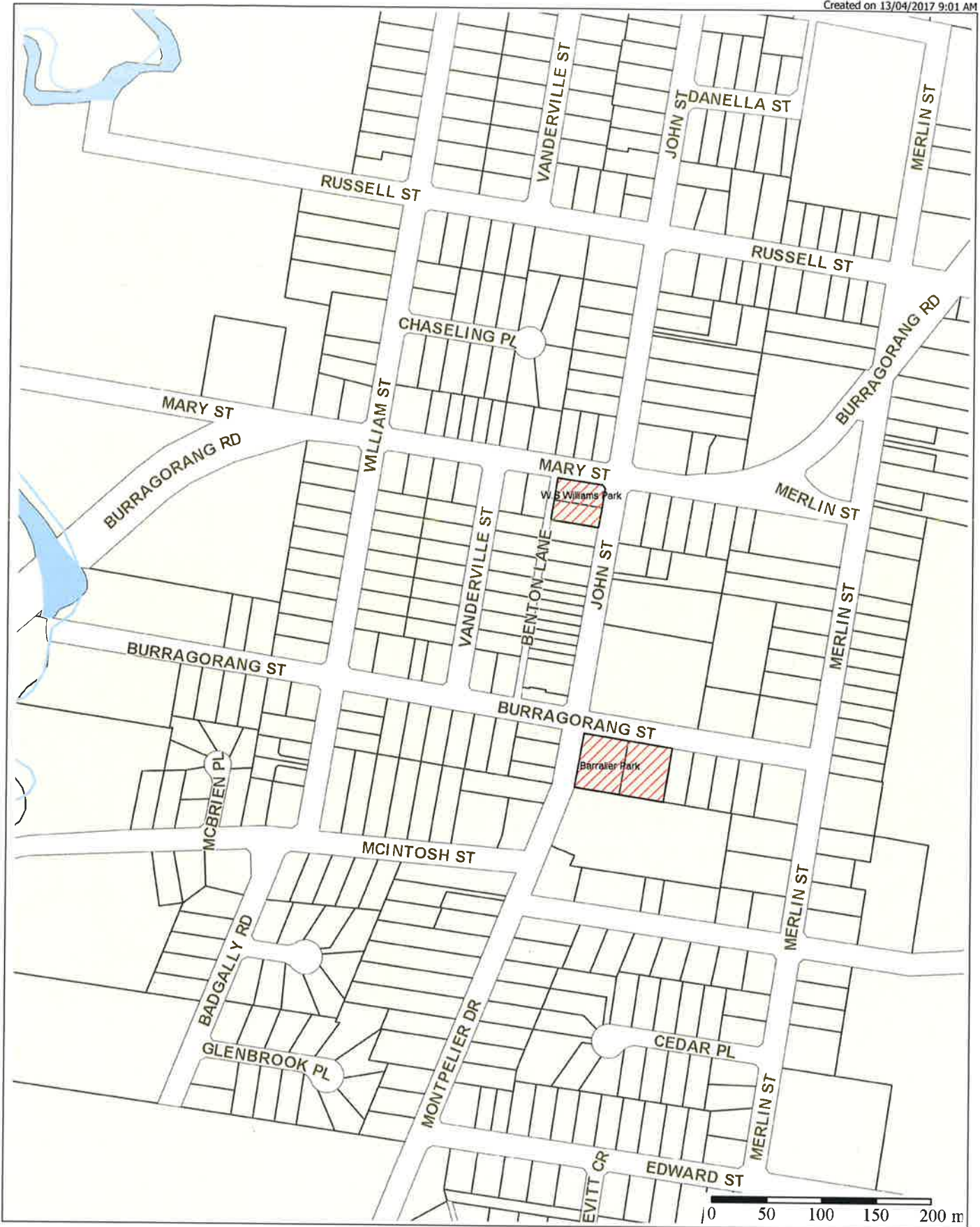
© Wollondilly Shire Council.
 © LPI Department of Finance and Services, Panorama Avenue, Bathurst, 2795. www.lpi.nsw.gov.au.
 While every care is taken to ensure the accuracy of this product, Wollondilly Shire Council and the Local / State / Federal Government departments and Non-Government organisations whom supply datasets, make no representations or warranties about its accuracy, reliability, completeness or suitability for any particular purpose and disclaims all responsibility and all liability (including without limitation, liability in negligence) for all expenses, losses, damages (including indirect or consequential damage) and costs which you might incur as a result of the product being inaccurate or incomplete in any way and for any reason.

Created By: Sharon Hartnett

Projection: GDA94 / MGA zone 56

Date: 12/04/2017 3:29 PM

Alcohol Prohibited Areas- Tahmoor



Wollondilly Shire Council
 PO Box 21
 DUCTON NSW 2571
 Ph: (02) 4677 1100
 Fax: (02) 4677 2339
 Web:
www.wollondilly.nsw.gov.au

© Wollondilly Shire Council.
 © LPI Department of Finance and Services, Panorama Avenue, Bathurst, 2795. www.lpi.nsw.gov.au.
 While every care is taken to ensure the accuracy of this product, Wollondilly Shire Council and the Local / State / Federal Government departments and Non-Government organisations whom supply datasets, make no representations or warranties about its accuracy, reliability, completeness or suitability for any particular purpose and disclaims all responsibility and all liability (including without limitation, liability in negligence) for all expenses, losses, damages (including indirect or consequential damage) and costs which you might incur as a result of the product being inaccurate or incomplete in any way and for any reason.

Created By: Sharon Harbott

Projection: GDA94 / MGA zone 56

Date: 13/04/2017 9:01 AM

Alcohol Prohibited Areas- The Oaks



Wollondilly Shire Council
 PO Box 21
 PICTON NSW 2571
 Ph: (02) 4677 1100
 Fax: (02) 4677 2339
 Web: www.wollondilly.nsw.gov.au

© Wollondilly Shire Council.
 © LPI Department of Finance and Services, Panorama Avenue, Bathurst, 2795. www.lpi.nsw.gov.au.
 While every care is taken to ensure the accuracy of this product, Wollondilly Shire Council and the Local / State / Federal Government departments and Non-Government organisations whom supply datasets, make no representations or warranties about its accuracy, reliability, completeness or suitability for any particular purpose and disclaims all responsibility and all liability (including without limitation, liability in negligence) for all expenses, losses, damages (including indirect or consequential damage) and costs which you might incur as a result of the product being inaccurate or incomplete in any way and for any reason.

Created By: Sharon Hartnett

Projection: GDA94 / MGA zone 56

Date: 3/05/2017 3:16 PM

Alcohol Prohibited Areas- Thirlmere



Wollondilly Shire Council
 PO Box 23
 PICCOLIN NSW 2571
 Ph: (02) 4677 1100
 Fax: (02) 4677 2339
 Web: www.wollondilly.nsw.gov.au

© Wollondilly Shire Council.
 © LPI Department of Finance and Services, Panorama Avenue, Bathurst, 2795. www.lpi.nsw.gov.au.
 While every care is taken to ensure the accuracy of this product, Wollondilly Shire Council and the Local / State / Federal Government departments and Non-Government organizations whom supply datasets, make no representations or warranties about its accuracy, reliability, completeness or suitability for any particular purpose and disclaims all responsibility and all liability (including without limitation, liability in negligence) for all expenses, losses, damages (including indirect or consequential damage) and costs which you might incur as a result of the product being inaccurate or incomplete in any way and for any reason.

Created By: Sharon Hartnett

Projection: GDA94 / MGA zone 56

Date: 3/05/2017 3:13 PM

Alcohol Prohibited Areas- Warragamba