



You are invited to attend the next Traffic Committee Meeting:

Date: Tuesday, 6 April 2021
Time: 14:00
Location: Council Chambers
62-64 Menangle Street
Picton NSW 2571 OR Via Microsoft
Teams

AGENDA

Traffic Committee Meeting

6 April 2021

Order Of Business

1 Reports 4

1.1 Picton Public School - Proposed 2 minute time restricted parking zone (r5-12) in front of the school on Argyle St..... 4

1.2 Argyle St / Margaret St / Cliffe St, Picton Traffic Light Intersection - Review of existing traffic zones on eastern side of Argyle St for southbound traffic 8

1.3 Signage and line marking for No Right Turn off Menangle Road, Menangle..... 12

1.4 Production Ave, Warragamba approaching Warradale Rd intersection - Request for Transverse Road Markings (Speed awareness bars)..... 17

2 General Business..... 19

No reports this meeting

1 REPORTS

1.1 PICTON PUBLIC SCHOOL - PROPOSED 2 MINUTE TIME RESTRICTED PARKING ZONE (R5-12) INFRONT OF THE SCHOOL ON ARGYLE ST

File Number: 10623#179

EXECUTIVE SUMMARY

Proposed 2 minute time restricted parking zone (R5-12) in front of Picton Public School on Argyle St to provide prolong parking for Accessible Parking Permit holders.

RECOMMENDATION

That the Local Traffic Committee

1. Approve 12m of 2 minutes time restricted parking zone (R5-12) within the southern end
 - of the existing parking zone in front of Picton Public School on Argyle St.
 - The time restrictions are:
 - 8:00 – 9:30 am & 2:30 – 4:00pm School Days

REPORT

Council has continually received requests from parents for accessible parking to gain access into the school.

There is an existing time restricted parking zone in front of the school, however this only allows parking up to 2 minutes and requires the driver to stay within 3m of the vehicle.

As an alternative solution for accessible parking permit holders, it is proposed to implement 12m of 2 minute time restricted parking zone (R5-12) within the existing 'No Parking zone' at the southern end of Argyle St. This will accommodate 2 parking spaces and enable accessible parking permit holders up to 30 mins to accompany the child into the school.

However, it is worth noting that this is a public parking zone and therefore, it can be utilised by any motorist on the first come, first basis.

Consultation

Picton Public School has been invited for comments.

Financial Implications

Funding has been allocated and is available under vote 4402-5210-3627.

ATTACHMENTS

1. Parking Rules - Aerial Map - Street View

- Licence
- News
- Registration
- Bicycles
- Safety & rules
- Using roads
 - Alpha Numeric route numbers
 - Buses
- Mobility Parking Scheme
 - Permits
 - Eligibility
 - Displaying your permit
 - Using your permit
 - Where can I get special parking conditions?
 - Interstate and overseas
 - Conditions of use
 - Misuse of permits
 - Fees and concessions
 - Information for health professionals
 - Frequently asked questions
 - Forms and documents
- Motorways & tolling
- Road access and usage
- Roadside tributes
- Sydney tunnels
- Towed cars & other vehicles

Home ▶ Roads ▶ Using roads ▶ Mobility Parking Scheme ▶ Using your permit

▶ Where can I get special parking conditions?

Where can I get special parking conditions?

The special parking conditions are only available for on-street parking and council operated car parks.

Privately operated car parks

Car parks that operate behind boom gates are privately operated. There are no parking concessions in these areas.

To park in a designated disability parking space within a private car park, you must display your valid permit and pay any fees required by the car park operator.

Private car parks operate under rules determined by the private operator, and enforcement of these rules is the responsibility of designated authorised officers.

Designated disability parking spaces

Parking spaces and signs that show the symbol for people with disabilities are for the use of vehicles displaying valid permits only.

For all other vehicles, the disability symbol has the same effect as a 'No Stopping' sign.

Time limited parking areas

Permit holders can park in time limited parking areas for longer time periods.

Signposted time limit	Disability parking time limit
More than 30 minutes	Unlimited
30 minutes	Up to 2 hours
Less than 30 minutes	Maximum 30 minutes

Metered, coupon or ticket parking areas





1.2 ARGYLE ST / MARGARET ST / CLIFFE ST, PICTON TRAFFIC LIGHT INTERSECTION - REVIEW OF EXISTING TRAFFIC ZONES ON EASTERN SIDE OF ARGYLE ST FOR SOUTHBOUND TRAFFIC

File Number: 10623#180

EXECUTIVE SUMMARY

Request to review existing traffic zones on eastern side of Argyle St for southbound traffic at the traffic light intersection of Argyle St / Margaret St/ Cliffe St, Picton.

RECOMMENDATION

That the Local Traffic Committee:

1. To review existing traffic zones on eastern side of Argyle St for southbound traffic with the view of improving traffic flow noting its likely to have a negative impact on on-street parking

REPORT

Council has received requests to mitigate the congestion at the traffic light intersection of Argyle St / Margaret St / Cliffe St for southbound traffic, particularly during peak hour traffic flow.

There are two southbound lanes on Argyle St on approach to the traffic light. However, the kerbside lane has a time-restricted 1P parking zone (8:30am - 6pm M-F & 8:30 - 12:30pm Sat) which renders the left lane unusable when there are parked cars. On this kerbside lane, the clear zone (No Stopping) is only 12m long from the traffic light and the adjoining 1P parking zone is about 22m long. This short clear zone implemented with the intention to minimise loss of parking to the adjacent commercial businesses in response to feedback received during public consultation phase.

Unfortunately, the traffic flow on this kerbside lane is severely impacted not only by parked vehicles but also from vehicles manoeuvring into the kerbside parking thus obstructing traffic behind them.

There are 2 feasible options to minimise congestion and improve the traffic flow at this location:

1. Consider extending the existing No Stopping (r5-400) zone by curtailing the existing 1P Parking zone to suit
2. Consider making the existing 1P Parking zone an AM (7am – 9am) and PM (4pm – 6pm) Clearway (r5-215). This will have minimal interference with the existing 1P parking zone for nearby commercial businesses.

Consultation

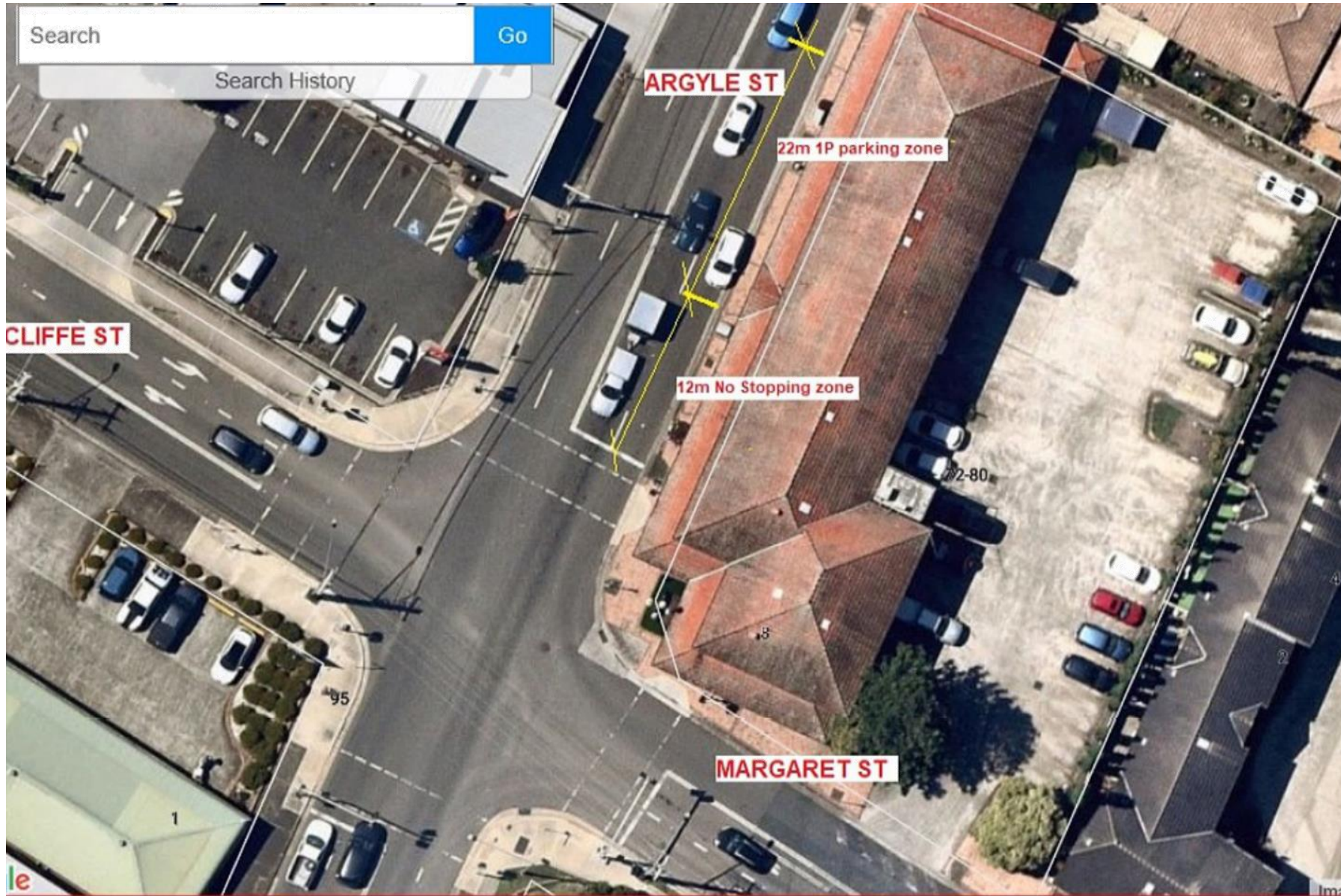
This issue has not been raised and discussed in the Community Forum.

Financial Implications

Funding has been allocated and is available under vote 4402-5210-3627

ATTACHMENTS

1. Existing Traffic zone - Street View - Clear Zone (R5-215) sign





	CLEARWAY	r5-650	600 x 750 mm
---	----------	------------------------	-----------------

	CLEARWAY (AM) repeater	r5-215	450 x 225 mm
---	------------------------------	------------------------	-----------------

1.3 SIGNAGE AND LINE MARKING FOR NO RIGHT TURN OFF MENANGLE ROAD, MENANGLE**File Number: 10623#181****EXECUTIVE SUMMARY**

Council has recently approved a residential subdivision at 15 Menangle Road, Menangle to create 95 residential lots. The subdivision creates a new intersection off Menangle Road, Station Street and Stevens Road.

Council is seeking endorsement from the Local Traffic Committee to implement line marking and road signage in line with the development consent.

RECOMMENDATION

That the Local Traffic Committee:

1. Approve line marking and signage for the No Right Turn off Menangle Road.

REPORT

The No Right turn off Menangle Road is to minimise the impact on the significant volume of north bound traffic, reduce road widening and services relocations.

Access for vehicles from the south and west will be from the new intersection off Station St, which is being developed as a main entry to the subdivision, and is also the shortest route for vehicles from the south and west.

To provide greater ease of vehicles entry onto Menangle Road the new intersection is being developed with a separate lane for right and left turns.

Consultation

Consultation has occurred between the developer MIRVAC and Council's Infrastructure Planning Section

Financial Implications

There are no financial implications.

ATTACHMENTS

1. PLANS- MENANGLE ROAD

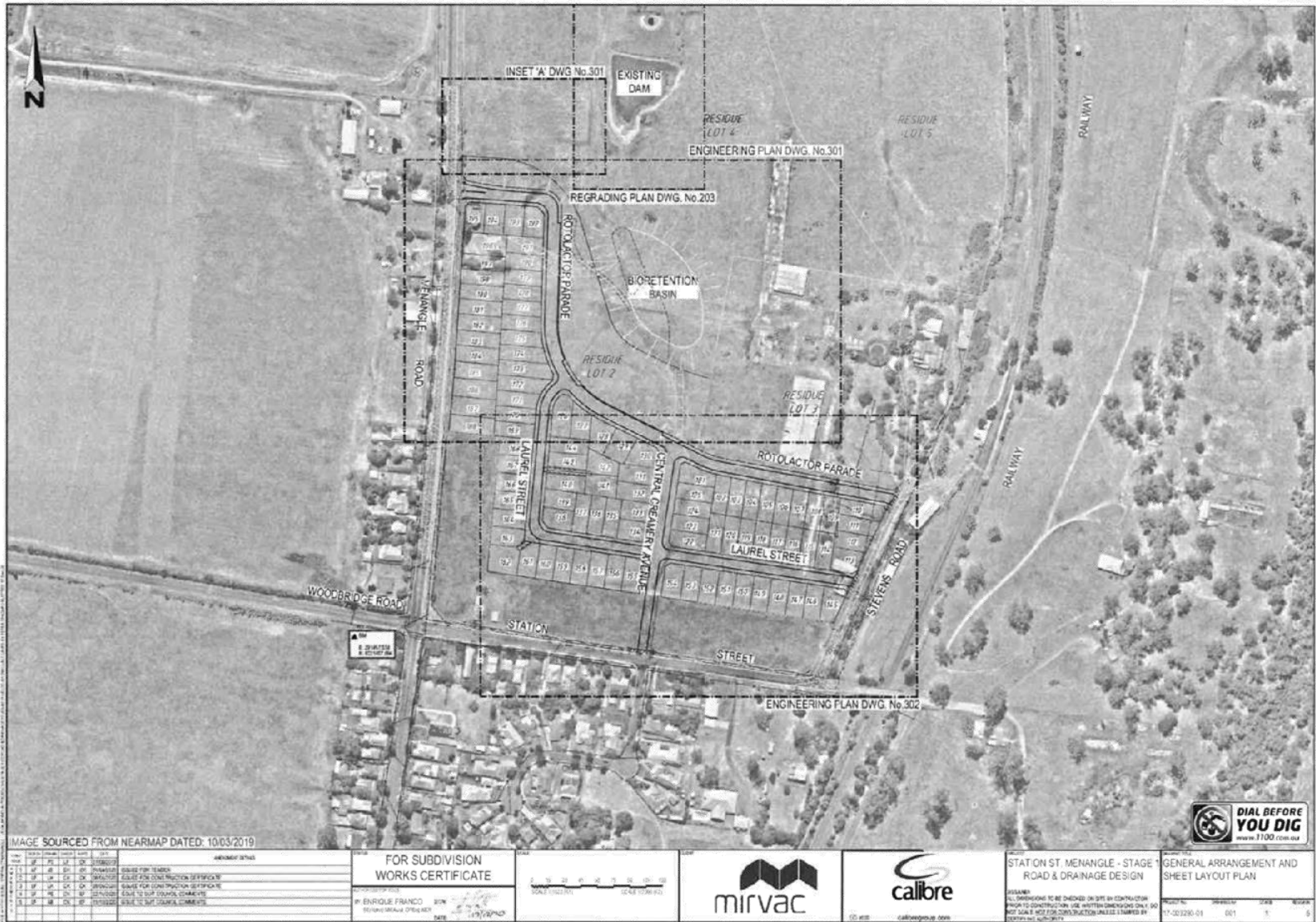
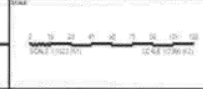


IMAGE SOURCED FROM NEARMAP DATED: 10/03/2019

NO.	DATE	BY	FOR	REVISIONS
1	10/03/2019	ENR	ENR	ISSUED FOR TENDERS
2	10/03/2019	ENR	ENR	ISSUED FOR CONSTRUCTION CERTIFICATE
3	10/03/2019	ENR	ENR	ISSUED FOR CONSTRUCTION CERTIFICATE
4	10/03/2019	ENR	ENR	ISSUED FOR CONSTRUCTION CERTIFICATE
5	10/03/2019	ENR	ENR	ISSUED FOR CONSTRUCTION CERTIFICATE

FOR SUBDIVISION WORKS CERTIFICATE

ENR ENRIQUE FRANCO 3004
 ENR ENRIQUE FRANCO 3004

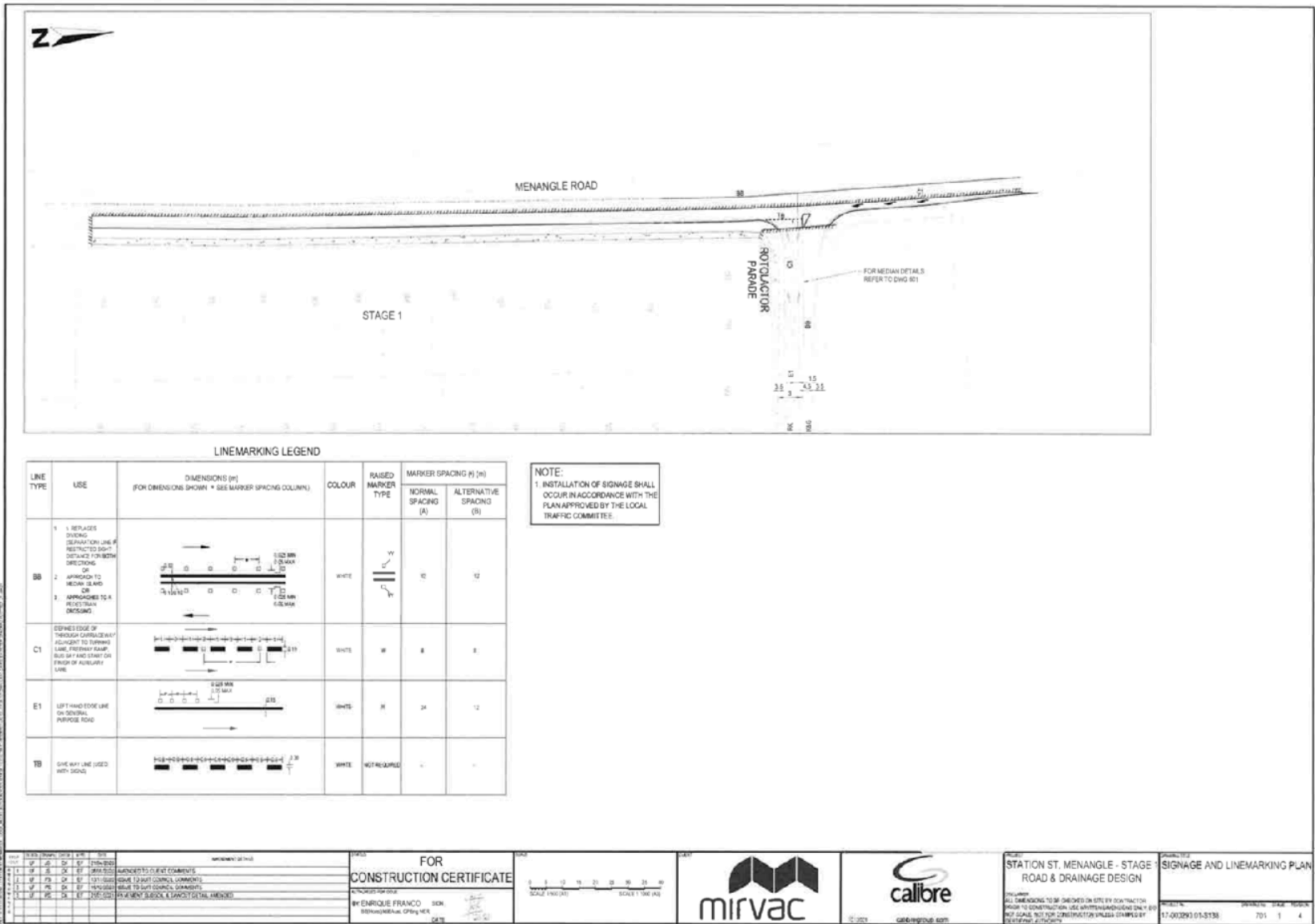


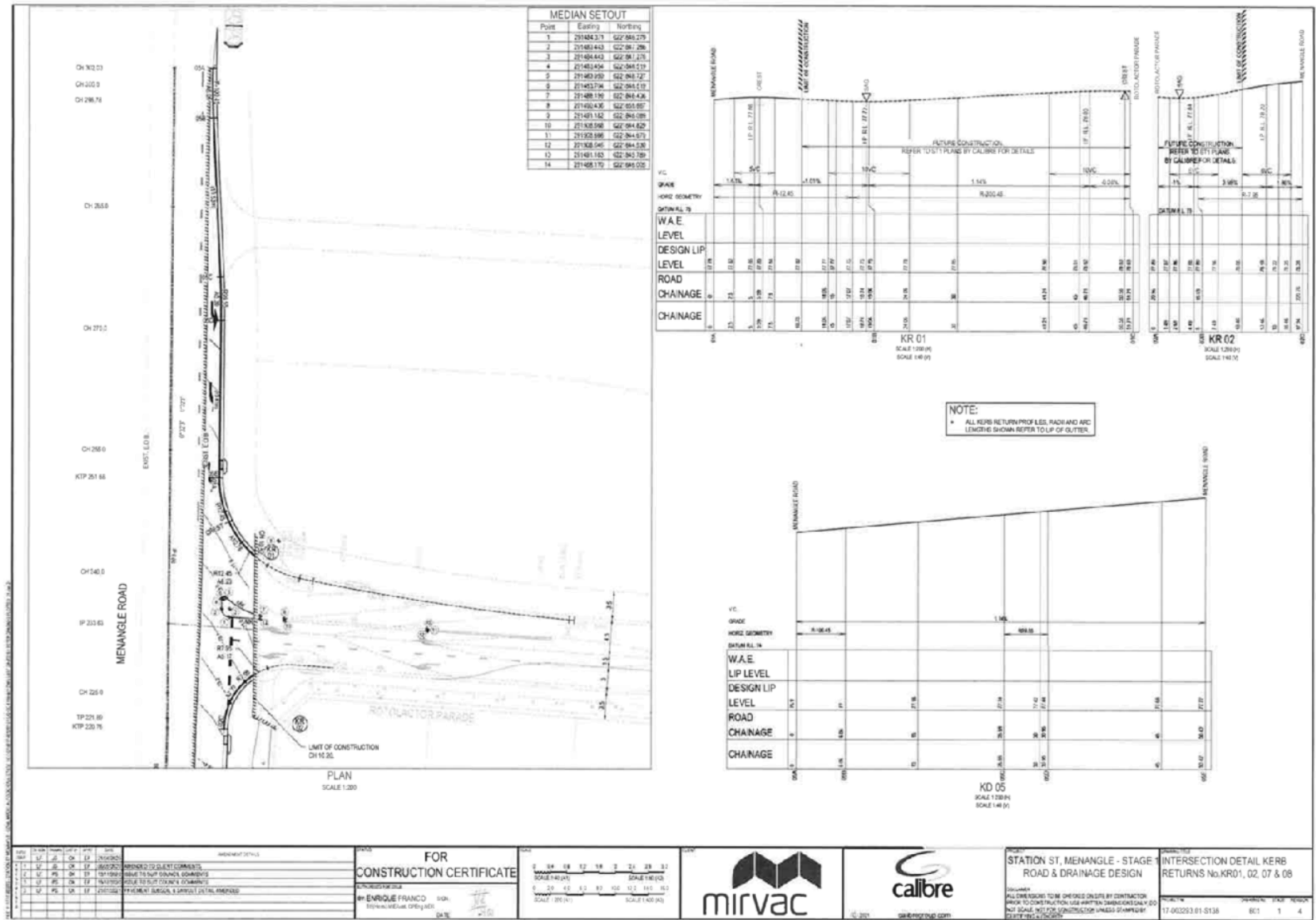
STATION ST. MENANGLE - STAGE 1
 ROAD & DRAINAGE DESIGN

ISSUES:
 ALL DIMENSIONS TO BE CHECKED ON SITE BY CONTRACTOR
 PRIOR TO CONSTRUCTION. USE WRITTEN DIMENSIONS ONLY. DO
 NOT SCALE & USE FOR CONSTRUCTION UNLESS STAMPED BY
 CONTRACTOR. 10/03/2019

GENERAL ARRANGEMENT AND SHEET LAYOUT PLAN

PROJECT NO: 17-001290-01
 SHEET NO: 001 OF 5





1.4 PRODUCTION AVE, WARRAGAMBA APPROACHING WARRADALE RD INTERSECTION - REQUEST FOR TRANSVERSE ROAD MARKINGS (SPEED AWARENESS BARS)

File Number: 10623#182

EXECUTIVE SUMMARY

This report is to request the implementation of transverse road markings (speed awareness bars) on Production Ave, Warragamba approaching Warradale Rd intersection as a speed mitigation device.

RECOMMENDATION

That the Local Traffic Committee:

- 1 Approves the implementation of transverse road markings (speed awareness bars – 300mm wide) on Production Ave, Warragamba approaching Warradale Rd intersection as shown on the attachment of this report.

REPORT

Council has frequently received public safety concern of vehicles travelling along Production Ave crossing Warradale Rd at an excessive speed and at times ignoring the existing Stop Sign (R1-1) control.

Warradale Rd and Production Ave are classified as major collector roads connecting Warragamba Township and Warragamba Dam. The speed zone on Warradale Rd is 60kph while Production Ave is 50kph (UDSL). Traffic volume can be high when visitors come to the Warragamba Dam picnic area.

In addition, the new subdivision within the former “Lion Park” area leads to an increase in local population and traffic growth.

The intersection has a formal Stop sign (R1-1 control) with ample warning signs approaching the intersection.

As additional speed mitigation to slow down approaching traffic speed to this intersection, Council is proposing to install transverse road markings (speed awareness bars) on Production Ave, Warragamba approaching Warradale Rd intersection. This will;

1. Allow the driver the sense of acceleration through an optical illusion in the driver’s visual field.
2. Act as a large warning device, which is difficult for a driver to ignore.

Consultation

The issue has not been raised and discussed in the community forum.

Financial Implications

Funding has been allocated and is available under vote 4402-5210-3627

ATTACHMENTS

1. **Transverse marking plan layout**



2 GENERAL BUSINESS

No reports this meeting