



Traffic Committee Meeting

AGENDA

Date: Tuesday 7 May 2024

Time:

Location: Meeting held electronically via email

Order of Business

1 Acknowledgment of Country	3
2 Apologies and Leave of Absence Requests	3
3 Declaration of Interests	3
4 Reports	3
4.1 Traffic Management - Finns Road, between Woodbridge Road and Menangle Road, Menangle - Removal of load limit restriction.....	3
5 General Business	6
6 Closure of Meeting	6

1 ACKNOWLEDGMENT OF COUNTRY

The Chair will acknowledge the traditional Custodians of the Land.

2 APOLOGIES AND LEAVE OF ABSENCE REQUESTS

3 DECLARATION OF INTERESTS

4 REPORTS

4.1 TRAFFIC MANAGEMENT - FINNS ROAD, BETWEEN WOODBRIDGE ROAD AND MENANGLE ROAD, MENANGLE - REMOVAL OF LOAD LIMIT RESTRICTION

Directorate: Shire Futures

EXECUTIVE SUMMARY

That the existing 'No Trucks 15t and Over' load limit restrictions on Finns Road between Woodbridge Road and Menangle Road, Menangle be removed.

RECOMMENDATION

That the existing 'No Trucks 15T and Over' load limit restriction on Finns Road between Woodbridge Road and Menangle Road, Menangle be removed.

REPORT

Street Name	Finns Road	Latitude	-34.131911
Suburb	Menangle	Longitude	150.708134
Ward	North	Road Class (admin)	Local
SED	Wollondilly	PAC	Camden

The council has the power to limit the mass of vehicles on our roads and bridges pursuant to the ROAD TRANSPORT (GENERAL) REGULATION 2021 - REG 163, Mass requirements on certain roads and bridges.

Load limits are applied to roads and bridges to protect road pavement and bridge structures to ensure safety and reliability for road users. These load limits help to minimise the damage that can be caused by overloaded or heavy vehicles.

We impose suitable load limits to control the risk of overloaded bridge structures from heavy vehicles to preserve roads and bridges, ensure safety for road users, and maintain access for road users.

Finns Road has been upgraded and the load limit restriction is no longer needed.

Council has reviewed the need for mass limits and recommends the removal of the loads Limits

Following the recommendation and adoption of the minutes, Council will arrange for:

- Removal of the signs
- Update Council's register of roads with Load Limits


CONSULTATION

No Consultation was undertaken as part of this review.

FINANCIAL IMPLICATIONS

This matter has no financial impact on Council's adopted budget or forward estimates.

REPORT DETAILS

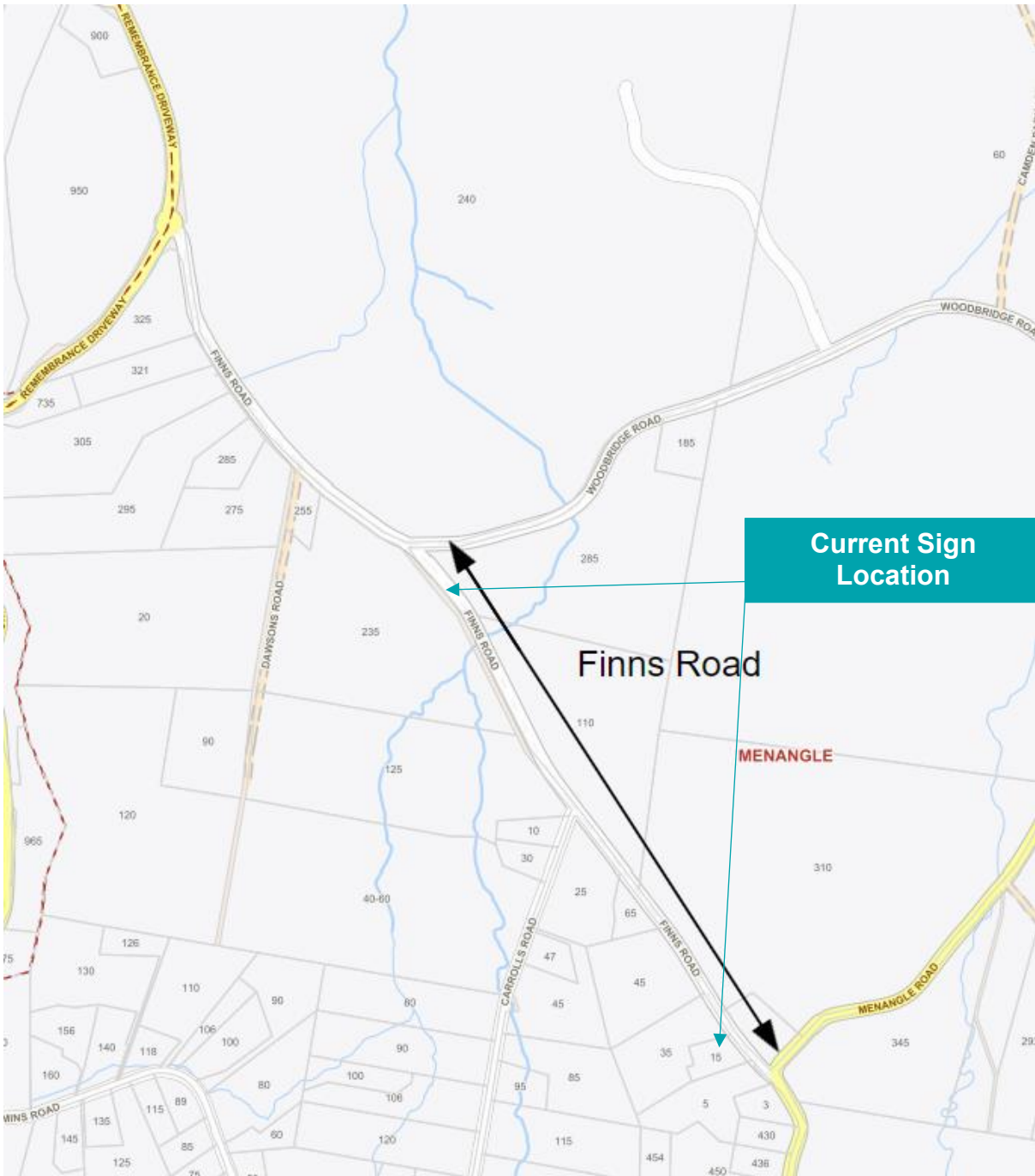
Prepared by:	Peter Nunn 10/04/2024	Infrastructure Coordinator	
---------------------	--------------------------	----------------------------	---

ATTACHMENTS

Location map

LOCATION

Finns Road Menangle - between Woodbridge Road and Menangle Road.



5 GENERAL BUSINESS

6 CLOSURE OF MEETING