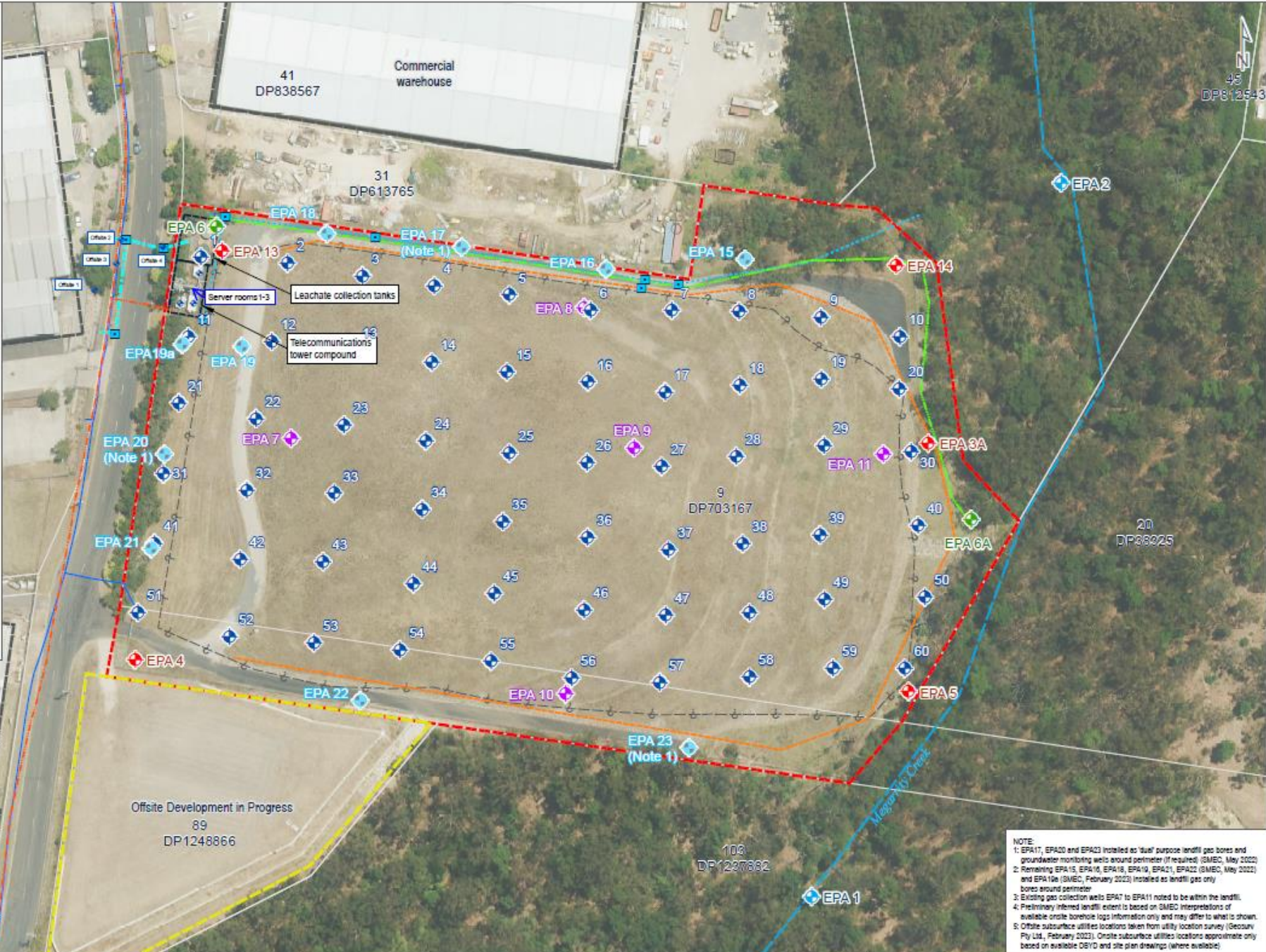


- LEGEND**
- Site Location
  - Cadastre
  - Preliminary Inferred Landfill Extent (see note 4)
  - Offsite Buildings
  - Onsite Structures
  - Offsite Development in Progress
- Groundwater and Surface Water Monitoring Locations**
- ◆ Groundwater Monitoring Location
  - ◆ Surfacewater Monitoring Location
  - ◆ Leachate Monitoring Location
- Landfill Gas Monitoring Locations**
- ◆ Gas collection wells – Monitoring not mandatory
  - ◆ Surface Gas
  - ◆ Subsurface Gas - Perimeter Bores
- Approximate Subsurface Utilities Locations (see note 5)**
- Leachate pipeline (onsite)
  - Gas trench (onsite)
  - - - Stormwater (onsite)
  - - - Stormwater (offsite)
  - - - Communications (offsite)
  - - - Electricity (offsite)
  - Water Main
  - Stormwater Pits



**NOTE:**

- 1: EPA17, EPA20 and EPA23 installed as 'dual' purpose landfill gas bores and groundwater monitoring wells around perimeter (if required) (SMEC, May 2022)
- 2: Reinstalling EPA15, EPA16, EPA18, EPA19, EPA21, EPA22 (SMEC, May 2022) and EPA19a (SMEC, February 2023) installed as landfill gas only bores around perimeter
- 3: Existing gas collection wells EPA7 to EPA11 noted to be within the landfill.
- 4: Preliminary inferred landfill extent is based on SMEC interpretations of available onsite borehole logs information only and may differ to what is shown.
- 5: Offsite subsurface utilities locations taken from utility location survey (Secour Pty Ltd, February 2023). Onsite subsurface utilities locations approximate only based on available DFD and site plan drawings (where available).

<b>FIG NO. 2</b>	<b>FIGURE TITLE</b> Site Map and Monitoring Locations
<b>PROJECT NO.</b> 30012992	<b>PROJECT TITLE</b> Warragamba Waste Management Centre

<b>DATE</b> 03/03/2023		<b>PAGE SIZE</b> A3	<b>COORDINATE SYSTEM</b> GDA 1994 MGA Zone 56
<b>CREATED BY</b> FA13847	<b>SOURCES</b> Roadnet MDS 2020, MetroMap Imagery © Aerometrex Pty Ltd		

© SMEC Australia Pty Ltd 2023.  
All Rights Reserved

Disclaimer: While all reasonable care has been taken to ensure the information contained on this map is up to date and accurate, this map contains data from a number of sources - no warranty is given that the information contained on this map is free from error or omission. Any reliance placed on such information shall be at the sole risk of the user. Please verify the accuracy of all information prior to using it. This map is not a design document.

**SMEC**  
Member of the Sustaina Group