



ASSET MAPPING & COMMUNITY PROFILES PROJECT

THIRLMERE | LAKESLAND

2023



Acknowledgement^{*}

Wollondilly Shire Council acknowledges the traditional custodians of the land in Wollondilly, the Dharawal and Gundungurra peoples.

We acknowledge the living culture and spiritual connections to the land for the Dharawal and Gundungurra people and all Aboriginal Nation Groups that may have connections to the area; and that Wollondilly is remarkably placed as the intersection of many tribal lands.

We recognise the traditional Custodians who have occupied and cared for this Country over countless generations and celebrate their continuing contributions to the Shire.

We also acknowledge and remember the Dharawal and Gundungurra peoples who were killed in the Appin Massacre on 17 April 1816.

**We acknowledge our continuing collaboration with the Tharawal Local Aboriginal Land Council*

CONT

ENTS

Acknowledgement of Country	3
About Wollondilly Shire	7
Population Data	9
Wollondilly Shire Map	10
Emergency Services	13
Council Assets	13
Public Transport	14
Medical Facilities & Pharmacies	14
Neighbourhood Safer Spaces	15
About Silverdale, Wallacia & Warragamba	16
Population Data	19
Area Map	20
Areas & Information	22
Disaster Services	24
Schools	24
Childcare Services & Preschools	25
Sports Associations	25
Community Associations	26
Prominent Businesses	26
Private Animal Boarding Facilities	27
Council Assets	27
Neighbourhood Safer Spaces	27
Online Facebook Community Forums & Pages	29



A map of Wollondilly Shire, Australia, showing various towns and villages. The map is overlaid on a green-to-teal gradient background. The towns labeled include Wallactia, Warragamba, Silverdale, Werombi, Theresa Park, Orangeville, Brownlow Hill, Glenmore, The Oaks, Mount Hunter, Cawdor, Camden Park, Menangle, Razorback, Mowbray Park, Picton, Douglas Park, Appin, Lakesland, Thirlmere, Maldon, Tahmoor, Couridjah, Buxton, Pheasants Nest, Wilton, Bargo, and Yanderra. The title 'WOLLONDILLY SHIRE' is written in large, white, sans-serif capital letters across the top half of the map.

WOLLONDILLY SHIRE

WOLLONDILLY

The Wollondilly Shire Local Government Area (LGA) has many unique towns and villages, ranging from Warragamba in the north to Yanderra in the south. The Shire is a large rural area that offers beautiful landscapes and has a strong sense of community spirit.

In 2019/20, the community of Wollondilly was significantly impacted by the Green Wattle Creek bushfire, resulting in the loss of private homes, wildlife, facilities, and hectares of National Park bushland. Following this tragic event, the community faced additional challenges with storm events and flood damage, exacerbating the strain on the community.

In consultation with residents, response agencies, and key stakeholders, Wollondilly Shire Council developed the Activate Wollondilly 2021: Long-Term Recovery and Resilience Plan. This plan aims to assist the community through recovery and resilience building, and it identifies key strategies to support and guide the recovery process.

Asset Mapping was identified as a key strategy to support the implementation of the plan. This document is designed to highlight and inform the community about the facilities and groups available in their local area that can provide help in times of need.

Please Note:

- It is the responsibility of the RFS to identify and communicate evacuation points accordingly during an emergency. These points are often Community Assets and Council will work with the RFS to support accurate communication to the community.
- Evacuation Routes can change during an emergency. It is important to seek current RFS information before taking action.

Population Data

WOLLONDILLY



A population of
54,176 people
in total

27,032
Male (50.1%)



26,931
Female (49.9%)



2,364
Indigenous (4.4%)



5,552
Seniors (70+ Years)
(10.3%)



3,165
Employed
(97.6%)

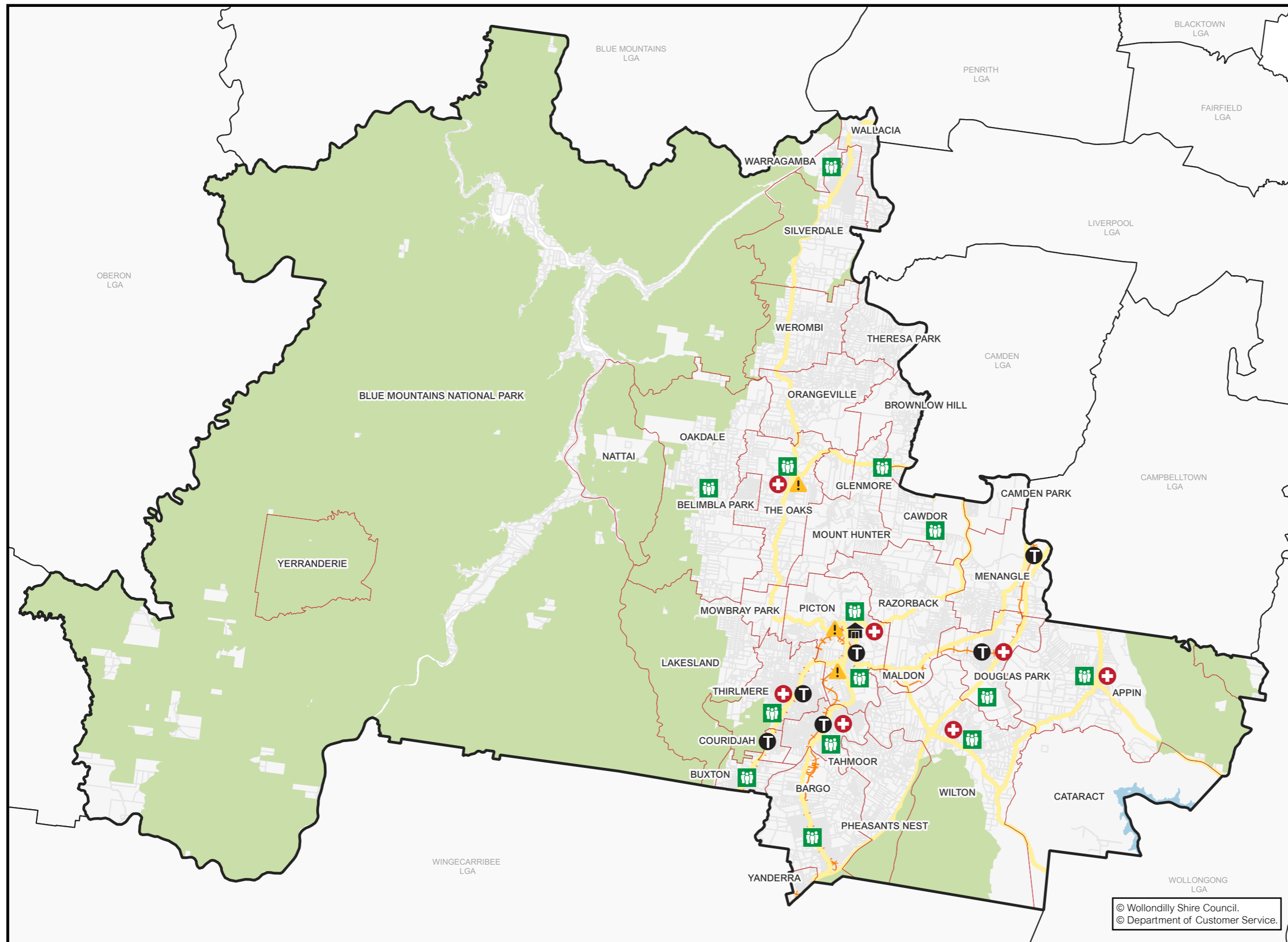


5,992
Born Overseas
(11.1%)



322
Non-English
Speaking (0.6%)

WOLLONDILLY SHIRE MAP



© Wollondilly Shire Council.
© Department of Customer Service.



EMERGENCY SERVICES	
Area	Information
Wollondilly	<p>Rural Fire Service - Bushfire Information Line - Ph: 1800 679 737</p> <p>Rural Fire Service Wollondilly District Office - Ph: (02) 4677 7000</p>
	<p>Wollondilly State Emergency Service (SES) 65 Bridge Street, Picton, 2571 Ph: 132 500 Fb: https://www.facebook.com/NSWSESWDY</p>
	<p>Picton Police Station 86 Argyle St, Picton NSW 2571 Ph: (02) 4677 8999</p>
	<p>The Oaks Police Station 57 Merlin St, The Oaks NSW 2570 Ph: (02) 4657 1142</p>
	<p>Picton Ambulance Station 79/81 Old Hume Hwy, Picton NSW 2571</p>
	<p>Camden PAC Office 278 Camden Valley Way NARELLAN 2567 Ph: (02) 4632 4499</p>
	<p>Warragamba Police Station 4 Third St, Warragamba NSW 2752 Ph: (02) 4774 1105</p>

COUNCIL ASSETS	
Area	Information
Wollondilly	<p>The Wollondilly Shire Hall 44-60 Menangle Street, Picton NSW 2571 Ph: (02) 4677 1100 E: council@wollondilly.nsw.gov.au</p>
	<p>Wollondilly Library 42 Menangle Street, Picton NSW 2571 Ph: (02) 4677 8300 E: library@wollondilly.nsw.gov.au Fb: https://www.facebook.com/WollondillyLibrary W: http://www.library.wollondilly.nsw.gov.au/home</p>
	<p>Wollondilly Shire Council Frank McKay Building, 62-64 Menangle Street, Picton NSW 2571 Ph: (02) 4677 1100 E: council@wollondilly.nsw.gov.au Fb: https://www.facebook.com/wollondilly W: https://www.wollondilly.nsw.gov.au</p>

PUBLIC TRANSPORT	
Area	Information
Wollondilly	Train Stations: Menangle Park Douglas Park Picton Thirlmere Tahmoor Bargo Yerrinbool

MEDICAL FACILITIES & PHARMACIES	
Area	Information
Wollondilly	Wollondilly Medical Centre Centre, Shop 16/117 Remembrance Driveway, Tahmoor NSW 2573 Ph: (02) 4607 2905 W: hotdoc.com.au Wollondilly Specialist Medical Centre Shop 15, Tahmoor Shopping Village (next to Foodworks), Cnr Remembrance Dr & Bronzewing St, Tahmoor NSW 2573 Ph: (02) 4683 0070 Thirlmere Pharmacy 29 Oak St, Thirlmere Ph: 4683 2866 Wilton Pharmacy 1 Greenbridge Drive, Wilton Ph: (02) 4630 9333 Priceline Pharmacy Tahmoor Shop 12 Tahmoor Town Centre, 117 Remembrance Driveway, Tahmoor NSW 2573 Ph: (02) 4681 8713 Picton Discount Drug Store Shop T25-T27/9 Margaret St, Picton NSW 2571 Ph: 4677 1294 Pharmacy 4 Less Tahmoor Tahmoor Shopping Village 5&6, 161-173 Remembrance Driveway, Tahmoor NSW 2573 Ph: (02) 4681 0224 The Oaks Village Pharmacy 67 John St, The Oaks NSW 2570 Ph: (02) 4657 1387 Appin Compounding Pharmacy Shop 2/75 Appin Rd, Appin NSW 2560 Ph: (02) 4631 1488 Douglas Park Pharmacy Shop 2A/147 Camden Rd, Douglas Park NSW 2569 Ph: (02) 4632 8554

NEIGHBOURHOOD SAFER SPACES	
Area	Information
Wollondilly	St Mary's Towers 415 Douglas Park Drive, Douglas Park Wilton Community Centre Broughton Street, Wilton Main Street Appin Appin Road, Appin Land adjacent to Bargo Hotel 225-227 Great Southern Road, Bargo Bargo Shops Remembrance Drive, Bargo Hall within Bargo Showground Radnor Road, Bargo Buxton Fire Shed West Parade, Buxton The Oaks Public School John Street, The Oaks The Oaks Hall Russell Street, The Oaks Warragamba Public School Hall Weir Road, Warragamba Oakdale Shops Burragorang Road, Oakdale Oakdale Community Hall Cnr Egans Road and Burragorang Road, Oakdale Mt Hunter Community Hall Corner of Burragorang Rd and Clyde Place, Mt Hunter Cawdor Public School 685 Cawdor Road, Cawdor Picton High School 480 Argyle Street, Picton Picton Bowling Club 55-56 Argyle Street, Picton Carpark between Coles & Council Admin Building Margaret Street, Picton Tahmoor Town Centre Carpark Cnr of Thirlmere Way and Remembrance Drive, Tahmoor Wollondilly Youth Hub/ Community Centre Harper Close, Tahmoor Thirlmere Public School Oaks Street, Thirlmere Thirlmere Memorial Park Oaks Street, Thirlmere

THIRLMERE & LAKESLAND

Thirlmere is a picturesque village, known for its stunning Thirlmere Lakes and the historic NSW Rail Museum. It hosts NSW's premier steam event, the 'Thirlmere Festival of Steam.' The tight-knit community takes pride in its sense of belonging and strong ties to heritage and natural features. Lakesland, which borders Thirlmere Lakes, boasts a thriving small country village atmosphere. Both Thirlmere and Lakesland share a robust volunteer connection with their local RFS brigades.

Information contained in this document is derived from Wollondilly Shire Council's Community Strengths and Resources Questionnaire 2023 and is a documentation of community thoughts and opinions. Statistical data is sourced from id.community and is supported by ABS Census data 2021. <https://profile.id.com.au/wollondilly/about?WebID=220>

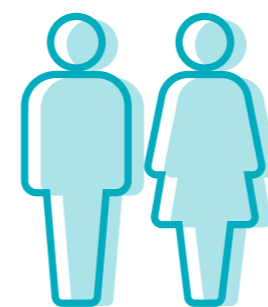


Population Data

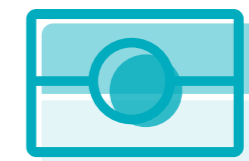
THIRLMERE | LAKESLAND



A population of
5,484 people
in total



2,670
Male (48.7%)
2,813
Female (51.3%)



213
Indigenous (3.9%)



818
Seniors (>70 Years)
(15%)

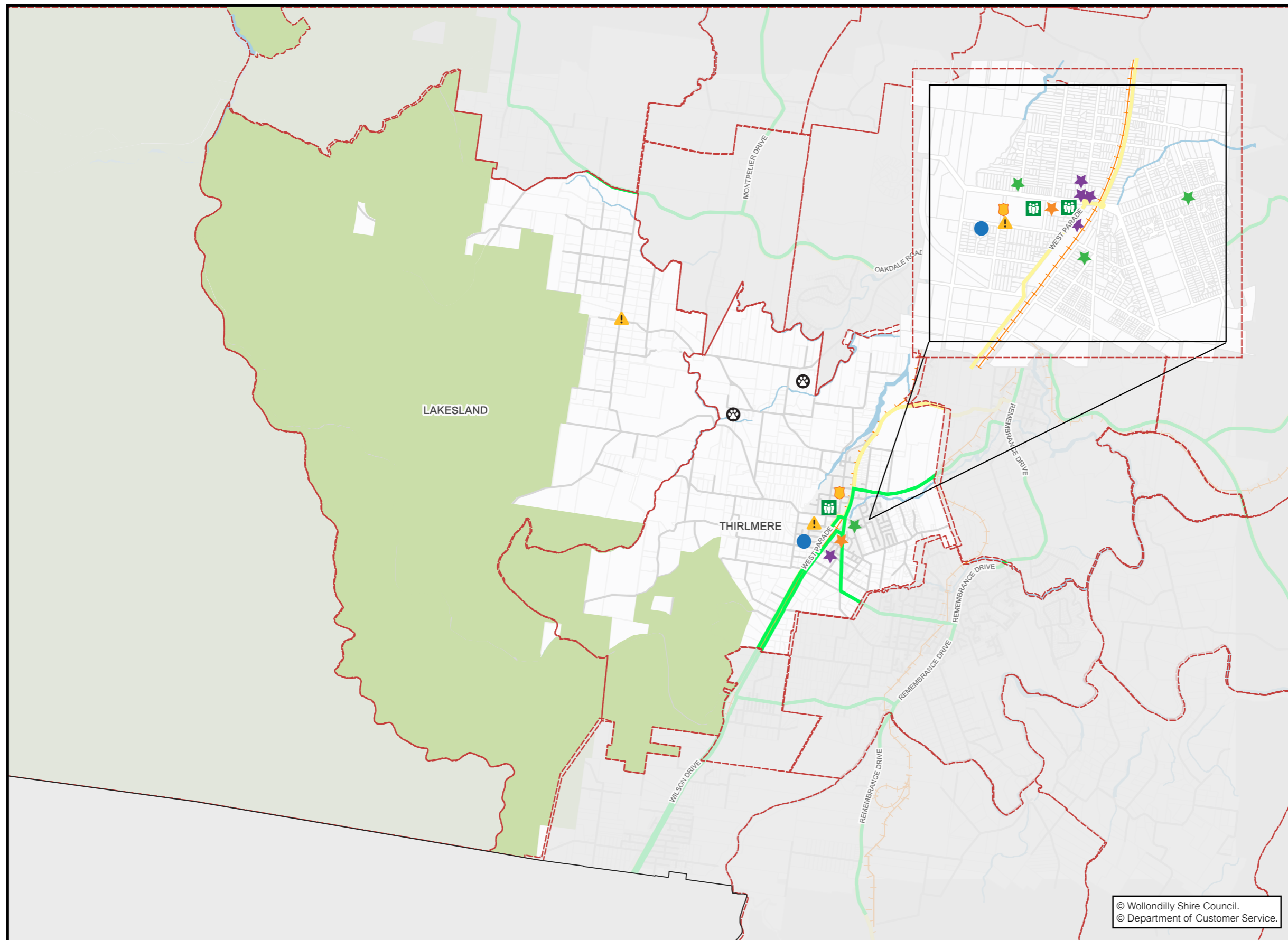


580
Born Overseas
(10.6%)



38
Non-English
Speaking
(0.7%)

AREA MAP



- Legend**
- Childcare Centres & Preschools
 - Community Associations
 - Council Assets
 - Disaster/Emergency Services
 - Private Animal Boarding Facilities
 - Prominent Businesses
 - Schools
 - Sports Associations
 - Evacuation Route
 - Neighbourhood Safer Spaces

© Wollondilly Shire Council.
© Department of Customer Service.

AREAS & INFORMATION

DISASTER SERVICES	
Area	Information
All Areas	<p>Rural Fire Service - Bushfire Information Line - Ph: 1800 679 737</p> <p>Rural Fire Service Wollondilly District Office - Ph: 4677 7000</p> <p>Wollondilly State Emergency Service (SES) 65 Bridge Street, Picton, 2571 Ph: 132 500 Fb: https://www.facebook.com/NSWSESWDY</p>
Thirlmere	<p>Thirlmere Rural Fire Brigade 21 Mason Street, Thirlmere NSW 2572 Ph: (02) 8741 5555 E: thirlmererfsbrigade@gmail.com Fb: https://www.facebook.com/thirlmererfs</p>
Lakesland	<p>Lakesland Rural Fire Brigade 225 Fergusson Road, Lakesland NSW 2572 Ph: (02) 4734 7777 (District Office) E: captain@lakesland.rfsa.org.au/ or secretary@lakesland.rfsa.org.au Fb: https://www.facebook.com/LakeslandRFS</p>

SCHOOLS	
Area	Information
Thirlmere	<p>Thirlmere Public School Oaks Road, Thirlmere NSW 2572 Ph: (02) 4681 8476 E: thirlmere-p.school@det.nsw.edu.au</p>
Lakesland	NIL

CHILDCARE SERVICES & PRESCHOOLS	
Area	Information
Thirlmere	<p>Step Ahead Kids Early Learning Centre 59 Oaks Street, Thirlmere NSW 2572 Ph: (02) 4681 9901 E: stepaheadkids@hotmail.com Fb: https://www.facebook.com/StepAheadKidsEarlyLearningCentre W: https://stepaheadkids.com.au</p> <p>Thirlmere Education and Care 40 Rita Street, Thirlmere NSW 2572 Ph: (02) 4683 3300 E: thirlmere@educationandcare.org Fb: https://www.facebook.com/thirlmereeducationandcare W: https://educationandcare.org</p> <p>Thirlmere Pegasus Early Education Centre 6 Antill Street, Thirlmere NSW 2572 Ph: (02) 4683 0333 E: pegasuseec@bordnet.com.au Fb: https://www.facebook.com/thirlmerepegasus W: https://thirlmerepegasus.com.au</p>
Lakesland	NIL

SPORTS ASSOCIATIONS	
Area	Information
Thirlmere	<p>Thirlmere Tahmoor SRLFC Thirlmere Sports Ground, 22 - 42 Oaks Street Thirlmere NSW 2572 Fb: https://www.facebook.com/people/Thirlmere-Tahmoor-SRLFC/100063654695142/</p> <p>Thirlmere Tahmoor JRL Thirlmere Sports Ground, 22-42 Oaks Street Thirlmere NSW 2572 E: thirlmereroosters@gmail.com Fb: https://www.facebook.com/TTJRL/</p> <p>Thirlmere Netball Club Tahmoor Sports Ground, 140 Thirlmere Way, Tahmoor NSW 2573 Ph: 0421 714 246 E: peta.paget@optusnet.com.au Fb: https://www.facebook.com/groups/102772336537299</p>
Lakesland	NIL

COMMUNITY ASSOCIATIONS	
Area	Information
Thirlmere	<p>Wollondilly Arts Group W: http://www.wollondillyartsgroup.com.au Fb: https://www.facebook.com/groups/WollondillyArtsGroup</p> <p>Scouts NSW (Thirlmere) Southern Highland Rover Crew Scout Hall, 30 Mason Street, Thirlmere NSW 2572 W: https://nsw.scouts.com.au</p>
Lakesland	NIL

PROMINENT BUSINESSES	
Area	Information
Thirlmere	<p>Australia Post – Thirlmere LPO Shop 1/ 13 Oaks Street, Thirlmere NSW 2572 Ph: (02) 4681 8490</p> <p>IGA Thirlmere Lot 110 Westbourne Avenue, Thirlmere NSW 2572 Ph: (02) 4683 1902</p> <p>NSW Rail Museum 10 Barbour Road, Thirlmere NSW 2573 Ph: 1300 1155 99 Fb: https://www.facebook.com/NSWRailMuseum W: https://www.nswrailmuseum.com.au</p> <p>Welcome Inn Hotel 9 Oaks Road, Thirlmere NSW 2572 Ph: (02) 4681 8401 E: info@welcomeinnhotel.com.au Fb: https://www.facebook.com/welcomeinnhotelthirlmere W: https://www.welcomeinnhotel.com.au</p>
Lakesland	NIL

PRIVATE ANIMAL BOARDING FACILITIES	
Area	Information
Thirlmere	<p>Oaks Hill Arabians Oaks Road, Thirlmere NSW 2572 Ph: 0451 042 164 E: enquiries@oakshillarabians.com Fb: https://www.facebook.com/oakshillarabians/</p> <p>Cedar Rose Agistment & Training 289 Mullhollands Road, Thirlmere NSW 2572 Ph: 0420 563 408</p>
Lakesland	NIL

NEIGHBOURHOOD SAFER SPACES	
Area	Information
Thirlmere	<p>Thirlmere Public School Oaks Street, Thirlmere</p> <p>Thirlmere Memorial Park Oaks Street, Thirlmere</p>
Lakesland	NIL

COUNCIL ASSETS	
Area	Information
Thirlmere	NIL
Lakesland	NIL



Steam Train, Thirlmere Festival Of Steam 2023

ONLINE FACEBOOK COMMUNITY FORUMS & PAGES

Area	Information	
All Areas	<p>Macarthur-Wollondilly Community Noticeboard Fb: https://www.facebook.com/groups/1653921468167893/</p> <p>Mayor Matt Gould Fb: https://www.facebook.com/CrMattGould</p> <p>Picton, Camden and surrounding suburbs Community Page Fb: https://www.facebook.com/groups/861602960581170</p> <p>Picton Wollondilly and Macarthur Community Noticeboard Fb: https://www.facebook.com/groups/745054278934576/</p> <p>What's Happening in Wollondilly Fb: https://www.facebook.com/groups/2853710421546044/</p> <p>Wollondilly Living Fb: https://www.facebook.com/groups/wollondillyliving/about/</p> <p>Wollondilly Community Living Fb: https://www.facebook.com/groups/973623299396093/</p> <p>Wollondilly Incidents & Alerts Fb: https://www.facebook.com/groups/wollondilly/</p> <p>Wollondilly Community Noticeboard Fb: https://www.facebook.com/groups/945217202158492/</p> <p>Wollondilly Life Fb: https://www.facebook.com/groups/200220494140376/</p> <p>Wollondilly Shire Council Fb: https://www.facebook.com/wollondilly</p>	
	Thirlmere	<p>Thirlmere Community Fb: https://www.facebook.com/Thirlmere-348532927897</p> <p>Thirlmere Picton Community Group Fb: https://www.facebook.com/groups/575604505898058</p>
		Lakesland





Wollondilly
Shire Council

www.wollondilly.nsw.gov.au