

MONTHLY STAKEHOLDER COMMUNICATION

February 2024

Wollondilly Performing Arts Centre
Wollondilly Shire Council



Belmadar



Upcoming Works

- **Site Shed Relocation**
- **Excavation Works** – Excavation of Bin Store Area
- **Concrete** - Form, Reinforce and Pour Bin Store Area, Foyer Upstand Wall, Fire Booster Lid and Planter Walls
- **Façade** – Commence Raico Windows and Shingle Cladding
- **Lift** – Delivery of Lift
- **Mechanical Services:**
 - Level 1 – Continue Diffusers in Back of House Area
 - Level 2 – Continue Refrigerant Works
 - Theatre Space – Complete Hard-Ducting
 - Plant Deck – Continue Pipework and Ducting
- **Electrical Services:**
 - Continue Security Cabling
 - Continue with Submains
 - Commence external in-grounds work – Northern Section of Site
 - Continue AV and Comms Rough-In
 - Complete Majority of High Level Rough-in
 - Complete Level 1 Electrical In-Ground Works and Cabling in Preparation for Shut-down
 - Commence Installation of Solar Panels
- **Hydraulic Works:**
 - Continue Syfon Drainage Install
 - Complete Services Extension Works and Commence External Civil Works
- **Fire Services**
 - Continue Dry and Wet Fire Rough-in
- **Roofing** – Complete Foyer Roof
- **Gyprock**
 - Continue Sheeting and Framing Walls and Ceilings
 - Continue CFC Sheeting Works and Commence Ortech Ceiling
- **Acoustic Doors** – Supply and Install of Ofinac Acoustic Doors
- **Masonry** – Fire Booster Planter Wall and Bin Store
- **Waterproofing, Mortar Beds & Tiling:**
 - Complete Wet Area Waterproofing and Flood testing
 - Complete Mortar Beds
 - Commence Tiling to Male & Female bathrooms

Completed Works

- **Masonry** – Fire Booster Blockwork and Northern Façade Blockwork
- **Render** – Render Blockwork to Driveway
- **Windows** – Northern Façade and Driveway Windows
- **Structural Steel:**
 - Foyer Structural Steelwork
 - Ofinac Acoustic Sliding Door Steel Install
- **Fire Spray** – Complete Remaining Fire-Spray
- **Pre-cast Panels** – Complete Caulking Works
- **Mechanical Services:**
 - Level 1 – Complete Flexi's, Install balance of Dampers and Finalise BMS Cabling
 - Level 2 – Continue Duct Install and Refrigerant Works
 - Theatre Space & Plant Deck – Continue Duct Install
- **Electrical Services:**
 - Complete Security Cabling
 - Continue Submains
 - Continue AV and Comm's Cabling
 - Theatre – High Level Cabling Works
 - Level 1 Electrical – Commence Trenching Works
- **Hydraulic Works:**
 - Continue Syon Works
 - Complete Services Extension Works and Complete Connection to Colden St Pit
- **Fire Services** – Continue Dry and Wet Fire Rough-in
- **Kitchen** – Install Kitchen Exhaust Hood and Cool-room Paneling and Slab
- **Roofing:**
 - Finish Low-Level Roof Sheeting
 - Foyer Roof Safety Mesh
 - Commence Northern Low-level Roof
- **Gyprock**
 - Continue Sheeting and Framing Ceilings and Walls
 - Continue External Cladding Install
- **Feature Stairs** – Curved Stair 3D Modelled in Preparation for Fabrication

Progress Photos

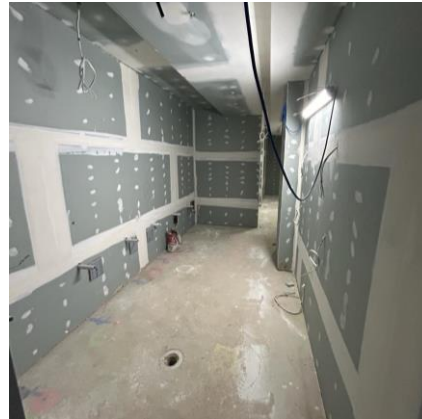
Wollondilly Performing Arts Centre
Wollondilly Shire Council



Northern Elevation with Blockwork and Façade Cladding, Theatre Space Services, Windows, Plant Deck Mechanical and Northern Lower Roof

Progress Photos

Wollondilly Performing Arts Centre
Wollondilly Shire Council



Cool-room, Loading Dock and Services, Wall and Ceiling Sheetting, Foyer
Structural Steel Install

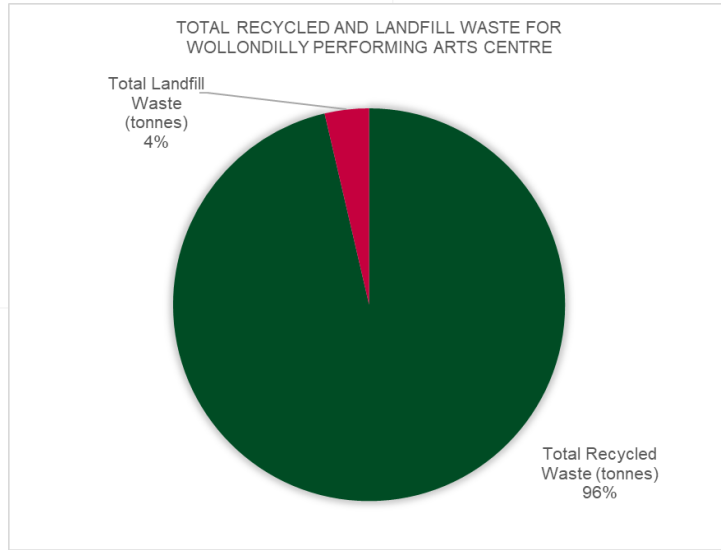
Progress Photos

Wollondilly Performing Arts Centre
Wollondilly Shire Council

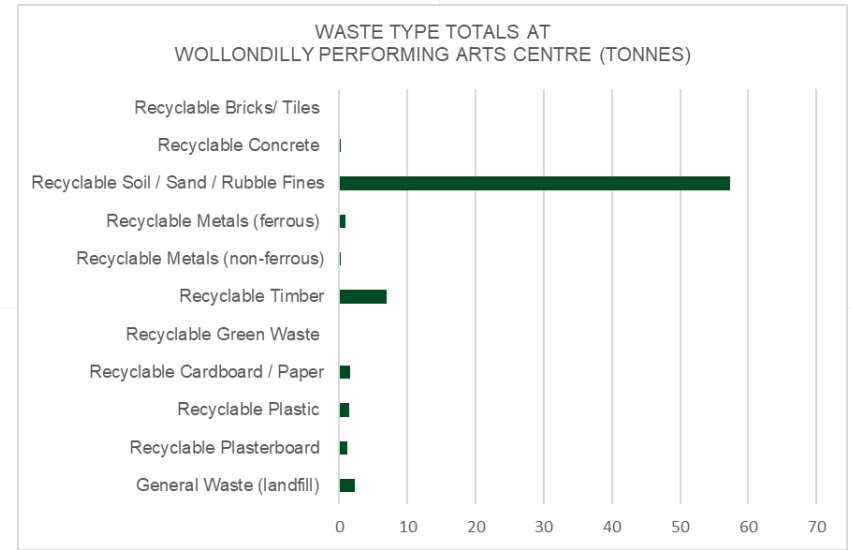


Menangle Street Elevation at Conclusion of February 2024.

Environmental Waste Data



Total recycled (96%) and Landfill Waste (4%), in tonnes, for the month of January 2024 at Wollondilly Performing Arts Centre



Breakdown of the waste type totals (tonnes) for the month of January 2024 at Wollondilly Performing Arts Centre