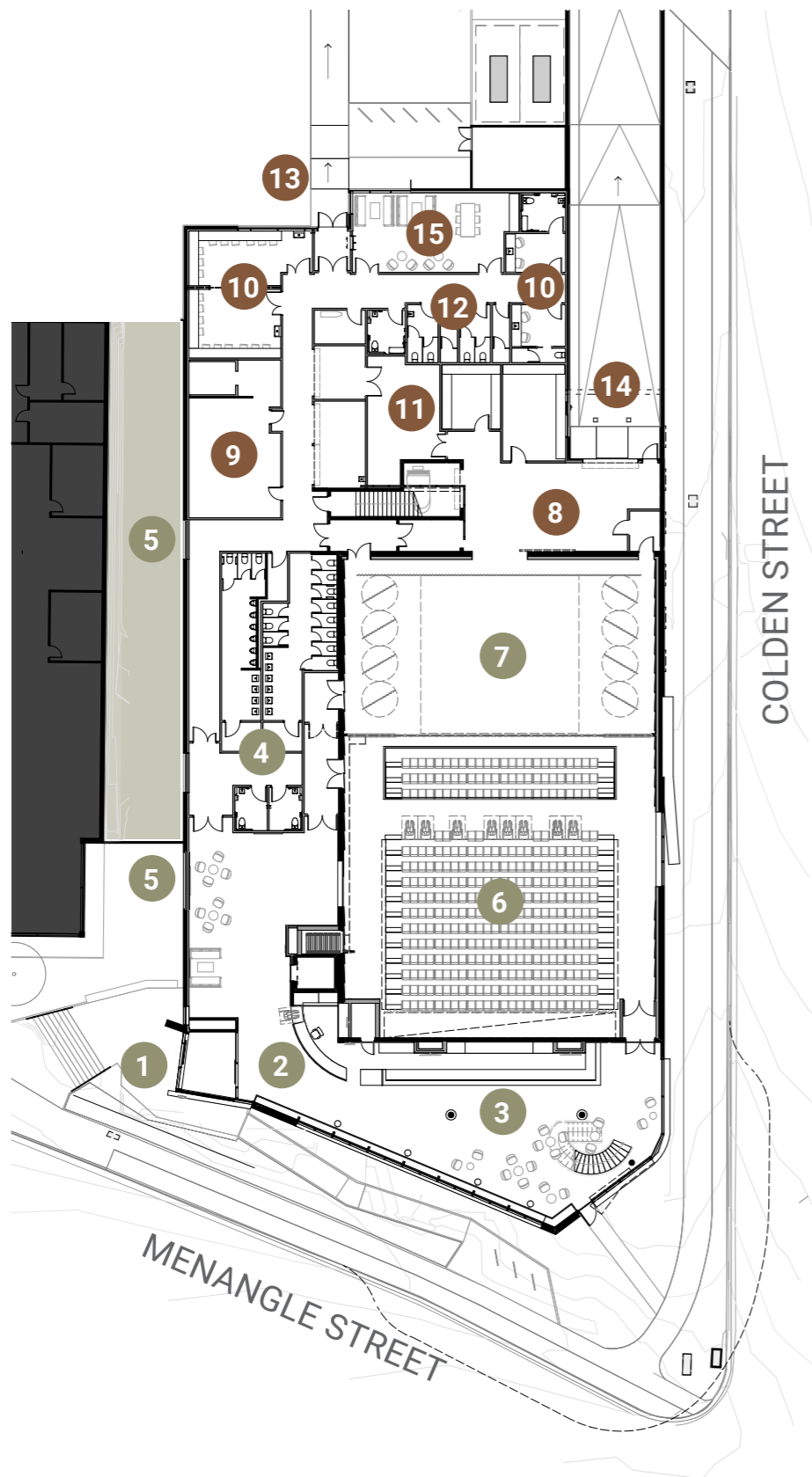


Ground Floor (L1)



Front of House

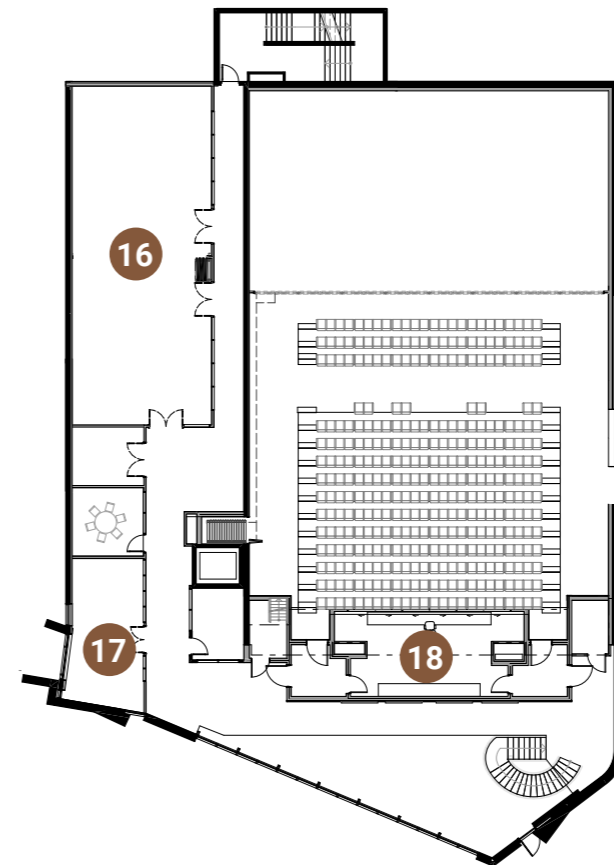
- 1 Forecourt and Entry
- 2 Box Office and Foyer
- 3 Bar
- 4 Patron amenities
- 5 Connection to future Library
- 6 Theatre / Function Space
- 7 Stage

Back of House

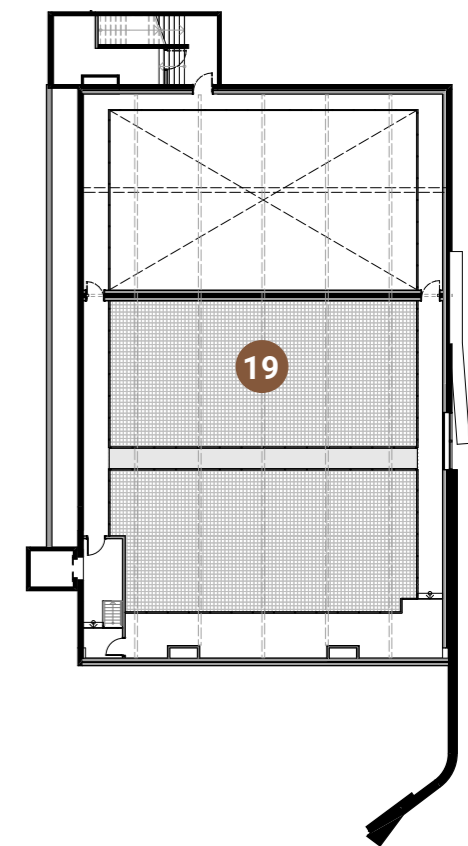
- 8 Scene Dock
- 9 Function Kitchen
- 10 Dressing Rooms
- 11 Stores
- 12 BOH amenities
- 13 Stage Door
- 14 Loading Dock
- 15 Green Room
- 16 Rehearsal / Meeting Room
- 17 Administration / Offices
- 18 Control Room
- 19 Tension Wire Grid



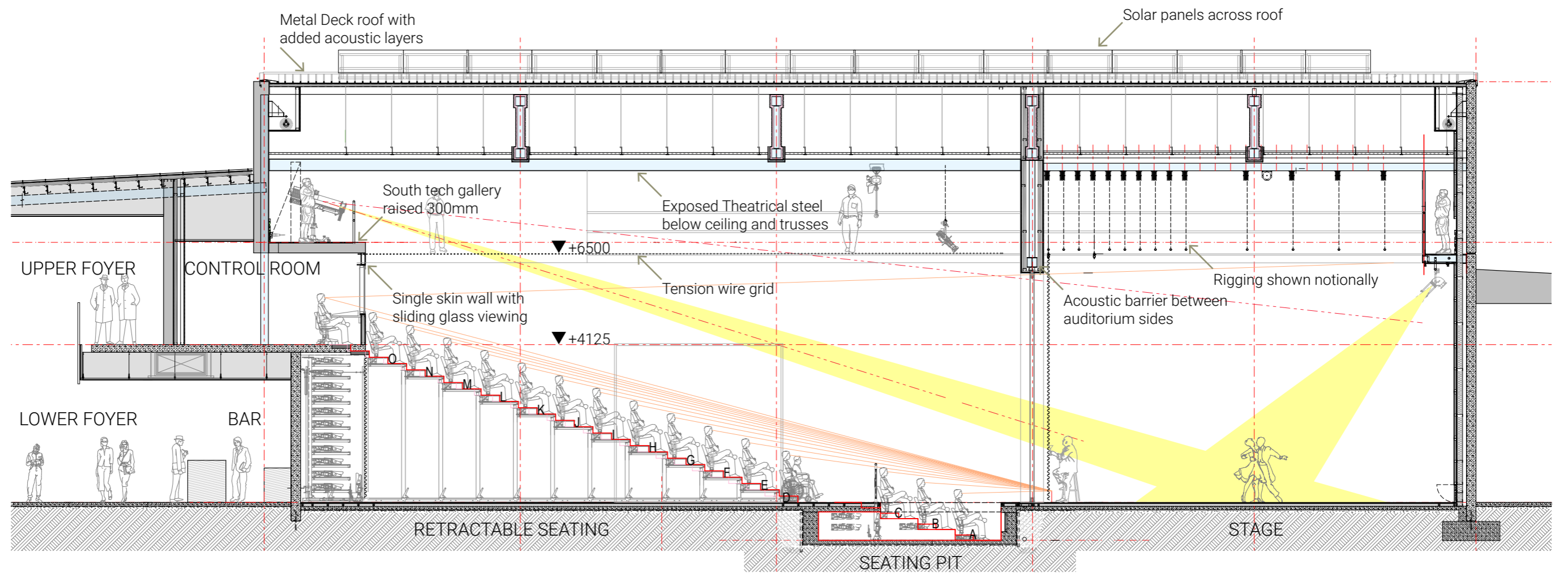
First Floor (L2)



Theatre Technical Gallery (L3)

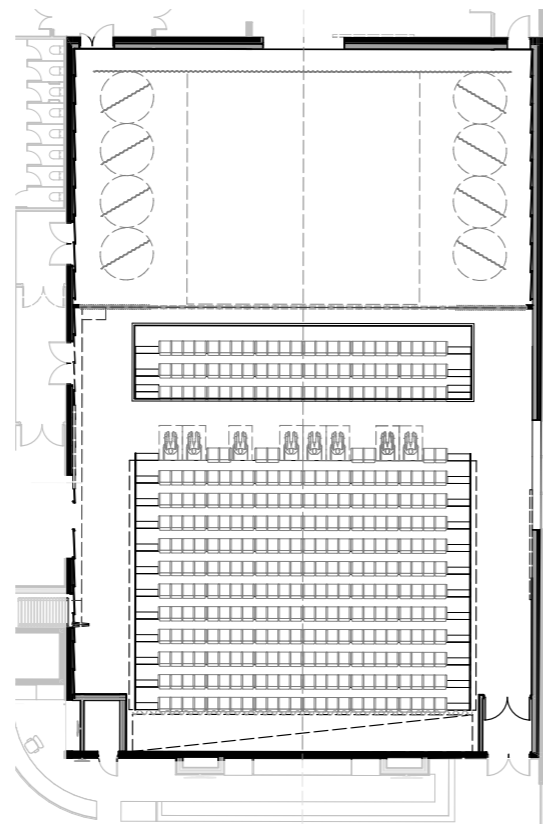


THEATRE DESIGN



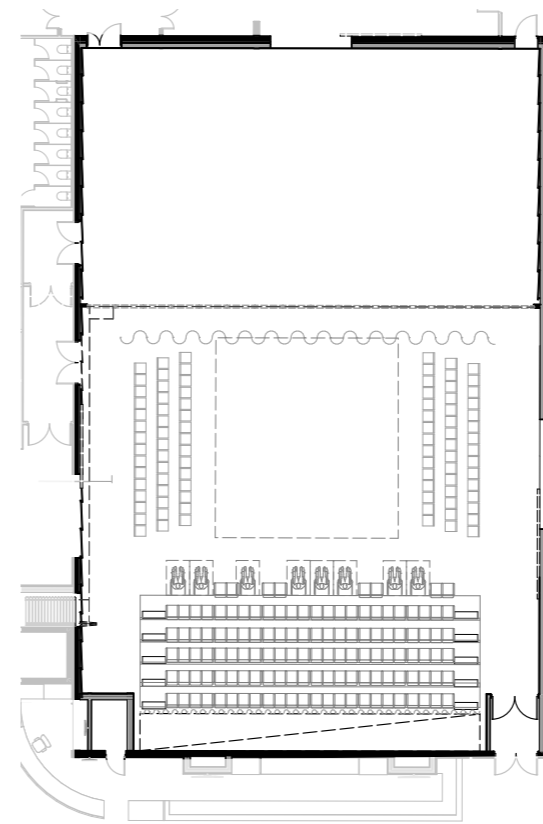
Theatre - 'End-on'

352 seats including 8 wheelchair positions



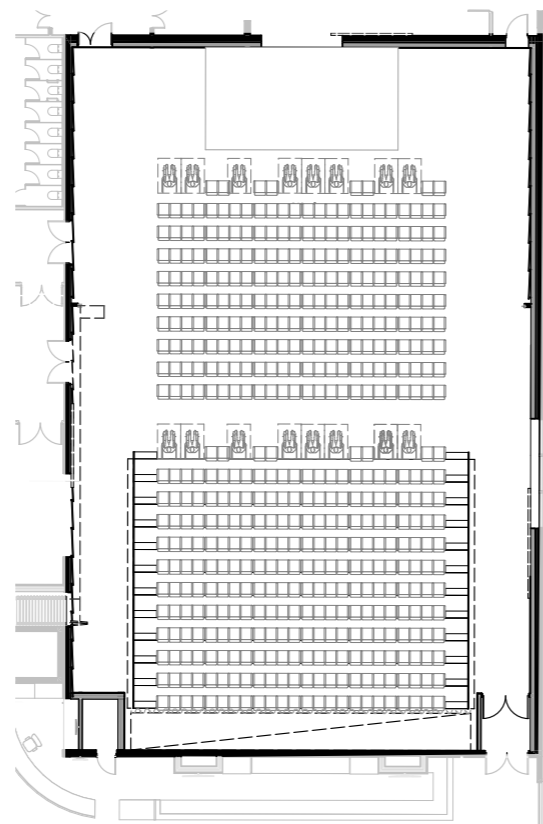
Theatre - 'In-the-Round'

226 seats including 8 wheelchair positions



Music Concert / Comedy

512 seats including 16 wheelchair positions



Dinner Dance

320 seats at tables of 10

